

ARG58414
anti-SLC31A1 / CTR1 antibodyPackage: 100 µl
Store at: -20°C

Summary

Product Description	Rabbit Polyclonal antibody recognizes SLC31A1 / CTR1
Tested Reactivity	Hu, Ms
Tested Application	WB
Host	Rabbit
Clonality	Polyclonal
Isotype	IgG
Target Name	SLC31A1 / CTR1
Species	Human
Immunogen	Recombinant fusion protein corresponding to aa. 1-60 of Human SLC31A1 / CTR1 (NP_001850.1).
Conjugation	Un-conjugated
Alternate Names	COPT1; hCTR1; Solute carrier family 31 member 1; High affinity copper uptake protein 1; Copper transporter 1; CTR1

Application Instructions

Application table	Application	Dilution
	WB	1:500 - 1:2000
Application Note	* The dilutions indicate recommended starting dilutions and the optimal dilutions or concentrations should be determined by the scientist.	
Positive Control	H460	
Observed Size	30 kDa	

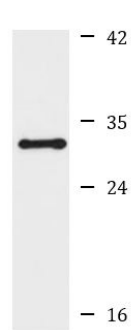
Properties

Form	Liquid
Purification	Affinity purified.
Buffer	PBS (pH 7.3), 0.02% Sodium azide and 50% Glycerol.
Preservative	0.02% Sodium azide
Stabilizer	50% Glycerol
Storage instruction	For continuous use, store undiluted antibody at 2-8°C for up to a week. For long-term storage, aliquot and store at -20°C. Storage in frost free freezers is not recommended. Avoid repeated freeze/thaw cycles. Suggest spin the vial prior to opening. The antibody solution should be gently mixed before use.
Note	For laboratory research only, not for drug, diagnostic or other use.

Bioinformation

Gene Symbol	SLC31A1
Gene Full Name	solute carrier family 31 (copper transporter), member 1
Background	The protein encoded by this gene is a high-affinity copper transporter found in the cell membrane. The encoded protein functions as a homotrimer to effect the uptake of dietary copper. [provided by RefSeq, Aug 2011]
Function	High-affinity, saturable copper transporter involved in dietary copper uptake. [UniProt]
Calculated Mw	21 kDa
PTM	O-Glycosylation at Thr-27 protects from proteolytic cleavage in the N-terminal extracellular domain. [UniProt]
Cellular Localization	Cell membrane, Multi-pass membrane protein. [UniProt]

Images



H460

ARG58414 anti-SLC31A1 / CTR1 antibody WB image

Western blot: 25 µg of H460 cell lysate stained with ARG58414 anti-SLC31A1 / CTR1 antibody at 1:1000 dilution.