

ARG58419 anti-CDw198 / CCR8 antibody

Package: 100 µl
Store at: -20°C

Summary

Product Description	Rabbit Polyclonal antibody recognizes CDw198 / CCR8
Tested Reactivity	Hu
Tested Application	FACS, WB
Host	Rabbit
Clonality	Polyclonal
Isotype	IgG
Target Name	CDw198 / CCR8
Species	Human
Immunogen	KLH-conjugated synthetic peptide corresponding to aa. 290-317 (C-terminus) of Human CCR8.
Conjugation	Un-conjugated
Alternate Names	GPR-CY6; CKRL1; CY6; CCR-8; CD antigen CDw198; CKR-L1; CC chemokine receptor CHEMR1; Chemokine receptor-like 1; CMKBRL2; C-C chemokine receptor type 8; CDw198; CC-CKR-8; C-C CKR-8; CMKBR8; TER1; GPRCY6

Application Instructions

Application table	Application	Dilution
	FACS	1:10 - 1:50
	WB	1:1000
Application Note	* The dilutions indicate recommended starting dilutions and the optimal dilutions or concentrations should be determined by the scientist.	
Positive Control	MDA-MB-435	

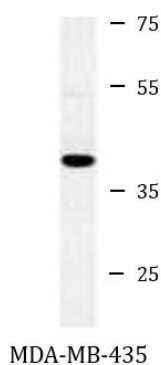
Properties

Form	Liquid
Purification	Purification with Protein A and immunogen peptide.
Buffer	PBS and 0.09% (W/V) Sodium azide.
Preservative	0.09% (W/V) Sodium azide.
Storage instruction	For continuous use, store undiluted antibody at 2-8°C for up to a week. For long-term storage, aliquot and store at -20°C or below. Storage in frost free freezers is not recommended. Avoid repeated freeze/thaw cycles. Suggest spin the vial prior to opening. The antibody solution should be gently mixed before use.
Note	For laboratory research only, not for drug, diagnostic or other use.

Bioinformation

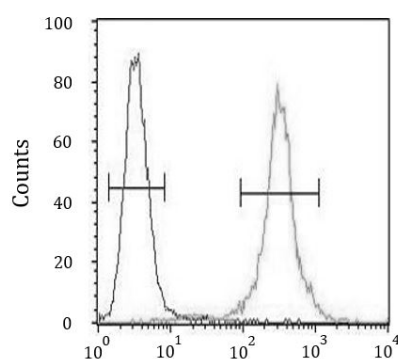
Gene Symbol	CCR8
Gene Full Name	chemokine (C-C motif) receptor 8
Background	This gene encodes a member of the beta chemokine receptor family, which is predicted to be a seven transmembrane protein similar to G protein-coupled receptors. Chemokines and their receptors are important for the migration of various cell types into the inflammatory sites. This receptor protein preferentially expresses in the thymus. I-309, thymus activation-regulated cytokine (TARC) and macrophage inflammatory protein-1 beta (MIP-1 beta) have been identified as ligands of this receptor. Studies of this receptor and its ligands suggested its role in regulation of monocyte chemotaxis and thymic cell apoptosis. More specifically, this receptor may contribute to the proper positioning of activated T cells within the antigenic challenge sites and specialized areas of lymphoid tissues. This gene is located at the chemokine receptor gene cluster region. [provided by RefSeq, Jul 2008]
Function	Receptor for the chemokine CCL1/SCYA1/I-309. May regulate monocyte chemotaxis and thymic cell line apoptosis. Alternative coreceptor with CD4 for HIV-1 infection. [UniProt]
Calculated Mw	41 kDa
Cellular Localization	Cell membrane; Multi-pass membrane protein. [UniProt]

Images



ARG58419 anti-CDw198 / CCR8 antibody WB image

Western blot: 35 µg of MDA-MB-435 cell lysate stained with ARG58419 anti-CDw198 / CCR8 antibody.



ARG58419 anti-CDw198 / CCR8 antibody FACS image

Flow Cytometry: MDA-MB-435 cells stained with ARG58419 anti-CDw198 / CCR8 antibody (right histogram) or without primary antibody as control (left histogram), followed by incubation with FITC labelled secondary antibody.