

## ARG58426 anti-CKS2 antibody

Package: 100 µl  
Store at: -20°C

### Summary

Product Description	Rabbit Polyclonal antibody recognizes CKS2
Tested Reactivity	Hu
Tested Application	FACS, WB
Host	Rabbit
Clonality	Polyclonal
Isotype	IgG
Target Name	CKS2
Species	Human
Immunogen	KLH-conjugated synthetic peptide corresponding to aa. 43-77 of Human CKS2.
Conjugation	Un-conjugated
Alternate Names	CKS-2; Cyclin-dependent kinases regulatory subunit 2; CKSHS2

### Application Instructions

Application table	Application	Dilution
	FACS	1:25
	WB	1:2000
Application Note	* The dilutions indicate recommended starting dilutions and the optimal dilutions or concentrations should be determined by the scientist.	
Positive Control	SH-SY5Y	

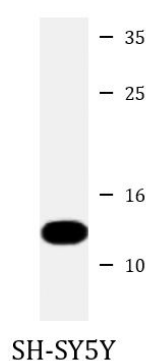
### Properties

Form	Liquid
Purification	Purification with Protein A and immunogen peptide.
Buffer	PBS and 0.09% (W/V) Sodium azide.
Preservative	0.09% (W/V) Sodium azide
Storage instruction	For continuous use, store undiluted antibody at 2-8°C for up to a week. For long-term storage, aliquot and store at -20°C or below. Storage in frost free freezers is not recommended. Avoid repeated freeze/thaw cycles. Suggest spin the vial prior to opening. The antibody solution should be gently mixed before use.
Note	For laboratory research only, not for drug, diagnostic or other use.

### Bioinformation

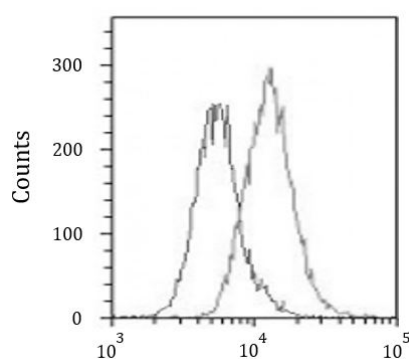
Gene Symbol	CKS2
Gene Full Name	CDC28 protein kinase regulatory subunit 2
Background	CKS2 protein binds to the catalytic subunit of the cyclin dependent kinases and is essential for their biological function. The CKS2 mRNA is found to be expressed in different patterns through the cell cycle in HeLa cells, which reflects specialized role for the encoded protein. [provided by RefSeq, Jul 2008]
Function	Binds to the catalytic subunit of the cyclin dependent kinases and is essential for their biological function. [UniProt]
Calculated Mw	10 kDa

## Images



ARG58426 anti-CKS2 antibody WB image

Western blot: 20 µg of SH-SY5Y cell lysate stained with ARG58426 anti-CKS2 antibody at 1:2000 dilution.



ARG58426 anti-CKS2 antibody FACS image

Flow Cytometry: A549 cells were fixed with 2% paraformaldehyde (10 min) and then permeabilized with 90% methanol for 10 min. The cells were then incubated in 2% BSA to block non-specific protein-protein interactions and stained with ARG58426 anti-CKS2 antibody (right histogram) at 1:25 dilution for 60 min at 37°C, followed by incubation with DyLight® 488 labelled secondary antibody. Isotype control antibody (left histogram) was Rabbit IgG1 (1 µg/10<sup>6</sup> cells) used under the same conditions. Acquisition of >10000 events was performed.