

ARG58427
anti-CORD2 antibody

Package: 50 µg

Store at: -20°C

Summary

| | |
|---------------------|--|
| Product Description | Rabbit Polyclonal antibody recognizes CORD2 |
| Tested Reactivity | Hu |
| Tested Application | WB |
| Host | Rabbit |
| Clonality | Polyclonal |
| Isotype | IgG |
| Target Name | CORD2 |
| Species | Human |
| Immunogen | Synthetic peptide corresponding to a sequence at the C-terminus of Human CORD2 (265-299aa DSLEFKDPTGTWKFTYNPMDPLDYKDQSAWKQIL), identical to the related Mouse and Rat sequences. |
| Conjugation | Un-conjugated |
| Alternate Names | CORD2; Cone-rod homeobox protein; OTX3; CRD; LCA7 |

Application Instructions

| | | |
|-------------------|--|-----------------|
| Application table | Application | Dilution |
| | WB | 0.1 - 0.5 µg/ml |
| Application Note | * The dilutions indicate recommended starting dilutions and the optimal dilutions or concentrations should be determined by the scientist. | |

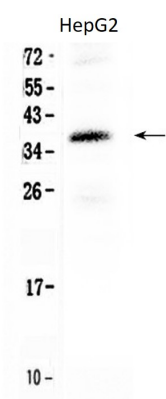
Properties

| | |
|---------------------|--|
| Form | Liquid |
| Purification | Affinity purification with immunogen. |
| Buffer | 0.9% NaCl, 0.2% Na ₂ HPO ₄ , 0.05% Sodium azide and 5% BSA. |
| Preservative | 0.05% Sodium azide |
| Stabilizer | 5% BSA |
| Concentration | 0.5 mg/ml |
| Storage instruction | For continuous use, store undiluted antibody at 2-8°C for up to a week. For long-term storage, aliquot and store at -20°C or below. Storage in frost free freezers is not recommended. Avoid repeated freeze/thaw cycles. Suggest spin the vial prior to opening. The antibody solution should be gently mixed before use. |
| Note | For laboratory research only, not for drug, diagnostic or other use. |

Bioinformation

| | |
|-----------------------|--|
| Gene Symbol | CRX |
| Gene Full Name | cone-rod homeobox |
| Background | The protein encoded by this gene is a photoreceptor-specific transcription factor which plays a role in the differentiation of photoreceptor cells. This homeodomain protein is necessary for the maintenance of normal cone and rod function. Mutations in this gene are associated with photoreceptor degeneration, Leber congenital amaurosis type III and the autosomal dominant cone-rod dystrophy 2. Several alternatively spliced transcript variants of this gene have been described, but the full-length nature of some variants has not been determined. [provided by RefSeq, Jul 2008] |
| Function | Transcription factor that binds and transactivates the sequence 5'-TAATC[CA]-3' which is found upstream of several photoreceptor-specific genes, including the opsin genes. Acts synergistically with other transcription factors, such as NRL, RORB and RAX, to regulate photoreceptor cell-specific gene transcription. Essential for the maintenance of mammalian photoreceptors. [UniProt] |
| Calculated Mw | 32 kDa |
| Cellular Localization | Nucleus. [UniProt] |

Images



ARG58427 anti-CORD2 antibody WB image

Western blot: 50 µg of sample under reducing conditions. HepG2 whole cell lysate stained with ARG58427 anti-CORD2 antibody at 0.5 µg/ml, overnight at 4°C.