

ARG58428 anti-CHRNA5 antibody

Package: 50 µg
Store at: -20°C

Summary

Product Description	Rabbit Polyclonal antibody recognizes CHRNA5
Tested Reactivity	Hu, Ms, Rat
Tested Application	FACS, IHC-P, WB
Host	Rabbit
Clonality	Polyclonal
Isotype	IgG
Target Name	CHRNA5
Species	Human
Immunogen	Synthetic peptide corresponding to a sequence at the N-terminus of Human CHRNA5 (44-76aa AKHEDSLKDLFQDYERWVRPVEHLNDKIKIKF), different from the related Mouse sequence by five amino acids, and from the related Rat sequence by four amino acids.
Conjugation	Un-conjugated
Alternate Names	LNCR2; Neuronal acetylcholine receptor subunit alpha-5

Application Instructions

Application table	Application	Dilution
	FACS	1 - 3 µg/10 ⁶ cells
	IHC-P	0.5 - 1 µg/ml
	WB	0.1 - 0.5 µg/ml
Application Note	IHC-P: Antigen Retrieval: Heat mediated was performed in Citrate buffer (pH 6.0) for 20 min. * The dilutions indicate recommended starting dilutions and the optimal dilutions or concentrations should be determined by the scientist.	

Properties

Form	Liquid
Purification	Affinity purification with immunogen.
Buffer	0.9% NaCl, 0.2% Na ₂ HPO ₄ , 0.05% Sodium azide and 5% BSA.
Preservative	0.05% Sodium azide
Stabilizer	5% BSA
Concentration	0.5 mg/ml
Storage instruction	For continuous use, store undiluted antibody at 2-8°C for up to a week. For long-term storage, aliquot and store at -20°C or below. Storage in frost free freezers is not recommended. Avoid repeated freeze/thaw cycles. Suggest spin the vial prior to opening. The antibody solution should be gently mixed

before use.

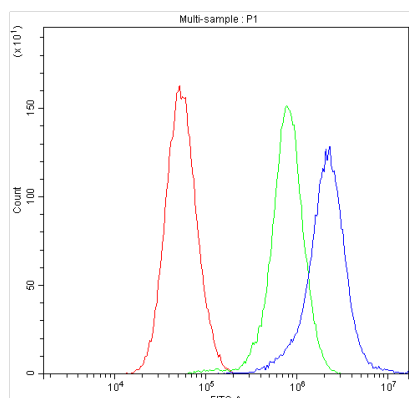
Note

For laboratory research only, not for drug, diagnostic or other use.

Bioinformation

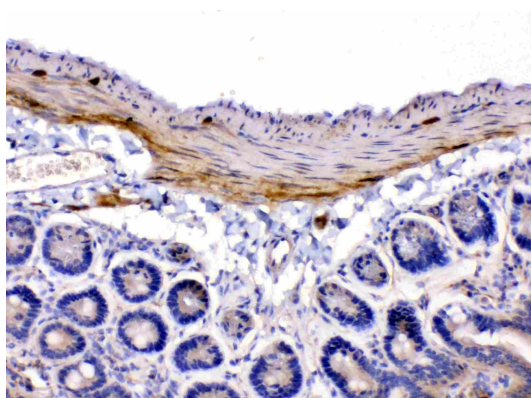
Gene Symbol	CHRNA5
Gene Full Name	cholinergic receptor, nicotinic, alpha 5 (neuronal)
Background	The protein encoded by this gene is a nicotinic acetylcholine receptor subunit and a member of a superfamily of ligand-gated ion channels that mediate fast signal transmission at synapses. These receptors are thought to be heteropentamers composed of separate but similar subunits. Defects in this gene have been linked to susceptibility to lung cancer type 2 (LNCr2).[provided by RefSeq, Jun 2010]
Function	After binding acetylcholine, the AChR responds by an extensive change in conformation that affects all subunits and leads to opening of an ion-conducting channel across the plasma membrane. [UniProt]
Calculated Mw	53 kDa
Cellular Localization	Cell junction, synapse, postsynaptic cell membrane; Multi-pass membrane protein. Cell membrane; Multi-pass membrane protein. [UniProt]

Images



ARG58428 anti-CHRNA5 antibody FACS image

Flow Cytometry: U251 cells were blocked with 10% normal goat serum, and then stained with ARG58428 anti-CHRNA5 antibody (blue) at 1 µg/10⁶ cells for 30 min at 20°C, followed by DyLight®488 labelled secondary antibody. Isotype control antibody (green) was rabbit IgG (1 µg/10⁶ cells) used under the same conditions. Unlabelled sample (red) was also used as a control.

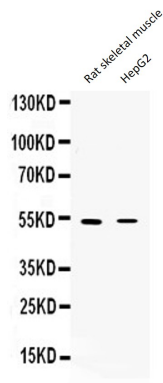


ARG58428 anti-CHRNA5 antibody IHC-P image

Immunohistochemistry: Paraffin-embedded Mouse intestine tissue. Antigen Retrieval: Heat mediated was performed in Citrate buffer (pH 6.0, epitope retrieval solution) for 20 min. The tissue section was blocked with 10% goat serum. The tissue section was then stained with ARG58428 anti-CHRNA5 antibody at 1 µg/ml dilution, overnight at 4°C.

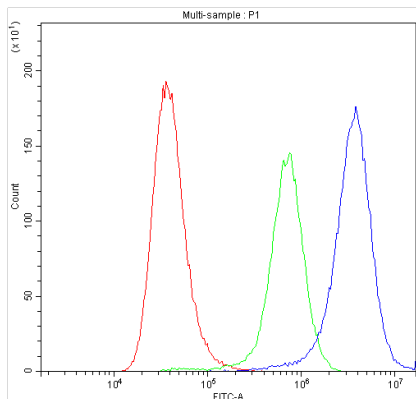
ARG58428 anti-CHRNA5 antibody WB image

Western blot: 50 µg of Rat skeletal muscle and HepG2 whole cell lysate stained with ARG58428 anti-CHRNA5 antibody at 0.5 µg/ml, overnight at 4°C, under reducing conditions.



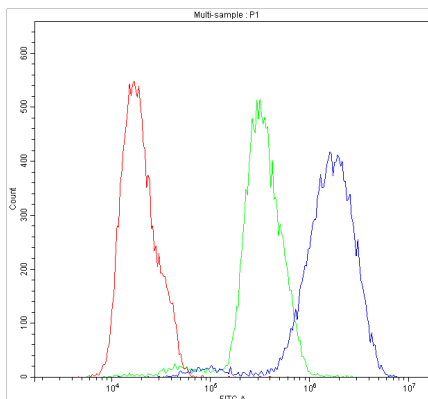
ARG58428 anti-CHRNA5 antibody FACS image

Flow Cytometry: A549 cells were blocked with 10% normal goat serum, and then stained with ARG58428 anti-CHRNA5 antibody (blue) at 1 µg/10⁶ cells for 30 min at 20°C, followed by DyLight®488 labelled secondary antibody. Isotype control antibody (green) was rabbit IgG (1 µg/10⁶ cells) used under the same conditions. Unlabelled sample (red) was also used as a control.



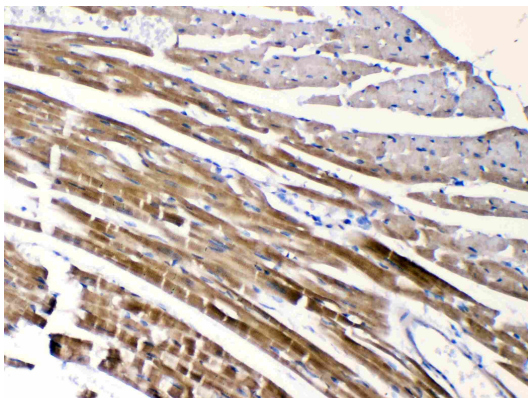
ARG58428 anti-CHRNA5 antibody FACS image

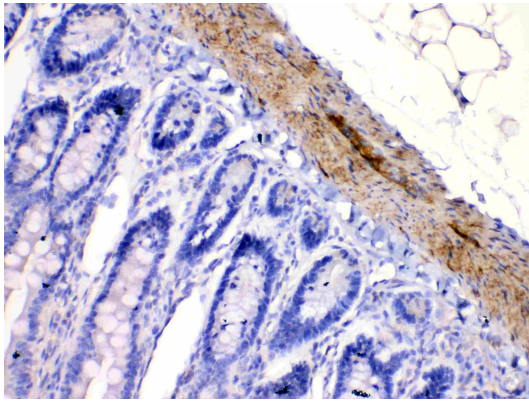
Flow Cytometry: MCF-7 cells were blocked with 10% normal goat serum, and then stained with ARG58428 anti-CHRNA5 antibody (blue) at 1 µg/10⁶ cells for 30 min at 20°C, followed by DyLight®488 labelled secondary antibody. Isotype control antibody (green) was rabbit IgG (1 µg/10⁶ cells) used under the same conditions. Unlabelled sample (red) was also used as a control.



ARG58428 anti-CHRNA5 antibody IHC-P image

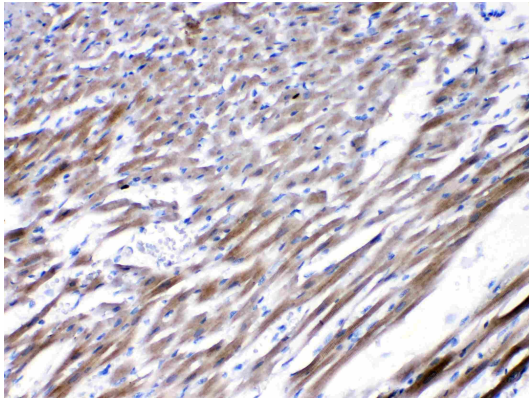
Immunohistochemistry: Paraffin-embedded Mouse cardiac muscle tissue. Antigen Retrieval: Heat mediated was performed in Citrate buffer (pH 6.0, epitope retrieval solution) for 20 min. The tissue section was blocked with 10% goat serum. The tissue section was then stained with ARG58428 anti-CHRNA5 antibody at 1 µg/ml dilution, overnight at 4°C.





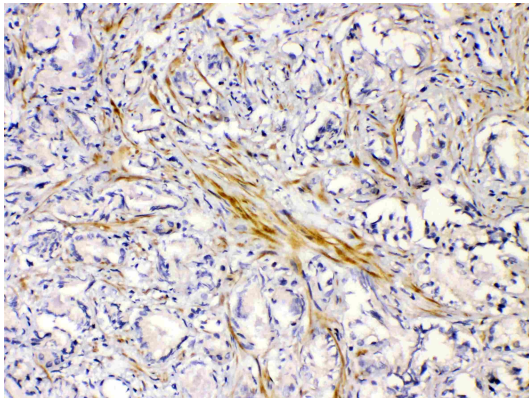
ARG58428 anti-CHRNA5 antibody IHC-P image

Immunohistochemistry: Paraffin-embedded Rat intestine tissue. Antigen Retrieval: Heat mediated was performed in Citrate buffer (pH 6.0, epitope retrieval solution) for 20 min. The tissue section was blocked with 10% goat serum. The tissue section was then stained with ARG58428 anti-CHRNA5 antibody at 1 µg/ml dilution, overnight at 4°C.



ARG58428 anti-CHRNA5 antibody IHC-P image

Immunohistochemistry: Paraffin-embedded Rat cardiac muscle tissue. Antigen Retrieval: Heat mediated was performed in Citrate buffer (pH 6.0, epitope retrieval solution) for 20 min. The tissue section was blocked with 10% goat serum. The tissue section was then stained with ARG58428 anti-CHRNA5 antibody at 1 µg/ml dilution, overnight at 4°C.



ARG58428 anti-CHRNA5 antibody IHC-P image

Immunohistochemistry: Paraffin-embedded Human prostatic cancer tissue. Antigen Retrieval: Heat mediated was performed in Citrate buffer (pH 6.0, epitope retrieval solution) for 20 min. The tissue section was blocked with 10% goat serum. The tissue section was then stained with ARG58428 anti-CHRNA5 antibody at 1 µg/ml dilution, overnight at 4°C.