

ARG58433 anti-KLF6 antibody

Package: 50 µg
Store at: -20°C

Summary

Product Description	Rabbit Polyclonal antibody recognizes KLF6
Tested Reactivity	Hu, Ms, Rat
Tested Application	WB
Host	Rabbit
Clonality	Polyclonal
Isotype	IgG
Target Name	KLF6
Species	Human
Immunogen	Human KLF6 recombinant protein (Position: E38-N205). Human KLF6 shares 92% and 90% amino acid (aa) sequences identity with Mouse and Rat KLF6, respectively.
Conjugation	Un-conjugated
Alternate Names	GBF; ZF9; PAC1; Krueppel-like factor 6; GC-rich sites-binding factor GBF; COPEB; CPBP; Transcription factor Zf9; BCD1; CBA1; Suppressor of tumorigenicity 12 protein; Proto-oncogene BCD1; ST12; B-cell-derived protein 1; Core promoter element-binding protein

Application Instructions

Application table	Application	Dilution
	WB	0.1 - 0.5 µg/ml
Application Note	* The dilutions indicate recommended starting dilutions and the optimal dilutions or concentrations should be determined by the scientist.	

Properties

Form	Liquid
Purification	Affinity purification with immunogen.
Buffer	0.9% NaCl, 0.2% Na ₂ HPO ₄ , 0.05% Sodium azide and 5% BSA.
Preservative	0.05% Sodium azide
Stabilizer	5% BSA
Concentration	0.5 mg/ml
Storage instruction	For continuous use, store undiluted antibody at 2-8°C for up to a week. For long-term storage, aliquot and store at -20°C or below. Storage in frost free freezers is not recommended. Avoid repeated freeze/thaw cycles. Suggest spin the vial prior to opening. The antibody solution should be gently mixed before use.
Note	For laboratory research only, not for drug, diagnostic or other use.

Bioinformation

Gene Symbol	KLF6
Gene Full Name	Kruppel-like factor 6
Background	This gene encodes a member of the Kruppel-like family of transcription factors. The zinc finger protein is a transcriptional activator, and functions as a tumor suppressor. Multiple transcript variants encoding different isoforms have been found for this gene, some of which are implicated in carcinogenesis. [provided by RefSeq, May 2009]
Function	Transcriptional activator (By similarity). Binds a GC box motif. Could play a role in B-cell growth and development. [UniProt]
Calculated Mw	32 kDa
Cellular Localization	Nucleus. [UniProt]

Images

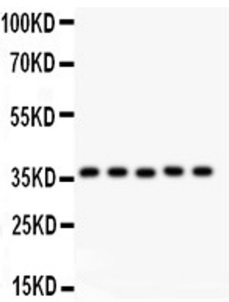
Recombinant Human KLF6



ARG58433 anti-KLF6 antibody WB image

Western blot: 0.5 ng of Recombinant Human KLF6 Protein stained with ARG58433 anti-KLF6 antibody at 0.5 µg/ml dilution.

Human placenta
Rat testis
HeLa
HepG2
HEPA



ARG58433 anti-KLF6 antibody WB image

Western blot: 50 µg of Human placenta, 50 µg of Rat testis, 40 µg of HeLa, 40 µg of HepG2 and 40 µg of HEPA whole cell lysates stained with ARG58433 anti-KLF6 antibody at 0.5 µg/ml dilution.