

## ARG58501 anti-DTNA / alpha dystrobrevin antibody

Package: 100 µl  
Store at: -20°C

### Summary

Product Description	Rabbit Polyclonal antibody recognizes DTNA / alpha dystrobrevin
Tested Reactivity	Hu, Ms
Tested Application	WB
Host	Rabbit
Clonality	Polyclonal
Isotype	IgG
Target Name	DTNA / alpha dystrobrevin
Species	Human
Immunogen	Recombinant fusion protein corresponding to aa. 240-480 of Human DTNA / alpha dystrobrevin (NP_001381.2).
Conjugation	Un-conjugated
Alternate Names	D18S892E; DTN; DRP3; Dystrobrevin alpha; Alpha-dystrobrevin; LVNC1; Dystrophin-related protein 3; DTN-A

### Application Instructions

Application table	Application	Dilution
	WB	1:500 - 1:2000
Application Note	* The dilutions indicate recommended starting dilutions and the optimal dilutions or concentrations should be determined by the scientist.	
Positive Control	Mouse brain	
Observed Size	~ 80 kDa	

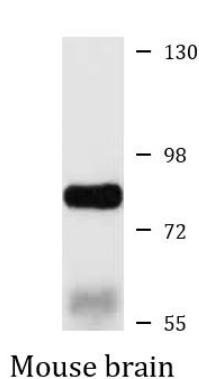
### Properties

Form	Liquid
Purification	Affinity purified.
Buffer	PBS (pH 7.3), 0.02% Sodium azide and 50% Glycerol.
Preservative	0.02% Sodium azide
Stabilizer	50% Glycerol
Storage instruction	For continuous use, store undiluted antibody at 2-8°C for up to a week. For long-term storage, aliquot and store at -20°C. Storage in frost free freezers is not recommended. Avoid repeated freeze/thaw cycles. Suggest spin the vial prior to opening. The antibody solution should be gently mixed before use.
Note	For laboratory research only, not for drug, diagnostic or other use.

## Bioinformation

Gene Symbol	DTNA
Gene Full Name	dystrobrevin, alpha
Background	The protein encoded by this gene belongs to the dystrobrevin subfamily of the dystrophin family. This protein is a component of the dystrophin-associated protein complex (DPC), which consists of dystrophin and several integral and peripheral membrane proteins, including dystroglycans, sarcoglycans, syntrophins and alpha- and beta-dystrobrevin. The DPC localizes to the sarcolemma and its disruption is associated with various forms of muscular dystrophy. Mutations in this gene are associated with left ventricular noncompaction with congenital heart defects. Multiple alternatively spliced transcript variants encoding different isoforms have been identified for this gene. [provided by RefSeq, Jul 2008]
Function	May be involved in the formation and stability of synapses as well as being involved in the clustering of nicotinic acetylcholine receptors. [UniProt]
Calculated Mw	84 kDa
PTM	Phosphorylation of DTN-1 on tyrosine kinase substrate domain present in the C-terminus. [UniProt]
Cellular Localization	Cytoplasm, Cell junction, synapse, Cell membrane. [UniProt]

## Images



ARG58501 anti-DTNA / alpha dystrobrevin antibody WB image

Western blot: 25 µg of Mouse brain lysate stained with ARG58501 anti-DTNA / alpha dystrobrevin antibody at 1:3000 dilution.