

## ARG58514 anti-DRD3 / Dopamine Receptor D3 antibody

Package: 50 µg  
Store at: -20°C

### Summary

Product Description	Rabbit Polyclonal antibody recognizes DRD3 / Dopamine Receptor D3
Tested Reactivity	Hu, Rat
Predict Reactivity	Chk
Tested Application	IHC-P, WB
Host	Rabbit
Clonality	Polyclonal
Isotype	IgG
Target Name	DRD3 / Dopamine Receptor D3
Species	Human
Immunogen	Synthetic peptide corresponding to a sequence at the C-terminus of Human Dopamine Receptor D3(352-367aa NTHCQTCHVSPELYSA), different from the related Rat and Mouse sequences by two amino acids.
Conjugation	Un-conjugated
Alternate Names	D3DR; ETM1; FET1; D(3) dopamine receptor; Dopamine D3 receptor

### Application Instructions

Application table	Application	Dilution
	IHC-P	0.5 - 1 µg/ml
	WB	0.1 - 0.5 µg/ml

**Application Note** IHC-P: Antigen Retrieval: By heat mediation.  
\* The dilutions indicate recommended starting dilutions and the optimal dilutions or concentrations should be determined by the scientist.

### Properties

Form	Liquid
Purification	Affinity purification with immunogen.
Buffer	0.9% NaCl, 0.2% Na <sub>2</sub> HPO <sub>4</sub> , 0.05% Thimerosal, 0.05% Sodium azide and 5% BSA.
Preservative	0.05% Thimerosal and 0.05% Sodium azide
Stabilizer	5% BSA
Concentration	0.5 mg/ml
Storage instruction	For continuous use, store undiluted antibody at 2-8°C for up to a week. For long-term storage, aliquot and store at -20°C or below. Storage in frost free freezers is not recommended. Avoid repeated freeze/thaw cycles. Suggest spin the vial prior to opening. The antibody solution should be gently mixed

before use.

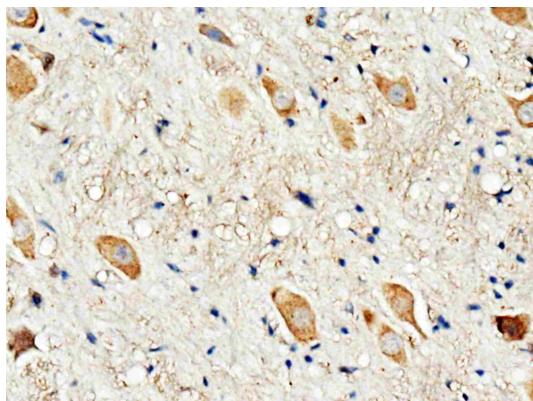
Note

For laboratory research only, not for drug, diagnostic or other use.

## Bioinformation

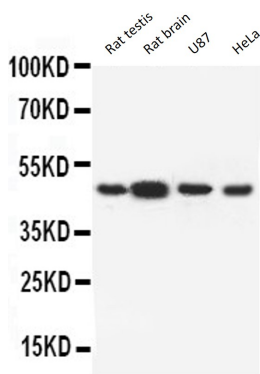
Gene Symbol	DRD3
Gene Full Name	dopamine receptor D3
Background	This gene encodes the D3 subtype of the five (D1-D5) dopamine receptors. The activity of the D3 subtype receptor is mediated by G proteins which inhibit adenylyl cyclase. This receptor is localized to the limbic areas of the brain, which are associated with cognitive, emotional, and endocrine functions. Genetic variation in this gene may be associated with susceptibility to hereditary essential tremor 1. Alternative splicing of this gene results in transcript variants encoding different isoforms, although some variants may be subject to nonsense-mediated decay (NMD). [provided by RefSeq, Jul 2008]
Function	Dopamine receptor whose activity is mediated by G proteins which inhibit adenylyl cyclase. Promotes cell proliferation. [UniProt]
Calculated Mw	44 kDa
PTM	Phosphorylated by GRK4 (GRK4-alpha and GRK4-gamma). [UniProt]
Cellular Localization	Cell membrane; Multi-pass membrane protein. Both membrane-bound and scattered in the cytoplasm during basal conditions. Receptor stimulation results in the rapid internalization and sequestration of the receptors at the perinuclear area (5 and 15 minutes), followed by the dispersal of the receptors to the membrane (30 minutes). DRD3 and GRK4 co-localize in lipid rafts of renal proximal tubule cells. [UniProt]

## Images



ARG58514 anti-DRD3 / Dopamine Receptor D3 antibody IHC-P image

Immunohistochemistry: Paraffin-embedded Rat brain stained with ARG58514 anti-DRD3 / Dopamine Receptor D3 antibody.



ARG58514 anti-DRD3 / Dopamine Receptor D3 antibody WB image

Western blot: Rat testis, Rat brain, U87 and HeLa lysates stained with ARG58514 anti-DRD3 / Dopamine Receptor D3 antibody.