

ARG58538 anti-Cytochrome b5 antibody

Package: 100 µl
Store at: -20°C

Summary

Product Description	Rabbit Polyclonal antibody recognizes Cytochrome b5
Tested Reactivity	Hu
Tested Application	IHC-P, WB
Host	Rabbit
Clonality	Polyclonal
Isotype	IgG
Target Name	Cytochrome b5
Species	Human
Immunogen	KLH-conjugated synthetic peptide corresponding to aa. 69-98 (Center) of Human Cytochrome b5.
Conjugation	Un-conjugated
Alternate Names	Microsomal cytochrome b5 type A; MCB5; Cytochrome b5; CYB5

Application Instructions

Application table	Application	Dilution
	IHC-P	1:10 - 1:50
	WB	1:1000
Application Note	* The dilutions indicate recommended starting dilutions and the optimal dilutions or concentrations should be determined by the scientist.	
Positive Control	HepG2	

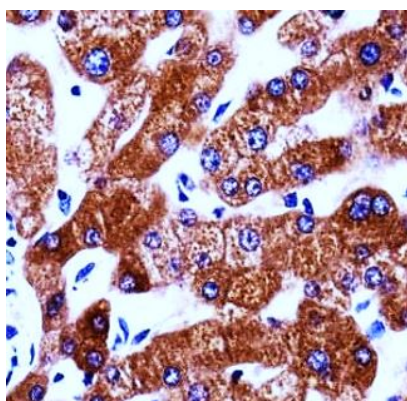
Properties

Form	Liquid
Purification	Purification with Protein A and immunogen peptide.
Buffer	PBS and 0.09% (W/V) Sodium azide.
Preservative	0.09% (W/V) Sodium azide.
Storage instruction	For continuous use, store undiluted antibody at 2-8°C for up to a week. For long-term storage, aliquot and store at -20°C or below. Storage in frost free freezers is not recommended. Avoid repeated freeze/thaw cycles. Suggest spin the vial prior to opening. The antibody solution should be gently mixed before use.
Note	For laboratory research only, not for drug, diagnostic or other use.

Bioinformation

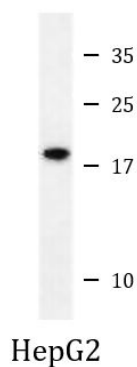
Gene Symbol	CYB5A
Gene Full Name	cytochrome b5 type A (microsomal)
Background	The protein encoded by this gene is a membrane-bound cytochrome that reduces ferric hemoglobin (methemoglobin) to ferrous hemoglobin, which is required for stearyl-CoA-desaturase activity. Defects in this gene are a cause of type IV hereditary methemoglobinemia. Three transcript variants encoding different isoforms have been found for this gene. [provided by RefSeq, Jun 2010]
Function	Cytochrome b5 is a membrane bound hemoprotein which function as an electron carrier for several membrane bound oxygenases. [UniProt]
Calculated Mw	15 kDa
Cellular Localization	Isoform 1: Endoplasmic reticulum membrane; Single-pass membrane protein; Cytoplasmic side. Microsome membrane; Single-pass membrane protein; Cytoplasmic side. [UniProt]

Images



ARG58538 anti-Cytochrome b5 antibody IHC-P image

Immunohistochemistry: Formalin-fixed and paraffin-embedded Human liver tissue stained with ARG58538 anti-Cytochrome b5 antibody.



ARG58538 anti-Cytochrome b5 antibody WB image

Western blot: 35 µg of HepG2 cell lysate stained with ARG58538 anti-Cytochrome b5 antibody.