

ARG58577 anti-Emerin antibody [5A10]

Package: 50 µg
Store at: -20°C

Summary

Product Description	Mouse Monoclonal antibody [5A10] recognizes Emerin
Tested Reactivity	Hu
Tested Application	FACS, IHC-P, WB
Host	Mouse
Clonality	Monoclonal
Clone	5A10
Isotype	IgG1
Target Name	Emerin
Species	Human
Immunogen	Synthetic peptide corresponding to aa. 1-48 of Human Emerin. (MDNYADLSDELTLRLRRYNIPHGPPVVGSTRRLYEKKIFEYETQRRRL)
Conjugation	Un-conjugated
Alternate Names	Emerin; LEMD5; EDMD; STA

Application Instructions

Application table	Application	Dilution
	FACS	1:150 - 1:500
	IHC-P	0.5 - 1 µg/ml
	WB	0.1 - 0.5 µg/ml
Application Note	IHC-P: Antigen Retrieval: Heat mediation was performed in Citrate buffer (pH 6.0) for 20 min. * The dilutions indicate recommended starting dilutions and the optimal dilutions or concentrations should be determined by the scientist.	

Properties

Form	Liquid
Purification	Purified.
Buffer	0.9% NaCl, 0.2% Na ₂ HPO ₄ , 0.05% Sodium azide and 4% Trehalose.
Preservative	0.05% Sodium azide
Stabilizer	4% Trehalose
Concentration	0.5 mg/ml
Storage instruction	For continuous use, store undiluted antibody at 2-8°C for up to a week. For long-term storage, aliquot and store at -20°C or below. Storage in frost free freezers is not recommended. Avoid repeated freeze/thaw cycles. Suggest spin the vial prior to opening. The antibody solution should be gently mixed

before use.

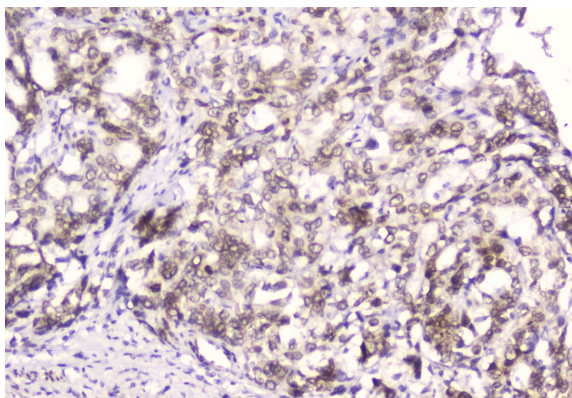
Note

For laboratory research only, not for drug, diagnostic or other use.

Bioinformation

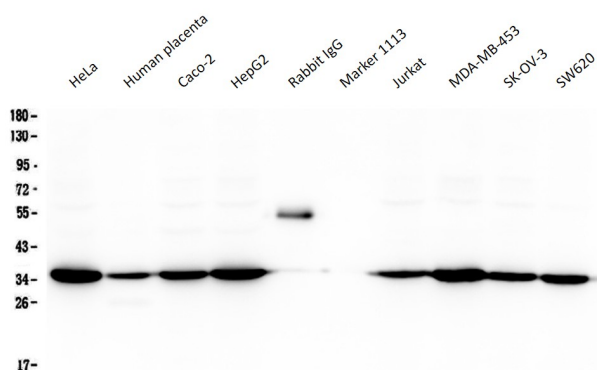
Gene Symbol	EMD
Gene Full Name	emerin
Background	Emerin is a serine-rich nuclear membrane protein and a member of the nuclear lamina-associated protein family. It mediates membrane anchorage to the cytoskeleton. Dreifuss-Emery muscular dystrophy is an X-linked inherited degenerative myopathy resulting from mutation in the emerin gene. [provided by RefSeq, Jul 2008]
Function	Stabilizes and promotes the formation of a nuclear actin cortical network. Stimulates actin polymerization in vitro by binding and stabilizing the pointed end of growing filaments. Inhibits beta-catenin activity by preventing its accumulation in the nucleus. Acts by influencing the nuclear accumulation of beta-catenin through a CRM1-dependent export pathway. Links centrosomes to the nuclear envelope via a microtubule association. EMD and BAF are cooperative cofactors of HIV-1 infection. Association of EMD with the viral DNA requires the presence of BAF and viral integrase. The association of viral DNA with chromatin requires the presence of BAF and EMD. Required for proper localization of non-farnesylated prelamin-A/C. [UniProt]
Calculated Mw	29 kDa
PTM	Found in four different phosphorylated forms, three of which appear to be associated with the cell cycle. [UniProt]
Cellular Localization	Nucleus inner membrane. [UniProt]

Images



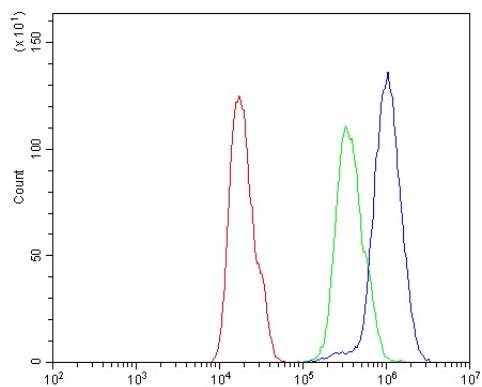
ARG58577 anti-Emerin antibody [5A10] IHC-P image

Immunohistochemistry: Paraffin-embedded Human gastric cancer tissue. Antigen Retrieval: Heat mediated was performed in Citrate buffer (pH 6.0) for 20 min. The tissue section was blocked with 10% goat serum. The section was stained with ARG58577 anti-Emerin antibody [5A10] at 2 µg/ml, overnight at 4°C.



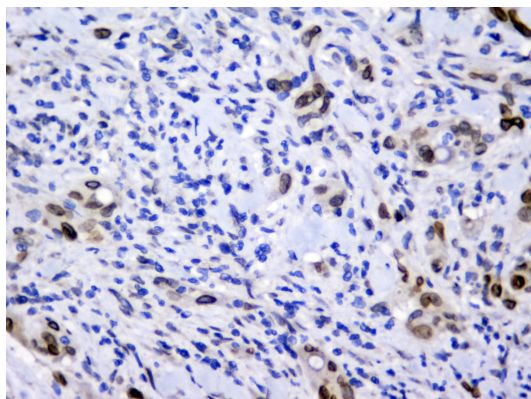
ARG58577 anti-Emerin antibody [5A10] WB image

Western blot: 50 µg of HeLa, Human placenta, Caco-2, HepG2, Rabbit IgG, Marker 1113, Jurkat, MDA-MB-453, SK-OV-3 and SW620 lysates stained with ARG58577 anti-Emerin antibody [5A10] at 0.5 µg/ml, overnight at 4°C, under reducing conditions.



ARG58577 anti-Emerin antibody [5A10] FACS image

Flow Cytometry: A431 cells were blocked with 10% normal goat serum and then stained with ARG58577 anti-Emerin antibody [5A10] (blue) at $1\text{ }\mu\text{g}/10^6$ cells for 30 min at 20°C , followed by incubation with DyLight[®]488 labelled secondary antibody. Isotype control antibody (green) was mouse IgG ($1\text{ }\mu\text{g}/10^6$ cells) used under the same conditions. Unlabelled sample (red) was also used as a control.



ARG58577 anti-Emerin antibody [5A10] IHC-P image

Immunohistochemistry: Paraffin-embedded Human rectal cancer tissue. Antigen Retrieval: Heat mediated was performed in Citrate buffer (pH 6.0) for 20 min. The tissue section was blocked with 10% goat serum. The tissue section was then stained with $2\text{ }\mu\text{g}/\text{ml}$ ARG58577 anti-Emerin antibody [5A10] overnight at 4°C .