

ARG58588 anti-EPB41L1 / 4.1N antibody

Package: 50 µg
Store at: -20°C

Summary

Product Description	Rabbit Polyclonal antibody recognizes EPB41L1 / 4.1N
Tested Reactivity	Hu, Ms, Rat
Tested Application	WB
Host	Rabbit
Clonality	Polyclonal
Isotype	IgG
Target Name	EPB41L1 / 4.1N
Species	Human
Immunogen	Recombinant protein corresponding to Q691-S881 of Human EPB41L1 / 4.1N.
Conjugation	Un-conjugated
Alternate Names	Neuronal protein 4.1; MRD11; Band 4.1-like protein 1; 4.1N

Application Instructions

Application table	Application	Dilution
	WB	0.1 - 0.5 µg/ml
Application Note	* The dilutions indicate recommended starting dilutions and the optimal dilutions or concentrations should be determined by the scientist.	

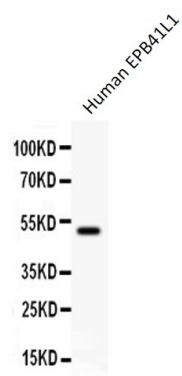
Properties

Form	Liquid
Purification	Affinity purification with immunogen.
Buffer	0.9% NaCl, 0.2% Na ₂ HPO ₄ , 0.05% Sodium azide and 5% BSA.
Preservative	0.05% Sodium azide
Stabilizer	5% BSA
Concentration	0.5 mg/ml
Storage instruction	For continuous use, store undiluted antibody at 2-8°C for up to a week. For long-term storage, aliquot and store at -20°C or below. Storage in frost free freezers is not recommended. Avoid repeated freeze/thaw cycles. Suggest spin the vial prior to opening. The antibody solution should be gently mixed before use.
Note	For laboratory research only, not for drug, diagnostic or other use.

Bioinformation

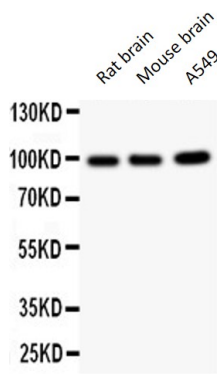
Gene Symbol	EPB41L1
Gene Full Name	erythrocyte membrane protein band 4.1-like 1
Background	Erythrocyte membrane protein band 4.1 (EPB41) is a multifunctional protein that mediates interactions between the erythrocyte cytoskeleton and the overlying plasma membrane. The encoded protein binds and stabilizes D2 and D3 dopamine receptors at the neuronal plasma membrane. Multiple transcript variants encoding different isoforms have been found for this gene. [provided by RefSeq, Jan 2015]
Function	May function to confer stability and plasticity to neuronal membrane via multiple interactions, including the spectrin-actin-based cytoskeleton, integral membrane channels and membrane-associated guanylate kinases. [UniProt]
Calculated Mw	99 kDa
Cellular Localization	Cytoplasm, cytoskeleton. [UniProt]

Images



ARG58588 anti-EPB41L1 / 4.1N antibody WB image

Western blot: 0.5 ng of Recombinant Human EPB41L1 Protein stained with ARG58588 anti-EPB41L1 / 4.1N antibody at 0.5 µg/ml dilution.



ARG58588 anti-EPB41L1 / 4.1N antibody WB image

Western blot: 50 µg of Rat brain, 50 µg of Mouse brain and 40 µg of A549 whole cell lysate stained with ARG58588 anti-EPB41L1 / 4.1N antibody at 0.5 µg/ml dilution.