

## ARG58602 anti-eEF1D antibody

Package: 100 µl  
Store at: -20°C

### Summary

Product Description	Rabbit Polyclonal antibody recognizes eEF1D
Tested Reactivity	Hu
Predict Reactivity	Ms, Rat, Mk
Tested Application	FACS, WB
Host	Rabbit
Clonality	Polyclonal
Isotype	IgG
Target Name	eEF1D
Species	Human
Immunogen	KLH-conjugated synthetic peptide between aa. 1-30 of Human eEF1D.
Conjugation	Un-conjugated
Alternate Names	Antigen NY-CO-4; FP1047; EF-1-delta; EF1D; EF-1D; Elongation factor 1-delta

### Application Instructions

Application table	Application	Dilution
	FACS	1:10 - 1:50
	WB	1:1000
Application Note	* The dilutions indicate recommended starting dilutions and the optimal dilutions or concentrations should be determined by the scientist.	
Positive Control	Ramos	

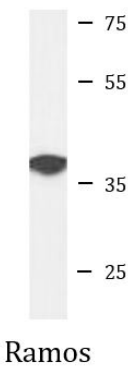
### Properties

Form	Liquid
Purification	This antibody is prepared by Saturated Ammonium Sulfate (SAS) precipitation followed by dialysis against PBS.
Buffer	PBS and 0.09% (W/V) Sodium azide.
Preservative	0.09% (W/V) Sodium azide
Storage instruction	For continuous use, store undiluted antibody at 2-8°C for up to a week. For long-term storage, aliquot and store at -20°C or below. Storage in frost free freezers is not recommended. Avoid repeated freeze/thaw cycles. Suggest spin the vial prior to opening. The antibody solution should be gently mixed before use.
Note	For laboratory research only, not for drug, diagnostic or other use.

Bioinformation

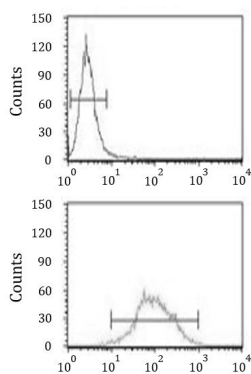
Gene Symbol	EEF1D
Gene Full Name	eukaryotic translation elongation factor 1 delta (guanine nucleotide exchange protein)
Background	This gene encodes a subunit of the elongation factor-1 complex, which is responsible for the enzymatic delivery of aminoacyl tRNAs to the ribosome. This subunit, delta, functions as guanine nucleotide exchange factor. It is reported that following HIV-1 infection, this subunit interacts with HIV-1 Tat. This interaction results in repression of translation of host cell proteins and enhanced translation of viral proteins. Several alternatively spliced transcript variants encoding multiple isoforms have been found for this gene. Related pseudogenes have been defined on chromosomes 1, 6, 7, 9, 11, 13, 17, 19.[provided by RefSeq, Aug 2010]
Function	<p>Isoform 1: EF-1-beta and EF-1-delta stimulate the exchange of GDP bound to EF-1-alpha to GTP, regenerating EF-1-alpha for another round of transfer of aminoacyl-tRNAs to the ribosome.</p> <p>Isoform 2: Regulates induction of heat-shock-responsive genes through association with heat shock transcription factors and direct DNA-binding at heat shock promoter elements (HSE). [UniProt]</p>
Calculated Mw	31 kDa

Images



ARG58602 anti-eEF1D antibody WB image

Western blot: 35 µg of Ramos cell lysate stained with ARG58602 anti-eEF1D antibody.



ARG58602 anti-eEF1D antibody FACS image

Flow Cytometry: Ramos cells stained with ARG58602 anti-eEF1D antibody (bottom histogram) or without primary antibody as control (top histogram), followed by incubation with FITC labelled secondary antibody.