

## ARG58605 anti-ETV6 / Tel antibody

Package: 100 µl  
Store at: -20°C

### Summary

|                     |   |
|---------------------|---|
| Product Description | Rabbit Polyclonal antibody recognizes ETV6 / Tel  |
| Tested Reactivity   | Hu  |
| Predict Reactivity  | Ms, Bov   |
| Tested Application  | FACS, IHC-P, WB   |
| Host                | Rabbit  |
| Clonality           | Polyclonal  |
| Isotype             | IgG   |
| Target Name         | ETV6 / Tel  |
| Species             | Human   |
| Immunogen           | KLH-conjugated synthetic peptide between aa. 84-111 of Human ETV6 / Tel.                                  |
| Conjugation         | Un-conjugated   |
| Alternate Names     | TEL; TEL/ABL; Transcription factor ETV6; THC5; ETS-related protein Tel1; Tel; ETS translocation variant 6 |

### Application Instructions

|                   |  |             |
|-------------------|--|-------------|
| Application table | Application  | Dilution    |
|                   | FACS   | 1:10 - 1:50 |
|                   | IHC-P  | 1:10 - 1:50 |
|                   | WB   | 1:1000      |
| Application Note  | * The dilutions indicate recommended starting dilutions and the optimal dilutions or concentrations should be determined by the scientist. |             |
| Positive Control  | U266   |             |

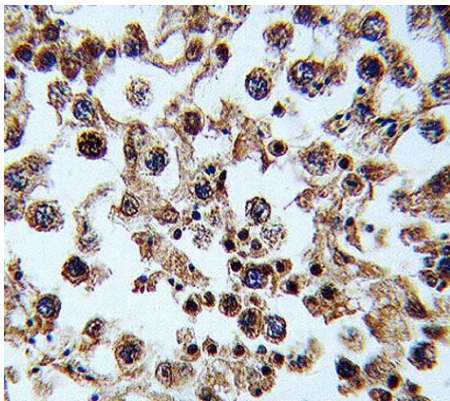
### Properties

|                     |  |
|---------------------|--|
| Form                | Liquid   |
| Purification        | Purification with Protein A and immunogen peptide.   |
| Buffer              | PBS and 0.09% (W/V) Sodium azide.  |
| Preservative        | 0.09% (W/V) Sodium azide   |
| Storage instruction | For continuous use, store undiluted antibody at 2-8°C for up to a week. For long-term storage, aliquot and store at -20°C or below. Storage in frost free freezers is not recommended. Avoid repeated freeze/thaw cycles. Suggest spin the vial prior to opening. The antibody solution should be gently mixed before use. |
| Note                | For laboratory research only, not for drug, diagnostic or other use.   |

## Bioinformation

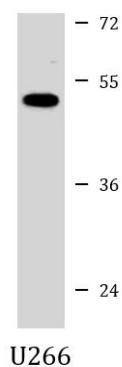
|                       |  |
|-----------------------|--|
| Gene Symbol           | ETV6   |
| Gene Full Name        | ets variant 6  |
| Background            | This gene encodes an ETS family transcription factor. The product of this gene contains two functional domains: a N-terminal pointed (PNT) domain that is involved in protein-protein interactions with itself and other proteins, and a C-terminal DNA-binding domain. Gene knockout studies in mice suggest that it is required for hematopoiesis and maintenance of the developing vascular network. This gene is known to be involved in a large number of chromosomal rearrangements associated with leukemia and congenital fibrosarcoma. [provided by RefSeq, Sep 2008] |
| Function              | Transcriptional repressor; binds to the DNA sequence 5'-CCGGAAGT-3'. Plays a role in hematopoiesis and malignant transformation. [UniProt]   |
| Calculated Mw         | 53 kDa   |
| PTM                   | Phosphorylation of Ser-257 by MAPK14 (p38) inhibits ETV6 transcriptional repression. [UniProt]   |
| Cellular Localization | Nucleus. [UniProt]   |

## Images



ARG58605 anti-ETV6 / Tel antibody IHC-P image

Immunohistochemistry: Formalin-fixed and paraffin-embedded Human testis tissue stained with ARG58605 anti-ETV6 / Tel antibody.



ARG58605 anti-ETV6 / Tel antibody WB image

Western blot: 35 µg of U266 cell lysate stained with ARG58605 anti-ETV6 / Tel antibody.

### ARG58605 anti-ETV6 / Tel antibody FACS image

Flow Cytometry: K562 cells stained with ARG58605 anti-ETV6 / Tel antibody (bottom histogram) or without primary antibody as control (top histogram), followed by incubation with FITC labelled secondary antibody.

