

ARG58608 anti-ETS2 antibody

Package: 100 µl
Store at: -20°C

Summary

Product Description	Rabbit Polyclonal antibody recognizes ETS2
Tested Reactivity	Hu
Predict Reactivity	Ms, Bov
Tested Application	FACS, IHC-P, WB
Host	Rabbit
Clonality	Polyclonal
Isotype	IgG
Target Name	ETS2
Species	Human
Immunogen	KLH-conjugated synthetic peptide between aa. 146-173 of Human ETS2.
Conjugation	Un-conjugated
Alternate Names	Protein C-ets-2; ETS2IT1

Application Instructions

Application table	Application	Dilution
	FACS	1:10 - 1:50
	IHC-P	1:50 - 1:100
	WB	1:1000
Application Note	* The dilutions indicate recommended starting dilutions and the optimal dilutions or concentrations should be determined by the scientist.	
Positive Control	MCF7	

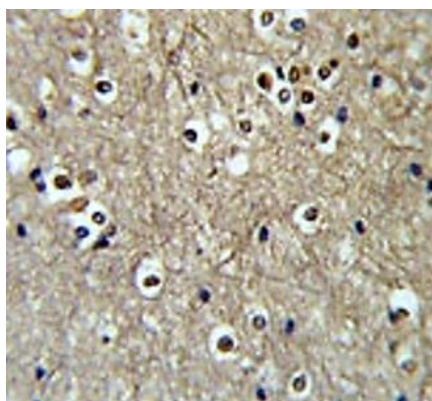
Properties

Form	Liquid
Purification	Purification with Protein A and immunogen peptide.
Buffer	PBS and 0.09% (W/V) Sodium azide.
Preservative	0.09% (W/V) Sodium azide
Storage instruction	For continuous use, store undiluted antibody at 2-8°C for up to a week. For long-term storage, aliquot and store at -20°C or below. Storage in frost free freezers is not recommended. Avoid repeated freeze/thaw cycles. Suggest spin the vial prior to opening. The antibody solution should be gently mixed before use.
Note	For laboratory research only, not for drug, diagnostic or other use.

Bioinformation

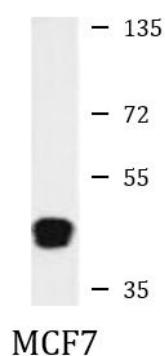
Gene Symbol	ETS2
Gene Full Name	v-ets avian erythroblastosis virus E26 oncogene homolog 2
Background	This gene encodes a transcription factor which regulates genes involved in development and apoptosis. The encoded protein is also a protooncogene and shown to be involved in regulation of telomerase. A pseudogene of this gene is located on the X chromosome. Alternative splicing results in multiple transcript variants. [provided by RefSeq, Jan 2012]
Function	Transcription factor activating transcription. Binds specifically the DNA GGAA/T core motif (Ets-binding site or EBS) in gene promoters and stimulates transcription. [UniProt]
Calculated Mw	53 kDa
PTM	Phosphorylation by CDK10 at Ser-220 and Ser-225 creates a phosphodegron that targets ETS2 for proteasomal degradation. [UniProt]
Cellular Localization	Nucleus. [UniProt]

Images



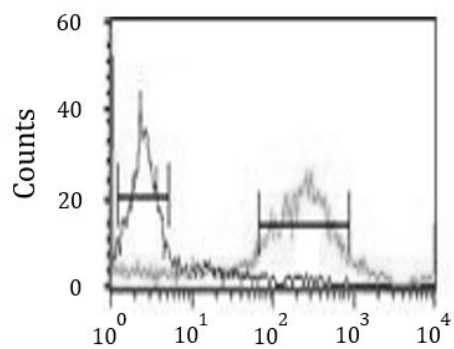
ARG58608 anti-ETS2 antibody IHC-P image

Immunohistochemistry: Formalin-fixed and paraffin-embedded Human brain tissue stained with ARG58608 anti-ETS2 antibody.



ARG58608 anti-ETS2 antibody WB image

Western blot: 35 µg of MCF7 cell lysate stained with ARG58608 anti-ETS2 antibody.



ARG58608 anti-ETS2 antibody FACS image

Flow Cytometry: MCF7 cells stained with ARG58608 anti-ETS2 antibody (right histogram) or without primary antibody as control (left histogram), followed by incubation with FITC labelled secondary antibody.