

## ARG58611 anti-PHC1 antibody

Package: 100 µl  
Store at: -20°C

### Summary

Product Description	Rabbit Polyclonal antibody recognizes PHC1
Tested Reactivity	Hu
Tested Application	WB
Host	Rabbit
Clonality	Polyclonal
Isotype	IgG
Target Name	PHC1
Species	Human
Immunogen	KLH-conjugated synthetic peptide between aa. 308-342 of Human PHC1.
Conjugation	Un-conjugated
Alternate Names	hPH1; RAE28; EDR1; Polyhomeotic-like protein 1; MCPH11; Early development regulatory protein 1; HPH1

### Application Instructions

Application table	Application	Dilution
	WB	1:2000
Application Note	* The dilutions indicate recommended starting dilutions and the optimal dilutions or concentrations should be determined by the scientist.	
Positive Control	Jurkat	

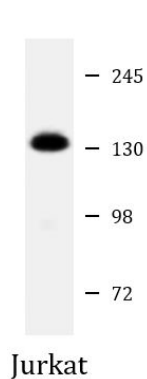
### Properties

Form	Liquid
Purification	Purification with Protein A and immunogen peptide.
Buffer	PBS and 0.09% (W/V) Sodium azide.
Preservative	0.09% (W/V) Sodium azide
Storage instruction	For continuous use, store undiluted antibody at 2-8°C for up to a week. For long-term storage, aliquot and store at -20°C or below. Storage in frost free freezers is not recommended. Avoid repeated freeze/thaw cycles. Suggest spin the vial prior to opening. The antibody solution should be gently mixed before use.
Note	For laboratory research only, not for drug, diagnostic or other use.

### Bioinformation

Gene Symbol	PHC1
Gene Full Name	polyhomeotic homolog 1 (Drosophila)
Background	This gene is a homolog of the Drosophila polyhomeotic gene, which is a member of the Polycomb group of genes. The gene product is a component of a multimeric protein complex that contains EDR2 and the vertebrate Polycomb protein BMH1. The gene product, the EDR2 protein, and the Drosophila polyhomeotic protein share 2 highly conserved domains, named homology domains I and II. These domains are involved in protein-protein interactions and may mediate heterodimerization of the protein encoded by this gene and the EDR2 protein. [provided by RefSeq, Jul 2008]
Function	Component of a Polycomb group (PcG) multiprotein PRC1-like complex, a complex class required to maintain the transcriptionally repressive state of many genes, including Hox genes, throughout development. PcG PRC1 complex acts via chromatin remodeling and modification of histones; it mediates monoubiquitination of histone H2A 'Lys-119', rendering chromatin heritably changed in its expressibility. Required for proper control of cellular levels of GMNN expression. [UniProt]
Calculated Mw	106 kDa

## Images



ARG58611 anti-PHC1 antibody WB image

Western blot: 20 µg of Jurkat cell lysate stained with ARG58611 anti-PHC1 antibody at 1:2000 dilution.