

ARG58616 anti-FECH antibody

Package: 50 µl
Store at: -20°C

Summary

Product Description	Rabbit Polyclonal antibody recognizes FECH
Tested Reactivity	Hu, Ms
Predict Reactivity	Cow, Rat, Dog, Gpig, Hrs, Rb, Yeast, Zfsh
Tested Application	ICC/IF, WB
Host	Rabbit
Clonality	Polyclonal
Isotype	IgG
Target Name	FECH
Species	Human
Immunogen	Synthetic peptide around the N-terminal region of Human FECH. (within the following sequence: LDRDLMTLP IQNKLAPFI AKRRTPKIQEQYRRIGGGSPIKIWTSKQGEGM)
Conjugation	Un-conjugated
Alternate Names	EPP; EC 4.99.1.1; Ferrochelatase, mitochondrial; FCE; Protoheme ferro-lyase; Heme synthase

Application Instructions

Predict Reactivity Note	Predicted homology based on immunogen sequence: Cow: 100%; Dog: 100%; Guinea Pig: 100%; Horse: 100%; Rabbit: 100%; Rat: 100%; Yeast: 77%; Zebrafish: 86%						
Application table	<table> <tr> <th>Application</th><th>Dilution</th></tr> <tr> <td>ICC/IF</td><td>Assay-dependent</td></tr> <tr> <td>WB</td><td>2.5 µg/ml</td></tr> </table>	Application	Dilution	ICC/IF	Assay-dependent	WB	2.5 µg/ml
Application	Dilution						
ICC/IF	Assay-dependent						
WB	2.5 µg/ml						
Application Note	* The dilutions indicate recommended starting dilutions and the optimal dilutions or concentrations should be determined by the scientist.						
Positive Control	Jurkat						

Properties

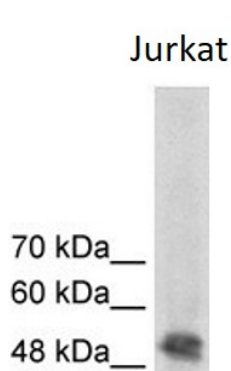
Form	Liquid
Purification	Purification with Protein A.
Buffer	PBS, 0.09% (w/v) Sodium azide and 2% Sucrose.
Preservative	0.09% (w/v) Sodium azide
Stabilizer	2% Sucrose
Concentration	Batch dependent: 0.5 - 1 mg/ml

Storage instruction	For continuous use, store undiluted antibody at 2-8°C for up to a week. For long-term storage, aliquot and store at -20°C or below. Storage in frost free freezers is not recommended. Avoid repeated freeze/thaw cycles. Suggest spin the vial prior to opening. The antibody solution should be gently mixed before use.
Note	For laboratory research only, not for drug, diagnostic or other use.

Bioinformation

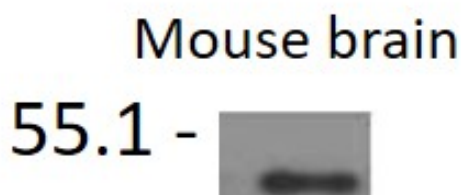
Gene Symbol	FECH
Gene Full Name	ferrochelatase
Background	The protein encoded by this gene is localized to the mitochondrion, where it catalyzes the insertion of the ferrous form of iron into protoporphyrin IX in the heme synthesis pathway. Mutations in this gene are associated with erythropoietic protoporphyria. Two transcript variants encoding different isoforms have been found for this gene. A pseudogene of this gene is found on chromosome 3.[provided by RefSeq, May 2010]
Function	Catalyzes the ferrous insertion into protoporphyrin IX. [UniProt]
Calculated Mw	48 kDa

Images



ARG58616 anti-FECH antibody WB image

Western blot: Jurkat cell lysate stained with ARG58616 anti-FECH antibody at 2.5 µg/ml dilution.



ARG58616 anti-FECH antibody WB image

Western blot: 6 µg of Mouse brain mitochondria extract stained with ARG58616 anti-FECH antibody at 1:500 dilution.