

ARG58639 anti-eEF1A1 + eEF1A2 antibody

Package: 100 µl
Store at: -20°C

Summary

Product Description	Rabbit Polyclonal antibody recognizes eEF1A1 + eEF1A2
Tested Reactivity	Hu, Ms, Rat
Tested Application	ICC/IF, WB
Host	Rabbit
Clonality	Polyclonal
Isotype	IgG
Target Name	eEF1A1 + eEF1A2
Species	Human
Immunogen	Recombinant fusion protein corresponding to aa. 123-462 of Human eEF1A1 (NP_001393.1).
Conjugation	Un-conjugated
Alternate Names	EEF1A1; EEF-1; Eukaryotic elongation factor 1 A-1; CCS-3; GRAF-1EF; LENG7; EEF1A; CCS3; HNGC:16303; EF-Tu; Elongation factor Tu; Leukocyte receptor cluster member 7; eEF1A-1; PTI1; EF1A; EF-1-alpha-1; Elongation factor 1-alpha 1

Application Instructions

Application table	Application	Dilution
	ICC/IF	1:20 - 1:100
	WB	1:500 - 1:2000
Application Note	* The dilutions indicate recommended starting dilutions and the optimal dilutions or concentrations should be determined by the scientist.	
Positive Control	HeLa	
Observed Size	50 kDa	

Properties

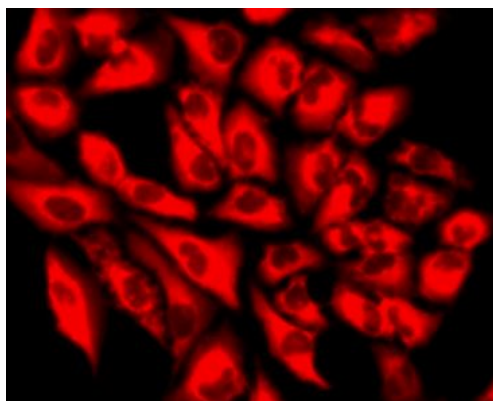
Form	Liquid
Purification	Affinity purified.
Buffer	PBS (pH 7.3), 0.02% Sodium azide and 50% Glycerol.
Preservative	0.02% Sodium azide
Stabilizer	50% Glycerol
Storage instruction	For continuous use, store undiluted antibody at 2-8°C for up to a week. For long-term storage, aliquot and store at -20°C. Storage in frost free freezers is not recommended. Avoid repeated freeze/thaw cycles. Suggest spin the vial prior to opening. The antibody solution should be gently mixed before use.

Note For laboratory research only, not for drug, diagnostic or other use.

Bioinformation

Gene Symbol	EEF1A1
Gene Full Name	eukaryotic translation elongation factor 1 alpha 1
Background	This gene encodes an isoform of the alpha subunit of the elongation factor-1 complex, which is responsible for the enzymatic delivery of aminoacyl tRNAs to the ribosome. This isoform (alpha 1) is expressed in brain, placenta, lung, liver, kidney, and pancreas, and the other isoform (alpha 2) is expressed in brain, heart and skeletal muscle. This isoform is identified as an autoantigen in 66% of patients with Felty syndrome. This gene has been found to have multiple copies on many chromosomes, some of which, if not all, represent different pseudogenes. [provided by RefSeq, Jul 2008]
Function	This protein promotes the GTP-dependent binding of aminoacyl-tRNA to the A-site of ribosomes during protein biosynthesis. With PARP1 and TXK, forms a complex that acts as a T helper 1 (Th1) cell-specific transcription factor and binds the promoter of IFN-gamma to directly regulate its transcription, and is thus involved importantly in Th1 cytokine production. [UniProt]
Calculated Mw	50 kDa
PTM	ISGylated. Phosphorylated by TXK. Phosphorylation by PASK increases translation efficiency. Phosphorylated by ROCK2 (PubMed:26497934). Trimethylated at Lys-79 by EEF1AKMT1 (PubMed:26545399). Methylated at Lys-165 by EEF1AKMT3, methylation by EEF1AKMT3 is dynamic as well as inducible by stress conditions, such as ER-stress, and plays a regulatory role on mRNA translation (PubMed:28108655). Trimethylated at Lys-318 by EEF1AKMT2 (PubMed:25144183). [UniProt]
Cellular Localization	Cytoplasm, Nucleus, nucleolus. [UniProt]

Images

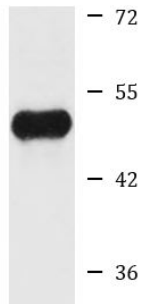


ARG58639 anti-eEF1A1 + eEF1A2 antibody ICC/IF image

Immunofluorescence: HeLa cells stained with ARG58639 anti-eEF1A1 + eEF1A2 antibody.

ARG58639 anti-eEF1A1 + eEF1A2 antibody WB image

Western blot: 25 µg of HeLa cell lysate stained with ARG58639 anti-eEF1A1 + eEF1A2 antibody at 1:1000 dilution.



HeLa