

ARG58663 anti-ELF2 antibody

Package: 100 µl
Store at: -20°C

Summary

Product Description	Rabbit Polyclonal antibody recognizes ELF2
Tested Reactivity	Hu, Ms
Tested Application	WB
Host	Rabbit
Clonality	Polyclonal
Isotype	IgG
Target Name	ELF2
Species	Human
Immunogen	Recombinant fusion protein corresponding to aa. 1-140 of Human ELF2 (NP_006865.1).
Conjugation	Un-conjugated
Alternate Names	NERF-2; EU32; NERF-1A; NERF-1B; E74-like factor 2; New ETS-related factor; ETS-related transcription factor Elf-2; NERF-1a,b; NERF

Application Instructions

Application table	<table> <tr> <th>Application</th><th>Dilution</th></tr> <tr> <td>WB</td><td>1:500 - 1:2000</td></tr> </table>	Application	Dilution	WB	1:500 - 1:2000
Application	Dilution				
WB	1:500 - 1:2000				
Application Note	* The dilutions indicate recommended starting dilutions and the optimal dilutions or concentrations should be determined by the scientist.				
Positive Control	A549				
Observed Size	64 kDa				

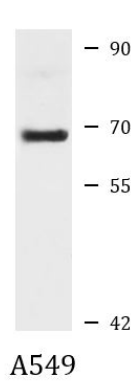
Properties

Form	Liquid
Purification	Affinity purified.
Buffer	PBS (pH 7.3), 0.02% Sodium azide and 50% Glycerol.
Preservative	0.02% Sodium azide
Stabilizer	50% Glycerol
Storage instruction	For continuous use, store undiluted antibody at 2-8°C for up to a week. For long-term storage, aliquot and store at -20°C. Storage in frost free freezers is not recommended. Avoid repeated freeze/thaw cycles. Suggest spin the vial prior to opening. The antibody solution should be gently mixed before use.
Note	For laboratory research only, not for drug, diagnostic or other use.

Bioinformation

Gene Symbol	ELF2
Gene Full Name	E74-like factor 2 (ets domain transcription factor)
Function	Isoform 1 transcriptionally activates the LYN and BLK promoters and acts synergistically with RUNX1 to transactivate the BLK promoter. Isoform 2 may function in repression of RUNX1-mediated transactivation. [UniProt]
Calculated Mw	64 kDa
Cellular Localization	Nucleus. [UniProt]

Images



ARG58663 anti-ELF2 antibody WB image

Western blot: 25 µg of A549 cell lysate stained with ARG58663 anti-ELF2 antibody at 1:1000 dilution.