

## ARG58700 anti-ADAM2 antibody

Package: 50 µg  
Store at: -20°C

### Summary

Product Description	Rabbit Polyclonal antibody recognizes ADAM2
Tested Reactivity	Hu, Ms, Rat
Tested Application	WB
Host	Rabbit
Clonality	Polyclonal
Isotype	IgG
Target Name	ADAM2
Species	Human
Immunogen	Synthetic peptide corresponding to aa. 231-274 of Human ADAM2 (WIDENKIATTGEANELHTFLRWKTSYLVLRPHDVAFLLVYREK).
Conjugation	Un-conjugated
Alternate Names	PH30-beta; Disintegrin and metalloproteinase domain-containing protein 2; CT15; PH30; PH-30; PH-30b; Fertilin subunit beta; ADAM 2; Cancer/testis antigen 15; FTNB; CRYN2; CRYN1

### Application Instructions

Application table	Application	Dilution
	WB	0.1 - 0.5 µg/ml
Application Note	* The dilutions indicate recommended starting dilutions and the optimal dilutions or concentrations should be determined by the scientist.	

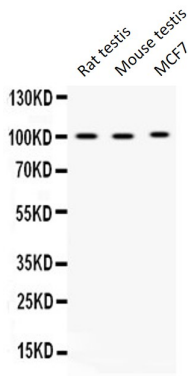
### Properties

Form	Liquid
Purification	Affinity purification with immunogen.
Buffer	0.9% NaCl, 0.2% Na <sub>2</sub> HPO <sub>4</sub> , 0.05% Sodium azide and 5% BSA.
Preservative	0.05% Sodium azide
Stabilizer	5% BSA
Concentration	0.5 mg/ml
Storage instruction	For continuous use, store undiluted antibody at 2-8°C for up to a week. For long-term storage, aliquot and store at -20°C or below. Storage in frost free freezers is not recommended. Avoid repeated freeze/thaw cycles. Suggest spin the vial prior to opening. The antibody solution should be gently mixed before use.
Note	For laboratory research only, not for drug, diagnostic or other use.

Bioinformation

Gene Symbol	ADAM2
Gene Full Name	ADAM metallopeptidase domain 2
Background	This gene encodes a member of the ADAM (a disintegrin and metalloprotease domain) family. Members of this family are membrane-anchored proteins structurally related to snake venom disintegrins, and have been implicated in a variety of biological processes involving cell-cell and cell-matrix interactions, including fertilization, muscle development, and neurogenesis. The encoded protein is a subunit of an integral sperm membrane glycoprotein called fertilin, which plays an important role in sperm-egg interactions. Alternative splicing results in multiple transcript variants encoding different isoforms. [provided by RefSeq, May 2013]
Function	Sperm surface membrane protein that may be involved in sperm-egg plasma membrane adhesion and fusion during fertilization. Could have a direct role in sperm-zona binding or migration of sperm from the uterus into the oviduct. Interactions with egg membrane could be mediated via binding between its disintegrin-like domain to one or more integrins receptors on the egg. This is a non catalytic metalloprotease-like protein. [UniProt]
Calculated Mw	82 kDa
PTM	The prodomain and the metalloprotease domain are cleaved during the epididymal maturation of the spermatozoa. [UniProt]
Cellular Localization	Membrane; Single-pass type I membrane protein. [UniProt]

Images



ARG58700 anti-ADAM2 antibody WB image

Western blot: Rat testis, Mouse testis and MCF7 whole cell lysates stained with ARG58700 anti-ADAM2 antibody at 0.5 µg/ml dilution.