

ARG58746 anti-ZEB2 antibody

Package: 100 µl
Store at: -20°C

Summary

Product Description	Rabbit Polyclonal antibody recognizes ZEB2
Tested Reactivity	Hu, Ms, Rat
Tested Application	IHC-P, WB
Host	Rabbit
Clonality	Polyclonal
Isotype	IgG
Target Name	ZEB2
Species	Human
Immunogen	Recombinant fusion protein corresponding to aa. 1050-1214 of Human ZEB2 (NP_055610.1).
Conjugation	Un-conjugated
Alternate Names	Zinc finger E-box-binding homeobox 2; SIP-1; SIP1; SMADIP1; Smad-interacting protein 1; Zinc finger homeobox protein 1b; HSPC082; ZFHX1B

Application Instructions

Application table	Application	Dilution
	IHC-P	1:50 - 1:200
	WB	1:500 - 1:2000
Application Note	* The dilutions indicate recommended starting dilutions and the optimal dilutions or concentrations should be determined by the scientist.	

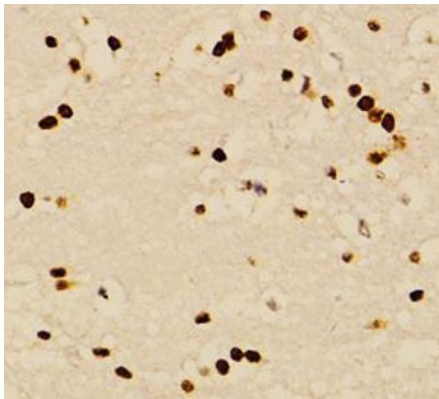
Properties

Form	Liquid
Purification	Affinity purified.
Buffer	PBS (pH 7.3), 0.02% Sodium azide and 50% Glycerol.
Preservative	0.02% Sodium azide
Stabilizer	50% Glycerol
Storage instruction	For continuous use, store undiluted antibody at 2-8°C for up to a week. For long-term storage, aliquot and store at -20°C. Storage in frost free freezers is not recommended. Avoid repeated freeze/thaw cycles. Suggest spin the vial prior to opening. The antibody solution should be gently mixed before use.
Note	For laboratory research only, not for drug, diagnostic or other use.

Bioinformation

Gene Symbol	ZEB2
Gene Full Name	zinc finger E-box binding homeobox 2
Background	The protein encoded by this gene is a member of the Zfh1 family of 2-handed zinc finger/homeodomain proteins. It is located in the nucleus and functions as a DNA-binding transcriptional repressor that interacts with activated SMADs. Mutations in this gene are associated with Hirschsprung disease/Mowat-Wilson syndrome. Alternatively spliced transcript variants have been found for this gene.[provided by RefSeq, Jan 2010]
Function	Transcriptional inhibitor that binds to DNA sequence 5'-CACCT-3' in different promoters. Represses transcription of E-cadherin. [UniProt]
Calculated Mw	136 kDa
PTM	Sumoylation on Lys-391 and Lys-866 is promoted by the E3 SUMO-protein ligase CBX4, and impairs interaction with CTBP1 and transcription repression activity. [UniProt]
Cellular Localization	Nucleus. [UniProt]

Images



ARG58746 anti-ZEB2 antibody IHC-P image

Immunohistochemistry: Paraffin-embedded Mouse brain stained with ARG58746 anti-ZEB2 antibody at 1:100 dilution.