

ARG58750
anti-CD223 / LAG3 antibody [1G4]Package: 25 µg
Store at: -20°C

Summary

Product Description	Mouse Monoclonal [1G4] antibody recognizes CD223 / LAG3
Tested Reactivity	Hu
Tested Application	ICC/IF, IHC-P, WB
Host	Mouse
Clonality	Monoclonal
Clone	1G4
Isotype	IgG1, kappa
Target Name	CD223 / LAG3
Species	Human
Immunogen	Extracellular domain of Human CD223 / LAG3.
Conjugation	Un-conjugated
Alternate Names	CD antigen CD223; CD223; Protein FDC; Lymphocyte activation gene 3 protein; LAG-3

Application Instructions

Application table	Application	Dilution
	ICC/IF	1 - 10 µg/ml
	IHC-P	5 µg/ml
	WB	0.25 µg/ml
Application Note	* The dilutions indicate recommended starting dilutions and the optimal dilutions or concentrations should be determined by the scientist.	
Positive Control	Human lymphoma tissue and spleen tissue.	
Observed Size	~ 60, 70, 80 kDa	

Properties

Form	Liquid
Purification	Purification with Protein A.
Buffer	PBS and 0.02% Sodium azide.
Preservative	0.02% Sodium azide
Concentration	1 mg/ml
Storage instruction	For continuous use, store undiluted antibody at 2-8°C for up to a week. For long-term storage, aliquot and store at -20°C or below. Storage in frost free freezers is not recommended. Avoid repeated freeze/thaw cycles. Suggest spin the vial prior to opening. The antibody solution should be gently mixed

before use.

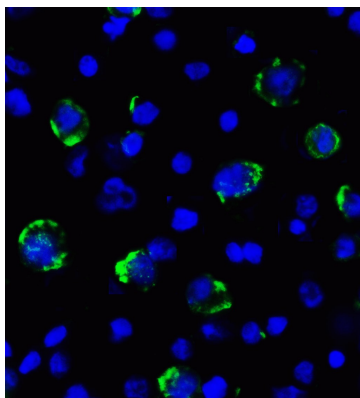
Note

For laboratory research only, not for drug, diagnostic or other use.

Bioinformation

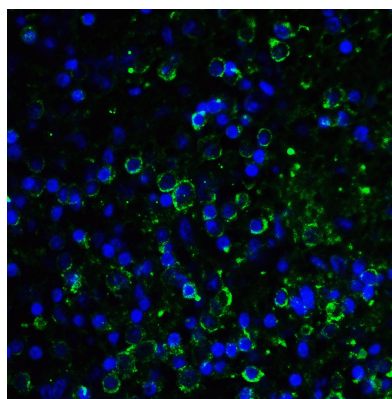
Gene Symbol	LAG3
Gene Full Name	lymphocyte-activation gene 3
Background	Lymphocyte-activation protein 3 belongs to Ig superfamily and contains 4 extracellular Ig-like domains. The LAG3 gene contains 8 exons. The sequence data, exon/intron organization, and chromosomal localization all indicate a close relationship of LAG3 to CD4. [provided by RefSeq, Jul 2008]
Function	Involved in lymphocyte activation. Binds to HLA class-II antigens. [UniProt]
Calculated Mw	57 kDa

Images



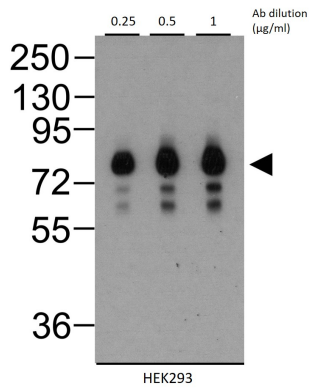
ARG58750 anti-CD223 / LAG3 antibody [1G4] IF image

Immunofluorescence: LAG3 over expressing HEK293 cells stained with ARG58750 anti-CD223 / LAG3 antibody [1G4] at 2 µg/ml dilution.



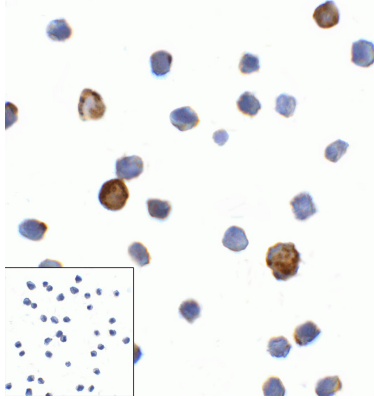
ARG58750 anti-CD223 / LAG3 antibody [1G4] IHC image

Immunohistochemistry: LAG3 over expressing Human spleen tissue stained with ARG58750 anti-CD223 / LAG3 antibody [1G4] at 10 µg/ml dilution.



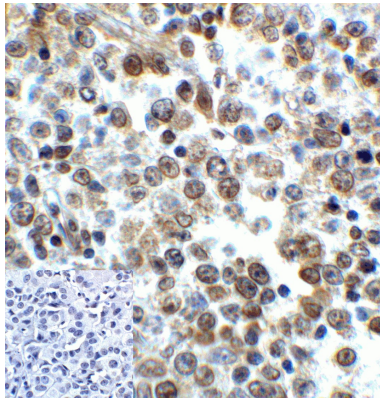
ARG58750 anti-CD223 / LAG3 antibody [1G4] WB image

Western blot: LAG3 over expressing HEK293 cells stained with ARG58750 anti-CD223 / LAG3 antibody [1G4] at 0.25, 0.5 and 1 µg/ml dilution.



ARG58750 anti-CD223 / LAG3 antibody [1G4] ICC image

Immunocytochemistry: LAG3 over expressing HEK293 cells stained with ARG58750 anti-CD223 / LAG3 antibody [1G4]. Lower left (control): Mouse IgG antibody at 1 µg/ml dilution.



ARG58750 anti-CD223 / LAG3 antibody [1G4] IHC-P image

Immunohistochemistry: Human lymphoma tissue stained with ARG58750 anti-CD223 / LAG3 antibody [1G4]. Lower left (control): Mouse IgG at 5 µg/ml dilution.