

ARG58794 anti-Glycerol kinase antibody

Package: 50 µg
Store at: -20°C

Summary

Product Description	Rabbit Polyclonal antibody recognizes Glycerol kinase
Tested Reactivity	Hu, Ms, Rat
Tested Application	IHC-P, WB
Host	Rabbit
Clonality	Polyclonal
Isotype	IgG
Target Name	Glycerol kinase
Species	Human
Immunogen	Recombinant protein corresponding to M1-S180 of Human Glycerol kinase.
Conjugation	Un-conjugated
Alternate Names	Glycerokinase; ATP:glycerol 3-phosphotransferase; Glycerol kinase; GK1; EC 2.7.1.30; GK; GKD

Application Instructions

Application table	Application	Dilution
	IHC-P	0.5 - 1 µg/ml
	WB	0.1 - 0.5 µg/ml
Application Note	IHC-P: Antigen Retrieval: Heat mediated was performed in Citrate buffer (pH 6.0) for 20 min. * The dilutions indicate recommended starting dilutions and the optimal dilutions or concentrations should be determined by the scientist.	

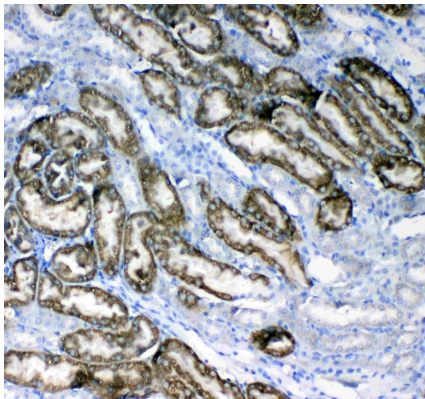
Properties

Form	Liquid
Purification	Affinity purification with immunogen.
Buffer	0.9% NaCl, 0.2% Na ₂ HPO ₄ , 0.05% Sodium azide and 4% Trehalose.
Preservative	0.05% Sodium azide
Stabilizer	4% Trehalose
Concentration	0.5 mg/ml
Storage instruction	For continuous use, store undiluted antibody at 2-8°C for up to a week. For long-term storage, aliquot and store at -20°C or below. Storage in frost free freezers is not recommended. Avoid repeated freeze/thaw cycles. Suggest spin the vial prior to opening. The antibody solution should be gently mixed before use.
Note	For laboratory research only, not for drug, diagnostic or other use.

Bioinformation

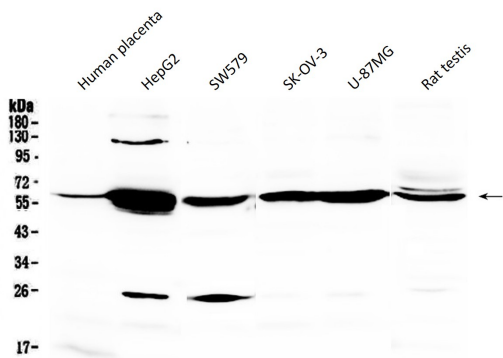
Gene Symbol	GK
Gene Full Name	glycerol kinase
Background	The protein encoded by this gene belongs to the FGGY kinase family. This protein is a key enzyme in the regulation of glycerol uptake and metabolism. It catalyzes the phosphorylation of glycerol by ATP, yielding ADP and glycerol-3-phosphate. Mutations in this gene are associated with glycerol kinase deficiency (GKD). Alternatively spliced transcript variants encoding different isoforms have been found for this gene. [provided by RefSeq, Mar 2011]
Function	Key enzyme in the regulation of glycerol uptake and metabolism. [UniProt]
Calculated Mw	61 kDa
Cellular Localization	Mitochondrion outer membrane; In sperm and fetal tissues, the majority of the enzyme is bound to mitochondria, but in adult tissues, such as liver found in the cytoplasm. [UniProt]

Images



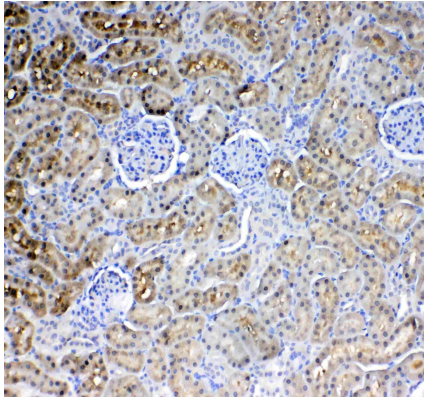
ARG58794 anti-Glycerol kinase antibody IHC-P image

Immunohistochemistry: Paraffin-embedded Mouse kidney tissue. Antigen Retrieval: Heat mediated was performed in Citrate buffer (pH 6.0, epitope retrieval solution) for 20 min. The tissue section was blocked with 10% goat serum. The tissue section was then stained with ARG58794 anti-Glycerol kinase antibody at 1 µg/ml, overnight at 4°C.



ARG58794 anti-Glycerol kinase antibody WB image

Western blot: 50 µg of samples under reducing conditions. Human placenta, HepG2, SW579, SK-OV-3, U-87MG whole cell lysates and Rat testis lysates stained with ARG58794 anti-Glycerol kinase antibody at 0.5 µg/ml, overnight at 4°C.



ARG58794 anti-Glycerol kinase antibody IHC-P image

Immunohistochemistry: Paraffin-embedded Rat kidney tissue.
Antigen Retrieval: Heat mediated was performed in Citrate buffer (pH 6.0, epitope retrieval solution) for 20 min. The tissue section was blocked with 10% goat serum. The tissue section was then stained with ARG58794 anti-Glycerol kinase antibody at 1 µg/ml, overnight at 4°C.