

ARG58804 anti-GJA5 / Connexin 40 antibody

Package: 50 µg
Store at: -20°C

Summary

Product Description	Rabbit Polyclonal antibody recognizes GJA5 / Connexin 40
Tested Reactivity	Ms, Rat
Predict Reactivity	Hu, Hm
Tested Application	IHC-P, WB
Host	Rabbit
Clonality	Polyclonal
Isotype	IgG
Target Name	GJA5 / Connexin 40
Species	Human
Immunogen	Synthetic peptide corresponding to aa. 341-358 of Human Connexin 40 (KRRLSKASSKARSDDLVS).
Conjugation	Un-conjugated
Alternate Names	Cx40; CX40; Connexin-40; Gap junction alpha-5 protein; ATFB11

Application Instructions

Application table	Application	Dilution
	IHC-P	0.5 - 1 µg/ml
	WB	0.1 - 0.5 µg/ml
Application Note	IHC-P: Antigen Retrieval: By heat mediation. * The dilutions indicate recommended starting dilutions and the optimal dilutions or concentrations should be determined by the scientist.	

Properties

Form	Liquid
Purification	Affinity purification with immunogen.
Buffer	0.9% NaCl, 0.2% Na ₂ HPO ₄ , 0.05% Thimerosal, 0.05% Sodium azide and 5% BSA.
Preservative	0.05% Thimerosal and 0.05% Sodium azide
Stabilizer	5% BSA
Concentration	0.5 mg/ml
Storage instruction	For continuous use, store undiluted antibody at 2-8°C for up to a week. For long-term storage, aliquot and store at -20°C or below. Storage in frost free freezers is not recommended. Avoid repeated freeze/thaw cycles. Suggest spin the vial prior to opening. The antibody solution should be gently mixed before use.

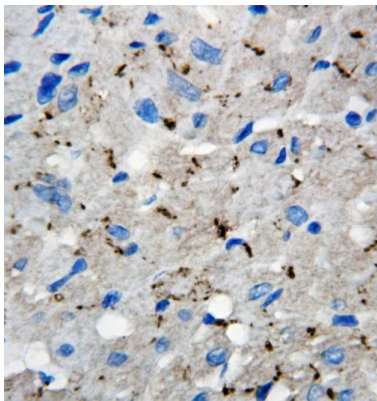
Note

For laboratory research only, not for drug, diagnostic or other use.

Bioinformation

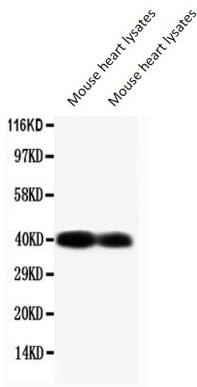
Gene Symbol	GJA5
Gene Full Name	gap junction protein, alpha 5, 40kDa
Background	This gene is a member of the connexin gene family. The encoded protein is a component of gap junctions, which are composed of arrays of intercellular channels that provide a route for the diffusion of low molecular weight materials from cell to cell. Mutations in this gene may be associated with atrial fibrillation. Alternatively spliced transcript variants encoding the same isoform have been described. [provided by RefSeq, Jul 2008]
Function	One gap junction consists of a cluster of closely packed pairs of transmembrane channels, the connexons, through which materials of low MW diffuse from one cell to a neighboring cell. [UniProt]
Calculated Mw	40 kDa
Cellular Localization	Cell membrane; Multi-pass membrane protein. Cell junction, gap junction. [UniProt]

Images



ARG58804 anti-GJA5 / Connexin 40 antibody IHC-P image

Immunohistochemistry: Paraffin-embedded Rat cardiac muscle stained with ARG58804 anti-GJA5 / Connexin 40 antibody.



ARG58804 anti-GJA5 / Connexin 40 antibody WB image

Western blot: Mouse heart lysates (both two lanes) stained with ARG58804 anti-GJA5 / Connexin 40 antibody.