

ARG58825 anti-GJA3 / Connexin 46 antibody

Package: 50 µg
Store at: -20°C

Summary

Product Description	Rabbit Polyclonal antibody recognizes GJA3 / Connexin 46
Tested Reactivity	Hu, Ms, Rat
Tested Application	WB
Host	Rabbit
Clonality	Polyclonal
Isotype	IgG
Target Name	GJA3 / Connexin 46
Species	Human
Immunogen	Synthetic peptide corresponding to aa. 89-118 of Human GJA3 (TLIYLGHVLHIVRMEKKKEREELKRE).
Conjugation	Un-conjugated
Alternate Names	Cx46; CX46; CZP3; CTRCT14; Gap junction alpha-3 protein; Connexin-46

Application Instructions

Application table	Application	Dilution
	WB	0.1 - 0.5 µg/ml
Application Note	* The dilutions indicate recommended starting dilutions and the optimal dilutions or concentrations should be determined by the scientist.	

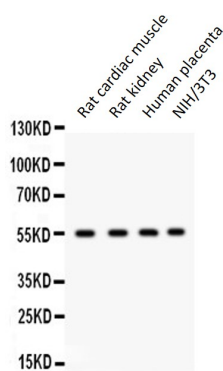
Properties

Form	Liquid
Purification	Affinity purification with immunogen.
Buffer	0.9% NaCl, 0.2% Na ₂ HPO ₄ , 0.05% Sodium azide and 5% BSA.
Preservative	0.05% Sodium azide
Stabilizer	5% BSA
Concentration	0.5 mg/ml
Storage instruction	For continuous use, store undiluted antibody at 2-8°C for up to a week. For long-term storage, aliquot and store at -20°C or below. Storage in frost free freezers is not recommended. Avoid repeated freeze/thaw cycles. Suggest spin the vial prior to opening. The antibody solution should be gently mixed before use.
Note	For laboratory research only, not for drug, diagnostic or other use.

Bioinformation

Gene Symbol	GJA3
Gene Full Name	gap junction protein, alpha 3, 46kDa
Background	The protein encoded by this gene is a connexin and is a component of lens fiber gap junctions. Defects in this gene are a cause of zonular pulverulent cataract type 3 (CZP3). [provided by RefSeq, Jan 2010]
Function	One gap junction consists of a cluster of closely packed pairs of transmembrane channels, the connexons, through which materials of low MW diffuse from one cell to a neighboring cell. [UniProt]
Calculated Mw	47 kDa
Cellular Localization	Cell membrane; Multi-pass membrane protein. Cell junction, gap junction. [UniProt]

Images



ARG58825 anti-GJA3 / Connexin 46 antibody WB image

Western blot: 50 µg of Rat cardiac muscle, Rat kidney, Human placenta and 40 µg of NIH/3T3 whole cell lysates stained with ARG58825 anti-GJA3 / Connexin 46 antibody at 0.5 µg/ml dilution.