

## ARG58832 anti-LOXL1 antibody

Package: 50 µg  
Store at: -20°C

### Summary

Product Description	Rabbit Polyclonal antibody recognizes LOXL1
Tested Reactivity	Hu
Predict Reactivity	Hm
Tested Application	IHC-P, WB
Host	Rabbit
Clonality	Polyclonal
Isotype	IgG
Target Name	LOXL1
Species	Human
Immunogen	Synthetic peptide corresponding to aa. 397-425 of Human LOXL1 (AEEKCLASTAYAPEATDYDVRVLLRFPQR).
Conjugation	Un-conjugated
Alternate Names	Lysyl oxidase-like protein 1; Lysyl oxidase homolog 1; LOXL; LOL; EC 1.4.3.-

### Application Instructions

Application table	Application	Dilution
	IHC-P	0.5 - 1 µg/ml
	WB	0.1 - 0.5 µg/ml
Application Note	IHC-P: Antigen Retrieval: By heat mediation. * The dilutions indicate recommended starting dilutions and the optimal dilutions or concentrations should be determined by the scientist.	

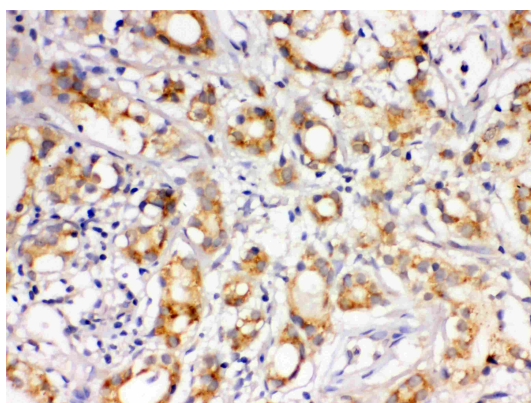
### Properties

Form	Liquid
Purification	Affinity purification with immunogen.
Buffer	0.9% NaCl, 0.2% Na <sub>2</sub> HPO <sub>4</sub> , 0.05% Sodium azide and 5% BSA.
Preservative	0.05% Sodium azide
Stabilizer	5% BSA
Concentration	0.5 mg/ml
Storage instruction	For continuous use, store undiluted antibody at 2-8°C for up to a week. For long-term storage, aliquot and store at -20°C or below. Storage in frost free freezers is not recommended. Avoid repeated freeze/thaw cycles. Suggest spin the vial prior to opening. The antibody solution should be gently mixed before use.

## Bioinformation

Gene Symbol	LOXL1
Gene Full Name	lysyl oxidase-like 1
Background	This gene encodes a member of the lysyl oxidase gene family. The prototypic member of the family is essential to the biogenesis of connective tissue, encoding an extracellular copper-dependent amine oxidase that catalyses the first step in the formation of crosslinks in collagens and elastin. A highly conserved amino acid sequence at the C-terminus end appears to be sufficient for amine oxidase activity, suggesting that each family member may retain this function. The N-terminus is poorly conserved and may impart additional roles in developmental regulation, senescence, tumor suppression, cell growth control, and chemotaxis to each member of the family. [provided by RefSeq, Jul 2008]
Function	Active on elastin and collagen substrates. [UniProt]
Calculated Mw	63 kDa
PTM	The lysine tyrosylquinone cross-link (LTQ) is generated by condensation of the epsilon-amino group of a lysine with a topaquinone produced by oxidation of tyrosine. [UniProt]
Cellular Localization	Secreted, extracellular space. [UniProt]

## Images



ARG58832 anti-LOXL1 antibody IHC-P image

Immunohistochemistry: Paraffin-embedded Human prostatic cancer stained with ARG58832 anti-LOXL1 antibody.



ARG58832 anti-LOXL1 antibody WB image

Western blot: 40 µg of A549 and HeLa cell lysates stained with ARG58832 anti-LOXL1 antibody at 0.5 µg/ml dilution.