

ARG58847 anti-GLO1 antibody

Package: 100 µl
Store at: -20°C

Summary

Product Description	Rabbit Polyclonal antibody recognizes GLO1
Tested Reactivity	Hu, Ms
Tested Application	ICC/IF, IHC-P, WB
Host	Rabbit
Clonality	Polyclonal
Isotype	IgG
Target Name	GLO1
Species	Human
Immunogen	Recombinant fusion protein corresponding to aa. 1-184 of Human GLO1 (NP_006699.2).
Conjugation	Un-conjugated
Alternate Names	GLO1; Glyoxalase I; Lactoylglutathione Lyase; GLOD1; S-D-Lactoylglutathione Methylglyoxal Lyase; Ketone-Aldehyde Mutase; Methylglyoxalase; Aldoketomutase; EC 4.4.1.5; Glx I; Epididymis Secretory Protein Li 74; Glyoxalase Domain Containing 1; Lactoyl Glutathione Lyase; HEL-S-74; GLYI

Application Instructions

Application table	Application	Dilution
	ICC/IF	1:50 - 1:200
	IHC-P	1:50 - 1:200
	WB	1:500 - 1:2000
Application Note	* The dilutions indicate recommended starting dilutions and the optimal dilutions or concentrations should be determined by the scientist.	
Positive Control	22Rv1	
Observed Size	21 kDa	

Properties

Form	Liquid
Purification	Affinity purified.
Buffer	PBS (pH 7.3), 0.02% Sodium azide and 50% Glycerol.
Preservative	0.02% Sodium azide
Stabilizer	50% Glycerol
Storage instruction	For continuous use, store undiluted antibody at 2-8°C for up to a week. For long-term storage, aliquot and store at -20°C. Storage in frost free freezers is not recommended. Avoid repeated freeze/thaw cycles. Suggest spin the vial prior to opening. The antibody solution should be gently mixed before use.

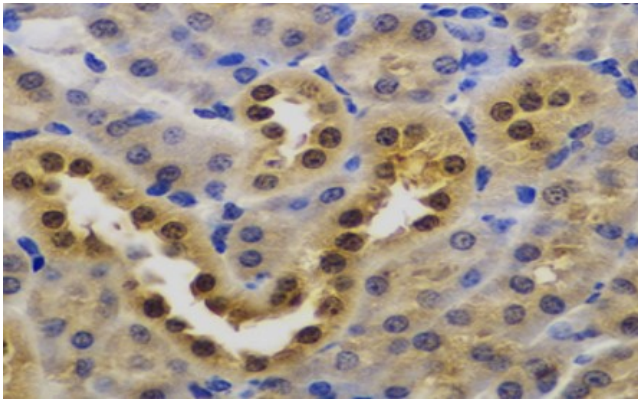
Note

For laboratory research only, not for drug, diagnostic or other use.

Bioinformation

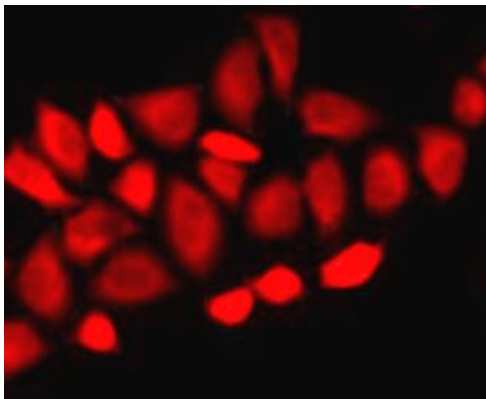
Gene Symbol	GLO1
Gene Full Name	glyoxalase I
Background	The enzyme encoded by this gene is responsible for the catalysis and formation of S-lactoyl-glutathione from methylglyoxal condensation and reduced glutathione. Glyoxalase I is linked to HLA and is localized to 6p21.3-p21.1, between HLA and the centromere. [provided by RefSeq, Jul 2008]
Function	Catalyzes the conversion of hemimercaptal, formed from methylglyoxal and glutathione, to S-lactoylglutathione. [UniProt]
Calculated Mw	21 kDa
PTM	Acetylation, Disulfide bond, Glutathionylation, Phosphoprotein. [UniProt]

Images



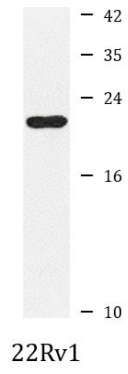
ARG58847 anti-GLO1 antibody IHC-P image

Immunohistochemistry: Mouse kidney stained with ARG58847 anti-GLO1 antibody at 1:300 dilution.



ARG58847 anti-GLO1 antibody ICC/IF image

Immunofluorescence: A-549 cells stained with ARG58847 anti-GLO1 antibody.



ARG58847 anti-GLO1 antibody WB image

Western blot: 25 µg of 22Rv1 cell lysate stained with ARG58847 anti-GLO1 antibody at 1:1000 dilution.