

## ARG58924 anti-ALT / Alanine Transaminase antibody

Package: 100 µl  
Store at: -20°C

### Summary

Product Description	Rabbit Polyclonal antibody recognizes ALT / Alanine Transaminase
Tested Reactivity	Hu, Ms, Rat
Predict Reactivity	Bov
Tested Application	IHC-P, WB
Host	Rabbit
Clonality	Polyclonal
Isotype	IgG
Target Name	ALT / Alanine Transaminase
Species	Human
Immunogen	KLH-conjugated synthetic peptide corresponding to aa. 118-144 of Human ALT / Alanine Transaminase.
Conjugation	Un-conjugated
Alternate Names	Glutamate pyruvate transaminase 1; AAT1; GPT1; GPT 1; Glutamic--alanine transaminase 1; Glutamic--pyruvic transaminase 1; Alanine aminotransferase 1; ALT1; EC 2.6.1.2

### Application Instructions

Application table	Application	Dilution
	IHC-P	1:100
	WB	1:1000
Application Note	* The dilutions indicate recommended starting dilutions and the optimal dilutions or concentrations should be determined by the scientist.	
Positive Control	Mouse liver	

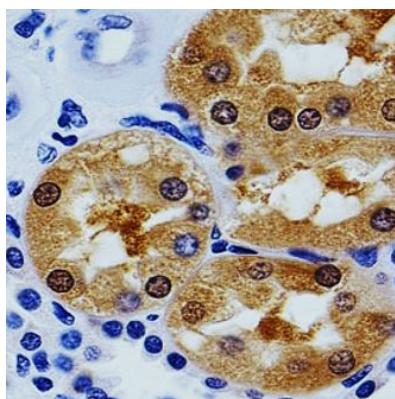
### Properties

Form	Liquid
Purification	Saturated Ammonium Sulfate (SAS) precipitation followed by dialysis against PBS.
Buffer	PBS and 0.09% (W/V) Sodium azide.
Preservative	0.09% (W/V) Sodium azide.
Storage instruction	For continuous use, store undiluted antibody at 2-8°C for up to a week. For long-term storage, aliquot and store at -20°C or below. Storage in frost free freezers is not recommended. Avoid repeated freeze/thaw cycles. Suggest spin the vial prior to opening. The antibody solution should be gently mixed before use.
Note	For laboratory research only, not for drug, diagnostic or other use.

## Bioinformation

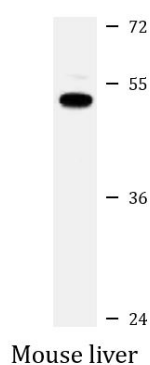
Gene Symbol	GPT
Gene Full Name	glutamic-pyruvate transaminase (alanine aminotransferase)
Background	This gene encodes cytosolic alanine aminotransaminase 1 (ALT1); also known as glutamate-pyruvate transaminase 1. This enzyme catalyzes the reversible transamination between alanine and 2-oxoglutarate to generate pyruvate and glutamate and, therefore, plays a key role in the intermediary metabolism of glucose and amino acids. Serum activity levels of this enzyme are routinely used as a biomarker of liver injury caused by drug toxicity, infection, alcohol, and steatosis. A related gene on chromosome 16 encodes a putative mitochondrial alanine aminotransaminase.[provided by RefSeq, Nov 2009]
Function	Catalyzes the reversible transamination between alanine and 2-oxoglutarate to form pyruvate and glutamate. Participates in cellular nitrogen metabolism and also in liver gluconeogenesis starting with precursors transported from skeletal muscles (By similarity). [UniProt]
Calculated Mw	55 kDa
Cellular Localization	Cytoplasm. [UniProt]

## Images



ARG58924 anti-ALT / Alanine Transaminase antibody IHC-P image

Immunohistochemistry: Paraffin-embedded Human kidney tissue stained with ARG58924 anti-ALT / Alanine Transaminase antibody at 1:100 dilution.



ARG58924 anti-ALT / Alanine Transaminase antibody WB image

Western blot: 35 µg of Mouse liver lysate stained with ARG58924 anti-ALT / Alanine Transaminase antibody.