

ARG58932 anti-PLA2G4D antibody

Package: 100 µl
Store at: -20°C

Summary

Product Description	Rabbit Polyclonal antibody recognizes PLA2G4D
Tested Reactivity	Hu
Tested Application	WB
Host	Rabbit
Clonality	Polyclonal
Isotype	IgG
Target Name	PLA2G4D
Species	Human
Immunogen	KLH-conjugated synthetic peptide corresponding to aa. 754-786 of Human PLA2G4D.
Conjugation	Un-conjugated
Alternate Names	cPLA2-delta; Cytosolic phospholipase A2 delta; EC 3.1.1.4; Phospholipase A2 group IVD; cPLA2delta

Application Instructions

Application table	Application	Dilution
	WB	1:2000
Application Note	* The dilutions indicate recommended starting dilutions and the optimal dilutions or concentrations should be determined by the scientist.	
Positive Control	A431	

Properties

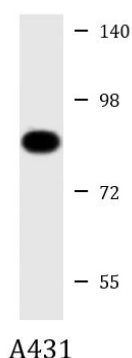
Form	Liquid
Purification	Purification with Protein A and immunogen peptide.
Buffer	PBS and 0.09% (W/V) Sodium azide.
Preservative	0.09% (W/V) Sodium azide
Storage instruction	For continuous use, store undiluted antibody at 2-8°C for up to a week. For long-term storage, aliquot and store at -20°C or below. Storage in frost free freezers is not recommended. Avoid repeated freeze/thaw cycles. Suggest spin the vial prior to opening. The antibody solution should be gently mixed before use.
Note	For laboratory research only, not for drug, diagnostic or other use.

Bioinformation

Gene Symbol	PLA2G4D
-------------	---------

Gene Full Name	phospholipase A2, group IVD (cytosolic)
Background	The phospholipase A2 enzyme family, including PLA2G4D, catalyze the hydrolysis of glycerophospholipids at the sn-2 position and then liberate free fatty acids and lysophospholipids (Chiba et al., 2004 [PubMed 14709560]).[supplied by OMIM, Jun 2009]
Function	Calcium-dependent phospholipase A2 that selectively hydrolyzes glycerophospholipids in the sn-2 position. Not arachidonic acid-specific but has linoleic acid-specific activity. May play a role in inflammation in psoriatic lesions. [UniProt]
Calculated Mw	92 kDa
Cellular Localization	Cytoplasm, cytosol. Membrane; Peripheral membrane protein; Cytoplasmic side. Note=Translocates to perinuclear membranes that may correspond to endoplasmic reticulum or Golgi in a calcium-dependent fashion. [UniProt]

Images



ARG58932 anti-PLA2G4D antibody WB image

Western blot: 20 µg of A431 cell lysate stained with ARG58932 anti-PLA2G4D antibody at 1:2000 dilution.