

## ARG58937 anti-GPR6 antibody

Package: 50 µl  
Store at: -20°C

### Summary

Product Description	Rabbit Polyclonal antibody recognizes GPR6
Tested Reactivity	Hu
Predict Reactivity	Ms, Rat, Cow
Tested Application	IHC-P, WB
Host	Rabbit
Clonality	Polyclonal
Isotype	IgG
Target Name	GPR6
Species	Human
Immunogen	Synthetic peptide around the N-terminal region of Human GPR6. (within the following region: NASAASLNDQVVVVAAEGAAAAATAAGGPDTEGWGPPAAALGAGGGAN)
Conjugation	Un-conjugated
Alternate Names	G-protein coupled receptor 6; Sphingosine 1-phosphate receptor GPR6

### Application Instructions

Predict Reactivity Note	Predicted Homology Based On Immunogen Sequence: Cow: 86%; Mouse: 93%; Rat: 93%						
Application table	<table> <tr> <th>Application</th><th>Dilution</th></tr> <tr> <td>IHC-P</td><td>5 µg/ml</td></tr> <tr> <td>WB</td><td>0.2 - 1 µg/ml</td></tr> </table>	Application	Dilution	IHC-P	5 µg/ml	WB	0.2 - 1 µg/ml
Application	Dilution						
IHC-P	5 µg/ml						
WB	0.2 - 1 µg/ml						
Application Note	* The dilutions indicate recommended starting dilutions and the optimal dilutions or concentrations should be determined by the scientist.						
Positive Control	Human placenta						

### Properties

Form	Liquid
Purification	Affinity purified.
Buffer	PBS, 0.09% (w/v) Sodium azide and 2% Sucrose.
Preservative	0.09% (w/v) Sodium azide
Stabilizer	2% Sucrose
Concentration	Batch dependent: 0.5 - 1 mg/ml
Storage instruction	For continuous use, store undiluted antibody at 2-8°C for up to a week. For long-term storage, aliquot and store at -20°C or below. Storage in frost free freezers is not recommended. Avoid repeated

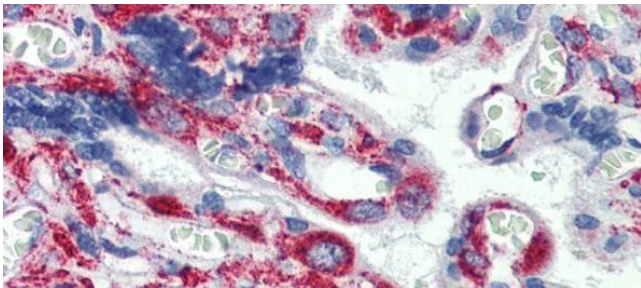
freeze/thaw cycles. Suggest spin the vial prior to opening. The antibody solution should be gently mixed before use.

**Note** For laboratory research only, not for drug, diagnostic or other use.

## Bioinformation

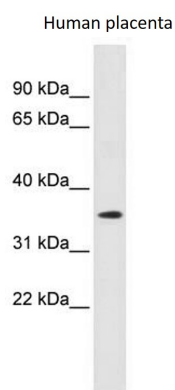
Gene Symbol	GPR6
Gene Full Name	G protein-coupled receptor 6
Function	Orphan receptor with constitutive G(s) signaling activity that activate cyclic AMP. Promotes neurite outgrowth and blocks myelin inhibition in neurons (By similarity). [UniProt]
Calculated Mw	38 kDa
Cellular Localization	Cell membrane; Multi-pass membrane protein. Note=Detected in the intracellular compartments. It is currently unclear whether this is a cell surface or intracellular receptor. [UniProt]

## Images



ARG58937 anti-GPR6 antibody IHC-P image

Immunohistochemistry: Paraffin-embedded Human placenta stained with ARG58937 anti-GPR6 antibody at 5 µg/ml dilution.



ARG58937 anti-GPR6 antibody WB image

Western blot: Human placenta lysate stained with ARG58937 anti-GPR6 antibody at 0.2 - 1 µg/ml dilution.