

## ARG58945 anti-VE Cadherin antibody

Package: 100 µl  
Store at: -20°C

### Summary

Product Description	Rabbit Polyclonal antibody recognizes VE Cadherin
Tested Reactivity	Hu
Tested Application	FACS, WB
Host	Rabbit
Clonality	Polyclonal
Isotype	IgG
Target Name	VE Cadherin
Species	Human
Immunogen	KLH-conjugated synthetic peptide within aa. 106-134 of Human VE Cadherin.
Conjugation	Un-conjugated
Alternate Names	7B4 antigen; 7B4; Cadherin-5; VE-cadherin; CD144; CD antigen CD144; Vascular endothelial cadherin

### Application Instructions

Application table	Application	Dilution
	FACS	1:25
	WB	1:2000
Application Note	* The dilutions indicate recommended starting dilutions and the optimal dilutions or concentrations should be determined by the scientist.	
Positive Control	293T/17	

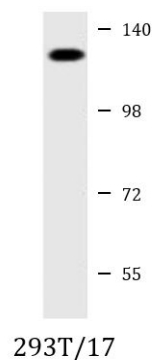
### Properties

Form	Liquid
Purification	Purification with Protein A and immunogen peptide.
Buffer	PBS and 0.09% (W/V) Sodium azide.
Preservative	0.09% (W/V) Sodium azide
Storage instruction	For continuous use, store undiluted antibody at 2-8°C for up to a week. For long-term storage, aliquot and store at -20°C or below. Storage in frost free freezers is not recommended. Avoid repeated freeze/thaw cycles. Suggest spin the vial prior to opening. The antibody solution should be gently mixed before use.
Note	For laboratory research only, not for drug, diagnostic or other use.

### Bioinformation

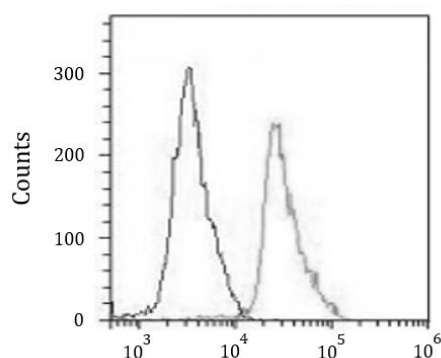
Gene Symbol	CDH5
Gene Full Name	cadherin 5, type 2 (vascular endothelium)
Background	This gene is a classical cadherin from the cadherin superfamily and is located in a six-cadherin cluster in a region on the long arm of chromosome 16 that is involved in loss of heterozygosity events in breast and prostate cancer. The encoded protein is a calcium-dependent cell-cell adhesion glycoprotein comprised of five extracellular cadherin repeats, a transmembrane region and a highly conserved cytoplasmic tail. Functioning as a classic cadherin by imparting to cells the ability to adhere in a homophilic manner, the protein may play an important role in endothelial cell biology through control of the cohesion and organization of the intercellular junctions. An alternative splice variant has been described but its full length sequence has not been determined. [provided by RefSeq, Jul 2008]
Function	Cadherins are calcium-dependent cell adhesion proteins. They preferentially interact with themselves in a homophilic manner in connecting cells; cadherins may thus contribute to the sorting of heterogeneous cell types. This cadherin may play a important role in endothelial cell biology through control of the cohesion and organization of the intercellular junctions. It associates with alpha-catenin forming a link to the cytoskeleton. Acts in concert with KRIT1 to establish and maintain correct endothelial cell polarity and vascular lumen. These effects are mediated by recruitment and activation of the Par polarity complex and RAP1B. Required for activation of PRKCZ and for the localization of phosphorylated PRKCZ, PARD3, TIAM1 and RAP1B to the cell junction. [UniProt]
Calculated Mw	88 kDa (unmodified); 90 - 140 kDa (glycosylated)
PTM	Phosphorylated on tyrosine residues by KDR/VEGFR-2. Dephosphorylated by PTPRB (By similarity).  O-glycosylated. [UniProt]

## Images



ARG58945 anti-VE Cadherin antibody WB image

Western blot: 20 µg of 293T/17 cell lysate stained with ARG58945 anti-VE Cadherin antibody at 1:2000 dilution.



ARG58945 anti-VE Cadherin antibody FACS image

Flow Cytometry: Jurkat cells were fixed with 2% paraformaldehyde (10 min). The cells were then incubated in 2% BSA to block non-specific protein-protein interactions and stained with ARG58945 anti-VE Cadherin antibody (right histogram) at 1:25 dilution, 60 min at 37°C, followed by DyLight® 488 labelled secondary antibody. Isotype control antibody (left histogram) was Rabbit IgG (1 µg/1x10<sup>6</sup> cells) used under the same conditions. Acquisition of > 10000 events was performed.