

ARG58955 anti-TMPO / Lap2 antibody

Package: 100 µl
Store at: -20°C

Summary

Product Description	Rabbit Polyclonal antibody recognizes TMPO / Lap2
Tested Reactivity	Hu, Ms, Rat
Tested Application	ICC/IF, IHC-P, WB
Host	Rabbit
Clonality	Polyclonal
Isotype	IgG
Target Name	TMPO / Lap2
Species	Human
Immunogen	Recombinant fusion protein corresponding to aa. 1-410 of Human TMPO (NP_001027454.1).
Conjugation	Un-conjugated
Alternate Names	Splenin; Lamina-associated polypeptide 2, isoform alpha; Thymopoietin isoform alpha; PRO0868; CMD1T; LAP2; TP; TP5; TP alpha; Thymopoietin-related peptide isoform alpha; LEMD4; TPRP isoform alpha

Application Instructions

Application table	Application	Dilution
	ICC/IF	1:50 - 1:200
	IHC-P	1:50 - 1:200
	WB	1:500 - 1:2000
Application Note	* The dilutions indicate recommended starting dilutions and the optimal dilutions or concentrations should be determined by the scientist.	
Positive Control	293T	
Observed Size	~ 55 kDa	

Properties

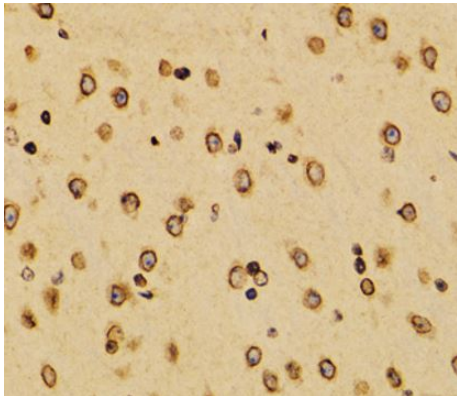
Form	Liquid
Purification	Affinity purified.
Buffer	PBS (pH 7.3), 0.02% Sodium azide and 50% Glycerol.
Preservative	0.02% Sodium azide
Stabilizer	50% Glycerol
Storage instruction	For continuous use, store undiluted antibody at 2-8°C for up to a week. For long-term storage, aliquot and store at -20°C. Storage in frost free freezers is not recommended. Avoid repeated freeze/thaw cycles. Suggest spin the vial prior to opening. The antibody solution should be gently mixed before use.

Note For laboratory research only, not for drug, diagnostic or other use.

Bioinformation

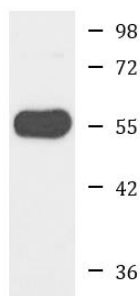
Gene Symbol	TMPO
Gene Full Name	thymopoietin
Background	The protein encoded by this gene resides in the nucleus and may play a role in the assembly of the nuclear lamina, and thus help maintain the structural organization of the nuclear envelope. It may function as a receptor for the attachment of lamin filaments to the inner nuclear membrane. Mutations in this gene are associated with dilated cardiomyopathy. Alternatively spliced transcript variants encoding different isoforms have been noted for this gene. [provided by RefSeq, May 2010]
Function	May be involved in the structural organization of the nucleus and in the post-mitotic nuclear assembly. Plays an important role, together with LMNA, in the nuclear anchorage of RB1. TP and TP5 may play a role in T-cell development and function. TP5 is an immunomodulating pentapeptide. [UniProt]
Calculated Mw	Isoform Alpha: 75 kDa Isoform Beta: 51 kDa Isoform Gamma: 39 kDa
PTM	Mitosis-specific phosphorylation specifically abolishes its binding to lamin B and chromosomes. Citruillinated by PADI4. [UniProt]
Cellular Localization	Nuclear membrane. [UniProt]

Images



ARG58955 anti-TMPO / Lap2 antibody IHC-P image

Immunohistochemistry: Paraffin-embedded Mouse brain stained with ARG58955 anti-TMPO / Lap2 antibody at 1:100 dilution.



293T

ARG58955 anti-TMPO / Lap2 antibody WB image

Western blot: 25 µg of 293T cell lysate stained with ARG58955 anti-TMPO / Lap2 antibody at 1:1000 dilution.