

ARG58983 anti-NUCB2 / Nucleobindin 2 antibody

Package: 100 µl
Store at: -20°C

Summary

Product Description	Rabbit Polyclonal antibody recognizes NUCB2 / Nucleobindin 2
Tested Reactivity	Hu, Rat
Tested Application	WB
Host	Rabbit
Clonality	Polyclonal
Isotype	IgG
Target Name	NUCB2 / Nucleobindin 2
Species	Human
Immunogen	Recombinant fusion protein corresponding to aa. 321-420 of Human NUCB2 / Nucleobindin 2 (NP_005004.1).
Conjugation	Un-conjugated
Alternate Names	HEL-S-109; NEFA; Nucleobindin-2; Gastric cancer antigen Zg4; Prepronesfatin; DNA-binding protein NEFA

Application Instructions

Application table	Application	Dilution
	WB	1:500 - 1:2000
Application Note	* The dilutions indicate recommended starting dilutions and the optimal dilutions or concentrations should be determined by the scientist.	
Positive Control	HeLa	
Observed Size	50 kDa	

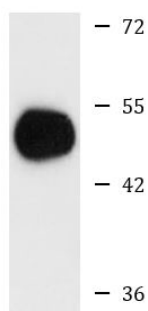
Properties

Form	Liquid
Purification	Affinity purified.
Buffer	PBS (pH 7.3), 0.02% Sodium azide and 50% Glycerol.
Preservative	0.02% Sodium azide
Stabilizer	50% Glycerol
Storage instruction	For continuous use, store undiluted antibody at 2-8°C for up to a week. For long-term storage, aliquot and store at -20°C. Storage in frost free freezers is not recommended. Avoid repeated freeze/thaw cycles. Suggest spin the vial prior to opening. The antibody solution should be gently mixed before use.
Note	For laboratory research only, not for drug, diagnostic or other use.

Bioinformation

Gene Symbol	NUCB2
Gene Full Name	nucleobindin 2
Background	This gene encodes a protein with a suggested role in calcium level maintenance, eating regulation in the hypothalamus, and release of tumor necrosis factor from vascular endothelial cells. This protein binds calcium and has EF-folding domains. [provided by RefSeq, Oct 2011]
Function	Calcium-binding protein. May have a role in calcium homeostasis. Nesfatin-1: Anorexigenic peptide, seems to play an important role in hypothalamic pathways regulating food intake and energy homeostasis, acting in a leptin-independent manner. May also exert hypertensive roles and modulate blood pressure through directly acting on peripheral arterial resistance (By similarity). [UniProt]
Calculated Mw	50 kDa
Cellular Localization	Golgi apparatus, Membrane, Peripheral membrane protein, Cytoplasm, Secreted, Endoplasmic reticulum, Nucleus envelope. [UniProt]

Images



HeLa

ARG58983 anti-NUCB2 (Nucleobindin 2) antibody WB image

Western blot: 25 µg of HeLa cell lysate stained with ARG58983 anti-NUCB2 (Nucleobindin 2) antibody at 1:3000 dilution.