

ARG58999 anti-OTC / Ornithine Carbamoyltransferase antibody

Package: 100 µl
Store at: -20°C

Summary

Product Description	Rabbit Polyclonal antibody recognizes OTC / Ornithine Carbamoyltransferase
Tested Reactivity	Hu
Tested Application	IHC-P, WB
Host	Rabbit
Clonality	Polyclonal
Isotype	IgG
Target Name	OTC / Ornithine Carbamoyltransferase
Species	Human
Immunogen	KLH-conjugated synthetic peptide corresponding to aa. 71-98 of Human OTC / Ornithine Carbamoyltransferase.
Conjugation	Un-conjugated
Alternate Names	Ornithine transcarbamylase; OCTD; EC 2.1.3.3; Ornithine carbamoyltransferase, mitochondrial; OTCase

Application Instructions

Application table	Application	Dilution
	IHC-P	1:10 - 1:50
	WB	1:1000
Application Note	* The dilutions indicate recommended starting dilutions and the optimal dilutions or concentrations should be determined by the scientist.	
Positive Control	Human liver	

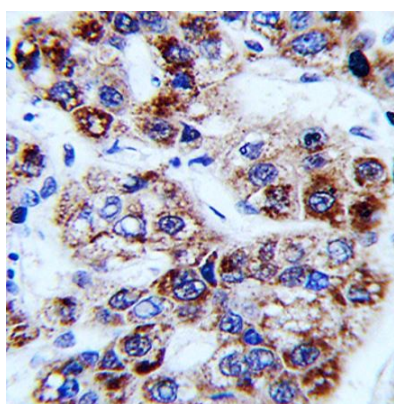
Properties

Form	Liquid
Purification	Purification with Protein A and immunogen peptide.
Buffer	PBS and 0.09% (W/V) Sodium azide.
Preservative	0.09% (W/V) Sodium azide
Storage instruction	For continuous use, store undiluted antibody at 2-8°C for up to a week. For long-term storage, aliquot and store at -20°C or below. Storage in frost free freezers is not recommended. Avoid repeated freeze/thaw cycles. Suggest spin the vial prior to opening. The antibody solution should be gently mixed before use.
Note	For laboratory research only, not for drug, diagnostic or other use.

Bioinformation

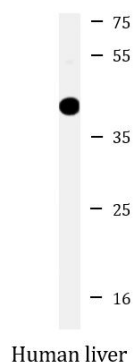
Gene Symbol	OTC
Gene Full Name	ornithine carbamoyltransferase
Background	This nuclear gene encodes a mitochondrial matrix enzyme. Missense, nonsense, and frameshift mutations in this enzyme lead to ornithine transcarbamylase deficiency, which causes hyperammonemia. Since the gene for this enzyme maps close to that for Duchenne muscular dystrophy, it may play a role in that disease also. [provided by RefSeq, Jul 2008]
Calculated Mw	40 kDa
PTM	Acetylation at Lys-88 negatively regulates ornithine carbamoyltransferase activity in response to nutrient signals. [UniProt]
Cellular Localization	Mitochondrion matrix. [UniProt]

Images



ARG58999 anti-OTC / Ornithine Carbamoyltransferase antibody IHC-P image

Immunohistochemistry: Formalin-fixed and paraffin-embedded Human hepatocarcinoma stained with ARG58999 anti-OTC / Ornithine Carbamoyltransferase antibody.



Human liver

ARG58999 anti-OTC / Ornithine Carbamoyltransferase antibody WB image

Western blot: 20 µg of Human liver lysate stained with ARG58999 anti-OTC / Ornithine Carbamoyltransferase antibody at 1:1000 dilution.