

## ARG59010 anti-NEDD8 antibody

Package: 50 µg  
Store at: -20°C

### Summary

Product Description	Rabbit Polyclonal antibody recognizes NEDD8
Tested Reactivity	Hu, Ms, Rat
Tested Application	FACS, ICC/IF, IHC-P, WB
Host	Rabbit
Clonality	Polyclonal
Isotype	IgG
Target Name	NEDD8
Species	Human
Immunogen	Synthetic peptide corresponding to aa. 20-60 of Human NEDD8 (TDKVERIKERVEEKEGIPPQQRLIYSGKQMNDKTAADYK).
Conjugation	Un-conjugated
Alternate Names	NEDD8; Ubiquitin-like protein Nedd8; Neddylin; NEDD-8; Neural precursor cell expressed developmentally down-regulated protein 8

### Application Instructions

Application table	Application	Dilution
	FACS	1:150 - 1:500
	ICC/IF	1:200 - 1:1000
	IHC-P	0.5 - 1 µg/ml
	WB	0.1 - 0.5 µg/ml
Application Note	IHC-P: Antigen Retrieval: By heat mediation. * The dilutions indicate recommended starting dilutions and the optimal dilutions or concentrations should be determined by the scientist.	

### Properties

Form	Liquid
Purification	Affinity purification with immunogen.
Buffer	0.2% Na <sub>2</sub> HPO <sub>4</sub> , 0.9% NaCl, 0.05% Sodium azide and 5% BSA.
Preservative	0.05% Sodium azide
Stabilizer	5% BSA
Concentration	0.5 mg/ml
Storage instruction	For continuous use, store undiluted antibody at 2-8°C for up to a week. For long-term storage, aliquot and store at -20°C or below. Storage in frost free freezers is not recommended. Avoid repeated

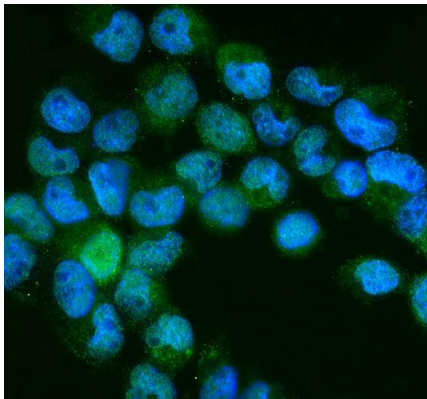
freeze/thaw cycles. Suggest spin the vial prior to opening. The antibody solution should be gently mixed before use.

**Note** For laboratory research only, not for drug, diagnostic or other use.

## Bioinformation

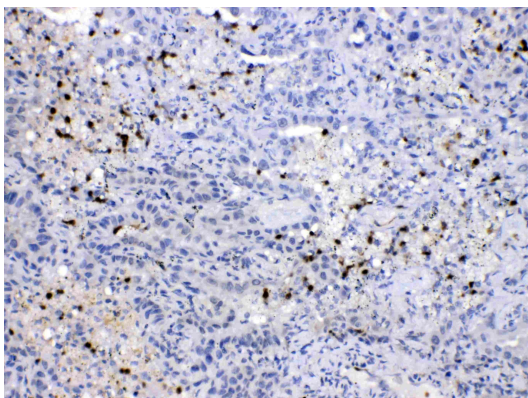
Gene Symbol	NEDD8
Gene Full Name	neural precursor cell expressed, developmentally down-regulated 8
Function	Ubiquitin-like protein which plays an important role in cell cycle control and embryogenesis. Covalent attachment to its substrates requires prior activation by the E1 complex UBE1C-APPBP1 and linkage to the E2 enzyme UBE2M. Attachment of NEDD8 to cullins activates their associated E3 ubiquitin ligase activity, and thus promotes polyubiquitination and proteasomal degradation of cyclins and other regulatory proteins. [UniProt]
Calculated Mw	9 kDa
PTM	Cleavage of precursor form by UCHL3 or SENP8 is necessary for function. [UniProt]
Cellular Localization	Nucleus. Mainly nuclear. [UniProt]

## Images



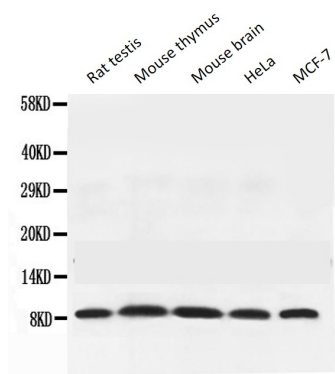
ARG59010 anti-NEDD8 antibody ICC/IF image

Immunofluorescence: A431 cells were blocked with 10% goat serum and then stained with ARG59010 anti-NEDD8 antibody (green) at 2 µg/ml dilution, overnight at 4°C. DAPI (blue) for nuclear staining.



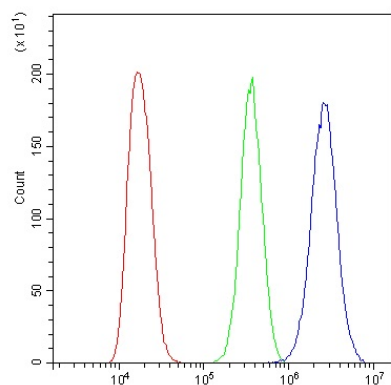
ARG59010 anti-NEDD8 antibody IHC-P image

Immunohistochemistry: Paraffin-embedded Human lung cancer tissue stained with ARG59010 anti-NEDD8 antibody at 1 µg/ml dilution.



#### ARG59010 anti-NEDD8 antibody WB image

Western blot: Rat testis, Mouse thymus, Mouse brain, HeLa and MCF-7 lysates stained with ARG59010 anti-NEDD8 antibody at 0.5  $\mu\text{g/ml}$  dilution.



#### ARG59010 anti-NEDD8 antibody FACS image

Flow Cytometry: A431 cells were blocked with 10% normal goat serum and then stained with ARG59010 anti-NEDD8 antibody (blue) at 1  $\mu\text{g}/10^6$  cells for 30 min at 20°C, followed by incubation with DyLight<sup>®</sup>488 labelled secondary antibody. Isotype control antibody (green) was rabbit IgG (1  $\mu\text{g}/10^6$  cells) used under the same conditions. Unlabelled sample (red) was also used as a control.