

ARG59020 anti-RAB6A antibody

Package: 50 µg
Store at: -20°C

Summary

Product Description	Rabbit Polyclonal antibody recognizes RAB6A
Tested Reactivity	Hu, Ms, Rat
Tested Application	IHC-P, WB
Host	Rabbit
Clonality	Polyclonal
Isotype	IgG
Target Name	RAB6A
Species	Human
Immunogen	Synthetic peptide corresponding to a sequence of Human RAB6A (RRVAAALPGMESTQDRSREDMIDIKLEKPQEQPVSE).
Conjugation	Un-conjugated
Alternate Names	Ras-related protein Rab-6A; Rab-6; RAB6

Application Instructions

Application table	Application	Dilution
	IHC-P	1:200 - 1:1000
	WB	0.1 - 0.5 µg/ml

Application Note
IHC-P: Antigen Retrieval: Heat mediation was performed in Citrate buffer (pH 6.0) for 20 min.
* The dilutions indicate recommended starting dilutions and the optimal dilutions or concentrations should be determined by the scientist.

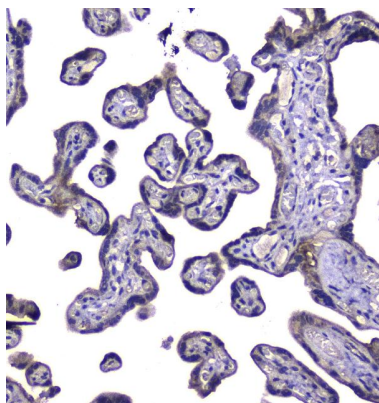
Properties

Form	Liquid
Purification	Affinity purification with immunogen.
Buffer	0.2% Na ₂ HPO ₄ , 0.9% NaCl, 0.05% Sodium azide and 4% Trehalose.
Preservative	0.05% Sodium azide
Stabilizer	4% Trehalose
Concentration	0.5 mg/ml
Storage instruction	For continuous use, store undiluted antibody at 2-8°C for up to a week. For long-term storage, aliquot and store at -20°C or below. Storage in frost free freezers is not recommended. Avoid repeated freeze/thaw cycles. Suggest spin the vial prior to opening. The antibody solution should be gently mixed before use.
Note	For laboratory research only, not for drug, diagnostic or other use.

Bioinformation

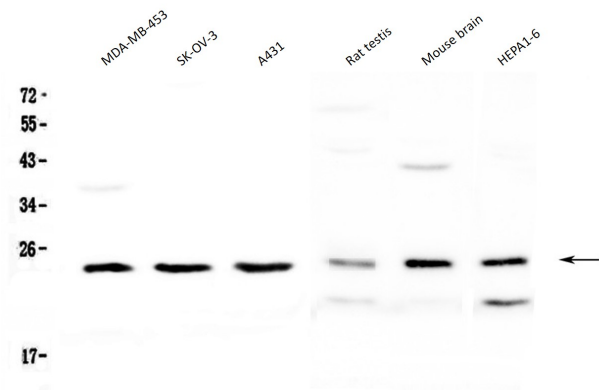
Gene Symbol	RAB6A
Gene Full Name	RAB6A, member RAS oncogene family
Background	This gene encodes a member of the RAB family, which belongs to the small GTPase superfamily. GTPases of the RAB family bind to various effectors to regulate the targeting and fusion of transport carriers to acceptor compartments. This protein is located at the Golgi apparatus, which regulates trafficking in both a retrograde (from early endosomes and Golgi to the endoplasmic reticulum) and an anterograde (from the Golgi to the plasma membrane) directions. Myosin II is an effector of this protein in these processes. This protein is also involved in assembly of human cytomegalovirus (HCMV) by interacting with the cellular protein Bicaudal D1, which interacts with the HCMV virion tegument protein, pp150. Multiple alternatively spliced transcript variants encoding different isoforms have been identified. [provided by RefSeq, Aug 2011]
Function	Protein transport. Regulator of membrane traffic from the Golgi apparatus towards the endoplasmic reticulum (ER). Has a low GTPase activity. [UniProt]
Calculated Mw	24 kDa
PTM	Prenylated. [UniProt]
Cellular Localization	Golgi apparatus membrane. [UniProt]

Images



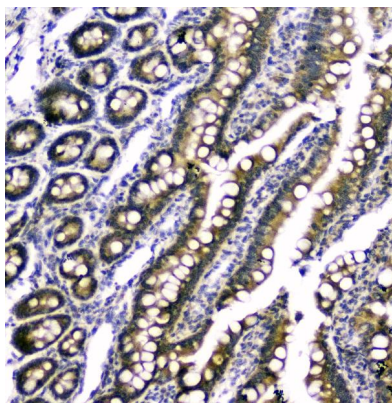
ARG59020 anti-RAB6A antibody IHC-P image

Immunohistochemistry: Paraffin-embedded Human placenta tissue. Antigen Retrieval: Heat mediation was performed in Citrate buffer (pH 6.0) for 20 min. The tissue section was blocked with 10% goat serum. The tissue section was then stained with ARG59020 anti-RAB6A antibody at 2 µg/ml dilution, overnight at 4°C.



ARG59020 anti-RAB6A antibody WB image

Western blot: 50 µg of samples under reducing conditions. MDA-MB-453, SK-OV-3, A431, Rat testis, Mouse brain and HEPA1-6 lysates stained with ARG59020 anti-RAB6A antibody at 0.5 µg/ml, overnight at 4°C.



ARG59020 anti-RAB6A antibody IHC-P image

Immunohistochemistry: Paraffin-embedded Rat small intestine tissue. Antigen Retrieval: Heat mediation was performed in Citrate buffer (pH 6.0) for 20 min. The tissue section was blocked with 10% goat serum. The tissue section was then stained with ARG59020 anti-RAB6A antibody at 1 µg/ml dilution, overnight at 4°C.