

ARG59029 anti-ARHGEF1 antibody

Package: 50 µg
Store at: -20°C

Summary

Product Description	Rabbit Polyclonal antibody recognizes ARHGEF1
Tested Reactivity	Hu, Ms, Rat
Predict Reactivity	Hm
Tested Application	FACS, ICC/IF, IHC-P, WB
Host	Rabbit
Clonality	Polyclonal
Isotype	IgG
Target Name	ARHGEF1
Species	Human
Immunogen	Synthetic peptide corresponding to aa. 41-71 of Human ARHGEF1 (EQNSQFQSLEQVKRRPAHLMALLQHVALQFE).
Conjugation	Un-conjugated
Alternate Names	p115RhoGEF; LSC; SUB1.5; Sub1.5; LBCL2; Rho guanine nucleotide exchange factor 1; P115-RHOGEF; 115 kDa guanine nucleotide exchange factor; p115-RhoGEF; GEF1

Application Instructions

Application table	Application	Dilution
	FACS	1:150 - 1:500
	ICC/IF	1:200 - 1:1000
	IHC-P	0.5 - 1 µg/ml
	WB	0.1 - 0.5 µg/ml
Application Note	IHC-P: Antigen Retrieval: By heat mediation. * The dilutions indicate recommended starting dilutions and the optimal dilutions or concentrations should be determined by the scientist.	

Properties

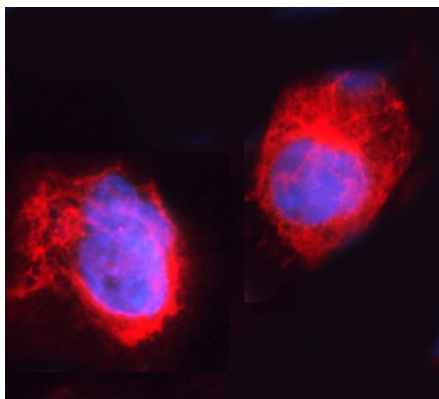
Form	Liquid
Purification	Affinity purification with immunogen.
Buffer	0.2% Na ₂ HPO ₄ , 0.9% NaCl, 0.05% Sodium azide and 5% BSA.
Preservative	0.05% Sodium azide
Stabilizer	5% BSA
Concentration	0.5 mg/ml

Storage instruction	For continuous use, store undiluted antibody at 2-8°C for up to a week. For long-term storage, aliquot and store at -20°C or below. Storage in frost free freezers is not recommended. Avoid repeated freeze/thaw cycles. Suggest spin the vial prior to opening. The antibody solution should be gently mixed before use.
Note	For laboratory research only, not for drug, diagnostic or other use.

Bioinformation

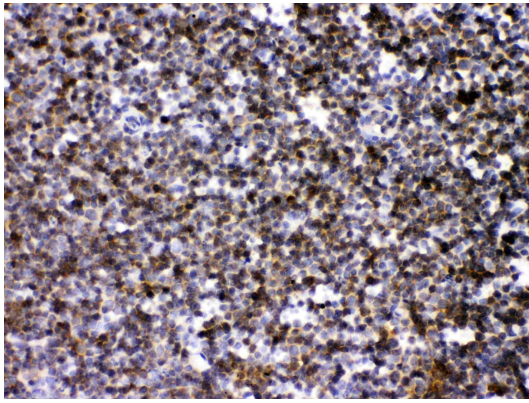
Gene Symbol	ARHGEF1
Gene Full Name	Rho guanine nucleotide exchange factor (GEF) 1
Background	Rho GTPases play a fundamental role in numerous cellular processes that are initiated by extracellular stimuli that work through G protein coupled receptors. The encoded protein may form complex with G proteins and stimulate Rho-dependent signals. Multiple alternatively spliced transcript variants have been found for this gene, but the full-length nature of some variants has not been defined. [provided by RefSeq, Jul 2008]
Function	Seems to play a role in the regulation of RhoA GTPase by guanine nucleotide-binding alpha-12 (GNA12) and alpha-13 (GNA13) subunits. Acts as GTPase-activating protein (GAP) for GNA12 and GNA13, and as guanine nucleotide exchange factor (GEF) for RhoA GTPase. Activated G alpha 13/GNA13 stimulates the RhoGEF activity through interaction with the RGS-like domain. This GEF activity is inhibited by binding to activated GNA12. Mediates angiotensin-2-induced RhoA activation. [UniProt]
Calculated Mw	102 kDa
PTM	Phosphorylated by PKCA. Angiotensin-2 induced Tyr-738 phosphorylation is mediated by JAK2. [UniProt]
Cellular Localization	Cytoplasm. Membrane. Translocated to the membrane by activated GNA13 or LPA stimulation. [UniProt]

Images



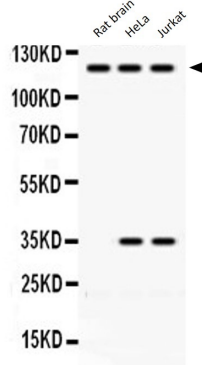
ARG59029 anti-ARHGEF1 antibody ICC/IF image

Immunofluorescence: A431 cells were blocked with 10% goat serum and then stained with ARG59029 anti-ARHGEF1 antibody (red) at 2 µg/ml dilution, overnight at 4°C. DAPI (blue) for nuclear staining.



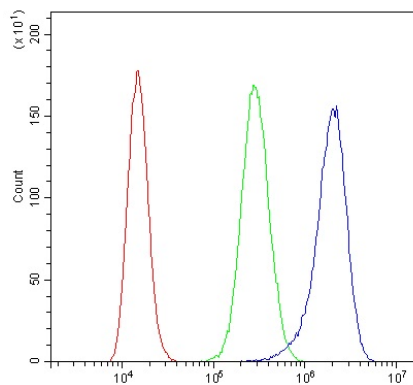
ARG59029 anti-ARHGEF1 antibody IHC-P image

Immunohistochemistry: Paraffin-embedded Mouse lymphaden tissue stained with ARG59029 anti-ARHGEF1 antibody at 1 µg/ml dilution.



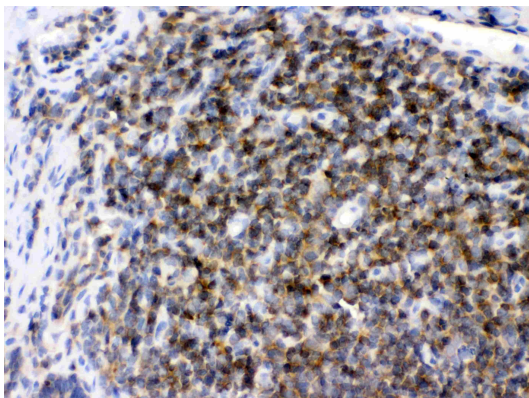
ARG59029 anti-ARHGEF1 antibody WB image

Western blot: Rat brain, HeLa and Jurkat lysates stained with ARG59029 anti-ARHGEF1 antibody at 0.5 µg/ml dilution.



ARG59029 anti-ARHGEF1 antibody FACS image

Flow Cytometry: A431 cells were blocked with 10% normal goat serum and then stained with ARG59029 anti-ARHGEF1 antibody (blue) at 1 µg/10⁶ cells for 30 min at 20°C, followed by incubation with DyLight[®]488 labelled secondary antibody. Isotype control antibody (green) was rabbit IgG (1 µg/10⁶ cells) used under the same conditions. Unlabelled sample (red) was also used as a control.



ARG59029 anti-ARHGEF1 antibody IHC-P image

Immunohistochemistry: Paraffin-embedded Rat lymphaden tissue stained with ARG59029 anti-ARHGEF1 antibody at 1 µg/ml dilution.