

ARG59056 anti-SETD7 antibody

Package: 100 µl
Store at: -20°C

Summary

Product Description	Rabbit Polyclonal antibody recognizes SETD7
Tested Reactivity	Hu
Predict Reactivity	Ms, Rat
Tested Application	WB
Host	Rabbit
Clonality	Polyclonal
Isotype	IgG
Target Name	SETD7
Species	Human
Immunogen	Synthetic peptide derived from Human SETD7.
Conjugation	Un-conjugated
Alternate Names	SET7/9; KMT7; Lysine N-methyltransferase 7; SET domain-containing protein 7; SET7; EC 2.1.1.43; Histone-lysine N-methyltransferase SETD7; Histone H3-K4 methyltransferase SETD7; H3-K4-HMTase SETD7; SET9

Application Instructions

Application table	Application	Dilution
	WB	1:500 - 1:2000
Application Note	* The dilutions indicate recommended starting dilutions and the optimal dilutions or concentrations should be determined by the scientist.	
Observed Size	40kDa	

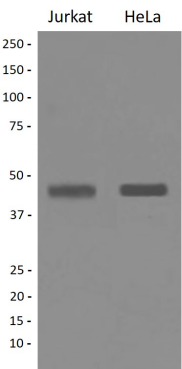
Properties

Form	Liquid
Purification	Affinity purified.
Buffer	PBS (pH 7.4), 0.02% Sodium azide and 50% Glycerol.
Preservative	0.02% Sodium azide
Stabilizer	50% Glycerol
Storage instruction	For continuous use, store undiluted antibody at 2-8°C for up to a week. For long-term storage, aliquot and store at -20°C. Storage in frost free freezers is not recommended. Avoid repeated freeze/thaw cycles. Suggest spin the vial prior to opening. The antibody solution should be gently mixed before use.
Note	For laboratory research only, not for drug, diagnostic or other use.

Bioinformation

Gene Symbol	SETD7
Gene Full Name	SET domain containing (lysine methyltransferase) 7
Function	Histone methyltransferase that specifically monomethylates 'Lys-4' of histone H3. H3 'Lys-4' methylation represents a specific tag for epigenetic transcriptional activation. Plays a central role in the transcriptional activation of genes such as collagenase or insulin. Recruited by IPF1/PDX-1 to the insulin promoter, leading to activate transcription. Has also methyltransferase activity toward non-histone proteins such as p53/TP53, TAF10, and possibly TAF7 by recognizing and binding the [KR]-[STA]-K in substrate proteins. Monomethylates 'Lys-189' of TAF10, leading to increase the affinity of TAF10 for RNA polymerase II. Monomethylates 'Lys-372' of p53/TP53, stabilizing p53/TP53 and increasing p53/TP53-mediated transcriptional activation. [UniProt]
Calculated Mw	41 kDa
Cellular Localization	Nucleus. Chromosome. [UniProt]

Images



ARG59056 anti-SETD7 antibody WB image

Western blot: Jurkat and HeLa cell lysates stained with ARG59056 anti-SETD7 antibody.