

ARG59063 anti-MST1 / MSP antibody

Package: 100 µl
Store at: -20°C

Summary

Product Description	Rabbit Polyclonal antibody recognizes MST1 / MSP
Tested Reactivity	Hu
Tested Application	WB
Specificity	This antibody might also reacts to MST1L based on sequence analysis.
Host	Rabbit
Clonality	Polyclonal
Isotype	IgG
Target Name	MST1 / MSP
Species	Human
Immunogen	Synthetic peptide derived from Human MST1 / MSP.
Conjugation	Un-conjugated
Alternate Names	Macrophage-stimulating protein; MSP; D3F15S2; NF15S2; DNF15S2; Macrophage stimulatory protein; Hepatocyte growth factor-like protein; HGFL

Application Instructions

Application table	Application	Dilution
	WB	1:500 - 1:2000
Application Note	* The dilutions indicate recommended starting dilutions and the optimal dilutions or concentrations should be determined by the scientist.	
Observed Size	80kDa	

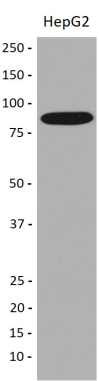
Properties

Form	Liquid
Purification	Affinity purified.
Buffer	PBS (pH 7.4), 150mM NaCl, 0.02% Sodium azide and 50% Glycerol.
Preservative	0.02% Sodium azide
Stabilizer	50% Glycerol
Storage instruction	For continuous use, store undiluted antibody at 2-8°C for up to a week. For long-term storage, aliquot and store at -20°C. Storage in frost free freezers is not recommended. Avoid repeated freeze/thaw cycles. Suggest spin the vial prior to opening. The antibody solution should be gently mixed before use.
Note	For laboratory research only, not for drug, diagnostic or other use.

Bioinformation

Gene Symbol	MST1
Gene Full Name	macrophage stimulating 1
Background	The protein encoded by this gene contains four kringle domains and a serine protease domain, similar to that found in hepatic growth factor. Despite the presence of the serine protease domain, the encoded protein may not have any proteolytic activity. The receptor for this protein is RON tyrosine kinase, which upon activation stimulates ciliary motility of ciliated epithelial lung cells. This protein is secreted and cleaved to form an alpha chain and a beta chain bridged by disulfide bonds. [provided by RefSeq, Jan 2010]
Calculated Mw	80 kDa
PTM	Cleaved after Arg-483, probably by HPN/Hepsin, to yield the active form consisting of two disulfide-linked chains. [UniProt]
Cellular Localization	Secreted. [UniProt]

Images



ARG59063 anti-MST1 / MSP antibody WB image

Western blot: HepG2 cell lysate stained with ARG59063 anti-MST1 / MSP antibody.