

ARG59081 anti-SDHA antibody

Package: 100 µl
Store at: -20°C

Summary

Product Description	Rabbit Polyclonal antibody recognizes SDHA
Tested Reactivity	Hu, Ms, Rat
Tested Application	ICC/IF, IHC-P, WB
Host	Rabbit
Clonality	Polyclonal
Isotype	IgG
Target Name	SDHA
Species	Human
Immunogen	Recombinant fusion protein corresponding to aa. 385-664 of Human SDHA (NP_004159.2).
Conjugation	Un-conjugated
Alternate Names	FP; Fp; SDH1; PGL5; SDH2; Flavoprotein subunit of complex II; Succinate dehydrogenase [ubiquinone] flavoprotein subunit, mitochondrial; CMD1GG; EC 1.3.5.1; SDHF

Application Instructions

Application table	Application	Dilution
	ICC/IF	1:50 - 1:200
	IHC-P	1:50 - 1:200
	WB	1:500 - 1:2000
Application Note	* The dilutions indicate recommended starting dilutions and the optimal dilutions or concentrations should be determined by the scientist.	
Positive Control	U-251MG	
Observed Size	70kDa	

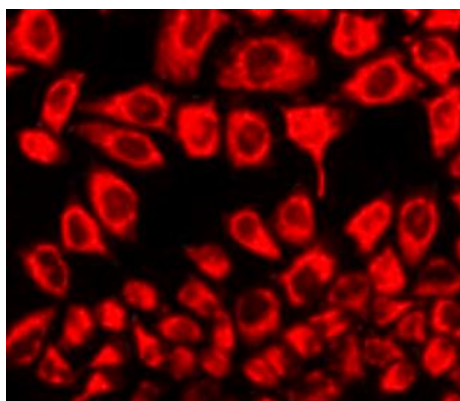
Properties

Form	Liquid
Purification	Affinity purified.
Buffer	PBS (pH 7.3), 0.02% Sodium azide and 50% Glycerol.
Preservative	0.02% Sodium azide
Stabilizer	50% Glycerol
Storage instruction	For continuous use, store undiluted antibody at 2-8°C for up to a week. For long-term storage, aliquot and store at -20°C. Storage in frost free freezers is not recommended. Avoid repeated freeze/thaw cycles. Suggest spin the vial prior to opening. The antibody solution should be gently mixed before use.

Bioinformation

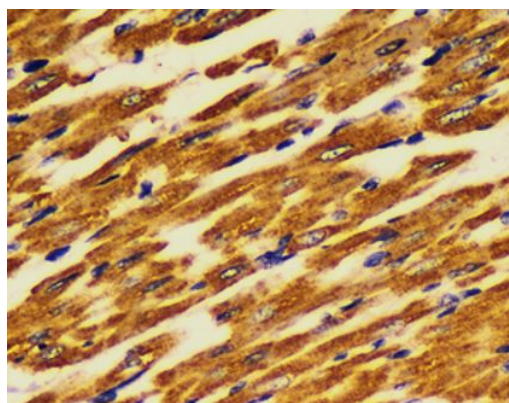
Gene Symbol	SDHA
Gene Full Name	succinate dehydrogenase complex, subunit A, flavoprotein (Fp)
Background	This gene encodes a major catalytic subunit of succinate-ubiquinone oxidoreductase, a complex of the mitochondrial respiratory chain. The complex is composed of four nuclear-encoded subunits and is localized in the mitochondrial inner membrane. Mutations in this gene have been associated with a form of mitochondrial respiratory chain deficiency known as Leigh Syndrome. A pseudogene has been identified on chromosome 3q29. Alternatively spliced transcript variants encoding different isoforms have been found for this gene. [provided by RefSeq, Jun 2014]
Function	Flavoprotein (FP) subunit of succinate dehydrogenase (SDH) that is involved in complex II of the mitochondrial electron transport chain and is responsible for transferring electrons from succinate to ubiquinone (coenzyme Q). Can act as a tumor suppressor. [UniProt]
Calculated Mw	73 kDa
PTM	Phosphorylation at Tyr-215 is important for efficient electron transfer in complex II and the prevention of ROS generation. Acetylated. Deacetylated by SIRT3. [UniProt]
Cellular Localization	Mitochondrion inner membrane; Peripheral membrane protein; Matrix side. [UniProt]

Images



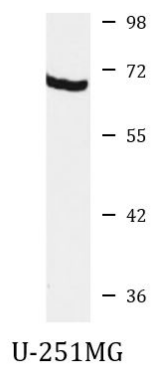
ARG59081 anti-SDHA antibody ICC/IF image

Immunofluorescence: HeLa cells stained with ARG59081 anti-SDHA antibody.



ARG59081 anti-SDHA antibody IHC-P image

Immunohistochemistry: Paraffin-embedded Rat heart stained with ARG59081 anti-SDHA antibody at 1:100 dilution.



ARG59081 anti-SDHA antibody WB image

Western blot: 25 µg of U-251MG cell lysate stained with ARG59081 anti-SDHA antibody at 1:1000 dilution.