

## ARG59122 anti-GLUT2 antibody

Package: 50 µg  
Store at: -20°C

### Summary

Product Description	Rabbit Polyclonal antibody recognizes GLUT2
Tested Reactivity	Hu
Tested Application	IHC-P
Host	Rabbit
Clonality	Polyclonal
Isotype	IgG
Target Name	GLUT2
Species	Human
Immunogen	Synthetic peptide corresponding to aa. 486-514 of Human GLUT2. (ETKGKSFEIAAEFQKKSGSAHRPKAAVE).
Conjugation	Un-conjugated
Alternate Names	Solute carrier family 2, facilitated glucose transporter member 2; GLUT-2; GLUT2; Glucose transporter type 2, liver

### Application Instructions

Application table	Application	Dilution
	IHC-P	0.5 - 1 µg/ml
Application Note	IHC-P: Antigen Retrieval: By heat mediation. * The dilutions indicate recommended starting dilutions and the optimal dilutions or concentrations should be determined by the scientist.	

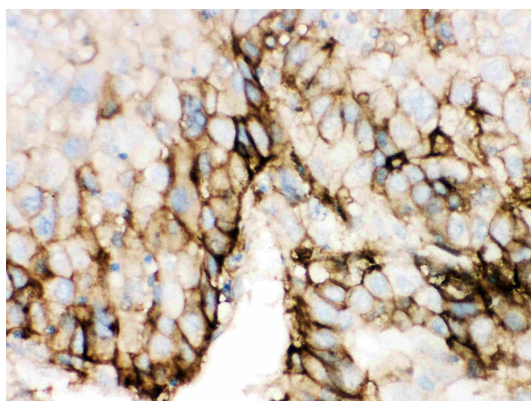
### Properties

Form	Liquid
Purification	Affinity purification with immunogen.
Buffer	0.9% NaCl, 0.2% Na <sub>2</sub> HPO <sub>4</sub> , 0.05% Sodium azide and 5% BSA.
Preservative	0.05% Sodium azide
Stabilizer	5% BSA
Concentration	0.5 mg/ml
Storage instruction	For continuous use, store undiluted antibody at 2-8°C for up to a week. For long-term storage, aliquot and store at -20°C or below. Storage in frost free freezers is not recommended. Avoid repeated freeze/thaw cycles. Suggest spin the vial prior to opening. The antibody solution should be gently mixed before use.
Note	For laboratory research only, not for drug, diagnostic or other use.

## Bioinformation

Gene Symbol	SLC2A2
Gene Full Name	solute carrier family 2 (facilitated glucose transporter), member 2
Background	This gene encodes an integral plasma membrane glycoprotein of the liver, islet beta cells, intestine, and kidney epithelium. The encoded protein mediates facilitated bidirectional glucose transport. Because of its low affinity for glucose, it has been suggested as a glucose sensor. Mutations in this gene are associated with susceptibility to diseases, including Fanconi-Bickel syndrome and noninsulin-dependent diabetes mellitus (NIDDM). Alternative splicing results in multiple transcript variants of this gene. [provided by RefSeq, Jul 2013]
Function	Facilitative glucose transporter. This isoform likely mediates the bidirectional transfer of glucose across the plasma membrane of hepatocytes and is responsible for uptake of glucose by the beta cells; may comprise part of the glucose-sensing mechanism of the beta cell. May also participate with the Na(+)/glucose cotransporter in the transcellular transport of glucose in the small intestine and kidney. [UniProt]
Calculated Mw	57 kDa
PTM	N-glycosylated; required for stability and retention at the cell surface of pancreatic beta cells. [UniProt]
Cellular Localization	Membrane; Multi-pass membrane protein. [UniProt]

## Images



ARG59122 anti-GLUT2 antibody IHC-P image

Immunohistochemistry: Paraffin-embedded Human liver cancer stained with ARG59122 anti-GLUT2 antibody.