

ARG59126 anti-SLC19A1 antibody

Package: 50 µg
Store at: -20°C

Summary

Product Description	Rabbit Polyclonal antibody recognizes SLC19A1
Tested Reactivity	Hu, Ms, Rat, Mk
Tested Application	WB
Host	Rabbit
Clonality	Polyclonal
Isotype	IgG
Target Name	SLC19A1
Species	Human
Immunogen	Synthetic peptide corresponding to aa. 202-231 of Human SLC19A1. (FLKRPKRSLFFNRDDRGRCETSASELERMN)
Conjugation	Un-conjugated
Alternate Names	Reduced folate carrier protein; FOLT; Folate transporter 1; IFC-1; IFC1; CHMD; Placental folate transporter; RFC1; Intestinal folate carrier 1; RFC; Solute carrier family 19 member 1; REFC

Application Instructions

Application table	Application	Dilution
	WB	0.1 - 0.5 µg/ml
Application Note	* The dilutions indicate recommended starting dilutions and the optimal dilutions or concentrations should be determined by the scientist.	

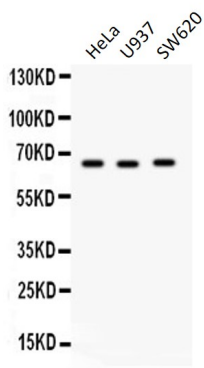
Properties

Form	Liquid
Purification	Affinity purification with immunogen.
Buffer	0.9% NaCl, 0.2% Na ₂ HPO ₄ , 0.05% Sodium azide and 5% BSA.
Preservative	0.05% Sodium azide
Stabilizer	5% BSA
Concentration	0.5 mg/ml
Storage instruction	For continuous use, store undiluted antibody at 2-8°C for up to a week. For long-term storage, aliquot and store at -20°C or below. Storage in frost free freezers is not recommended. Avoid repeated freeze/thaw cycles. Suggest spin the vial prior to opening. The antibody solution should be gently mixed before use.
Note	For laboratory research only, not for drug, diagnostic or other use.

Bioinformation

Gene Symbol	SLC19A1
Gene Full Name	solute carrier family 19 (folate transporter), member 1
Background	The membrane protein encoded by this gene is a transporter of folate and is involved in the regulation of intracellular concentrations of folate. Three transcript variants encoding different isoforms have been found for this gene.[provided by RefSeq, Mar 2011]
Function	Transporter for the intake of folate. Uptake of folate in human placental choriocarcinoma cells occurs by a novel mechanism called potocytosis which functionally couples three components, namely the folate receptor, the folate transporter, and a V-type H(+)-pump. [UniProt]
Calculated Mw	65 kDa
PTM	Heavily glycosylated. [UniProt]
Cellular Localization	Membrane; Multi-pass membrane protein. [UniProt]

Images



ARG59126 anti-SLC19A1 antibody WB image

Western blot: 40 µg of HeLa, U937 and SW620 cell lysates stained with ARG59126 anti-SLC19A1 antibody at 0.5 µg/ml dilution.