

ARG59212 anti-CCDC6 antibody

Package: 50 µg
Store at: -20°C

Summary

Product Description	Rabbit Polyclonal antibody recognizes CCDC6
Tested Reactivity	Hu, Rat
Predict Reactivity	Bov, Chk, Dog, Hm, Hrs, Mk, Rb, Zfsh
Tested Application	FACS, ICC/IF, WB
Host	Rabbit
Clonality	Polyclonal
Isotype	IgG
Target Name	CCDC6
Species	Human
Immunogen	Synthetic peptide corresponding to aa. 156-198 of Human CCDC6. (KAELEQHLEQEQEFQVNKLMKKIKKLENDTISKQLTLEQLRRE)
Conjugation	Un-conjugated
Alternate Names	TPC; PTC; D10S170; H4; Papillary thyroid carcinoma-encoded protein; Coiled-coil domain-containing protein 6; Protein H4; TST1

Application Instructions

Application table	Application	Dilution
	FACS	1:150 - 1:500
	ICC/IF	1:200 - 1:1000
	WB	0.1 - 0.5 µg/ml
Application Note	* The dilutions indicate recommended starting dilutions and the optimal dilutions or concentrations should be determined by the scientist.	

Properties

Form	Liquid
Purification	Affinity purification with immunogen.
Buffer	0.9% NaCl, 0.2% Na2HPO4, 0.05% Sodium azide and 5% BSA.
Preservative	0.05% Sodium azide
Stabilizer	5% BSA
Concentration	0.5 mg/ml
Storage instruction	For continuous use, store undiluted antibody at 2-8°C for up to a week. For long-term storage, aliquot and store at -20°C or below. Storage in frost free freezers is not recommended. Avoid repeated freeze/thaw cycles. Suggest spin the vial prior to opening. The antibody solution should be gently mixed

before use.

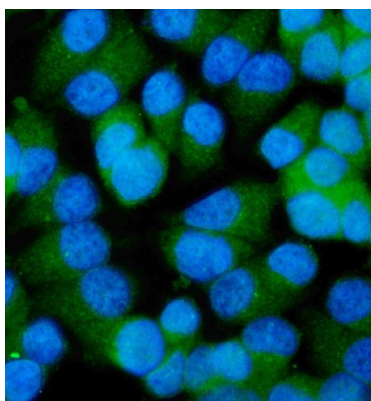
Note

For laboratory research only, not for drug, diagnostic or other use.

Bioinformation

Gene Symbol	CCDC6
Gene Full Name	coiled-coil domain containing 6
Background	This gene encodes a coiled-coil domain-containing protein. The encoded protein is ubiquitously expressed and may function as a tumor suppressor. A chromosomal rearrangement resulting in the expression of a fusion gene containing a portion of this gene and the intracellular kinase-encoding domain of the ret proto-oncogene is the cause of thyroid papillary carcinoma.[provided by RefSeq, Sep 2010]
Calculated Mw	53 kDa
Cellular Localization	Cytoplasm. Cytoplasm, cytoskeleton. Note=May be a cytoskeletal protein. [UniProt]

Images



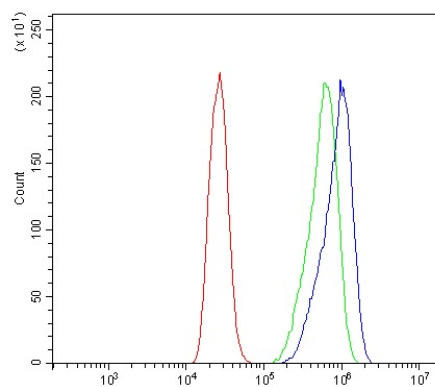
ARG59212 anti-CCDC6 antibody ICC/IF image

Immunofluorescence: T-47D cells were blocked with 10% goat serum and then stained with ARG59212 anti-CCDC6 antibody (green) at 5 µg/ml dilution, overnight at 4°C. DAPI (blue) for nuclear staining.



ARG59212 anti-CCDC6 antibody WB image

Western blot: Rat testis and MCF-7 whole cell lysate stained with ARG59212 anti-CCDC6 antibody at 0.5 µg/ml dilution.



ARG59212 anti-CCDC6 antibody FACS image

Flow Cytometry: Caco-2 cells were blocked with 10% normal goat serum and then stained with ARG59212 anti-CCDC6 antibody (blue) at 1 µg/10⁶ cells for 30 min at 20°C, followed by incubation with DyLight®488 labelled secondary antibody. Isotype control antibody (green) was rabbit IgG (1 µg/10⁶ cells) used under the same conditions. Unlabelled sample (red) was also used as a control.