

## ARG59219 anti-Wnt2b antibody

Package: 50 µg  
Store at: -20°C

### Summary

Product Description	Rabbit Polyclonal antibody recognizes Wnt2b
Tested Reactivity	Hu, Ms, Rat
Predict Reactivity	Hm
Tested Application	IHC-P, WB
Host	Rabbit
Clonality	Polyclonal
Isotype	IgG
Target Name	Wnt2b
Species	Human
Immunogen	Synthetic peptide corresponding to aa. 87-112 of Human Wnt2b. (QRYPDIMRSVGEGAREWIRECQHQR)
Conjugation	Un-conjugated
Alternate Names	Protein Wnt-13; WNT13; Protein Wnt-2b

### Application Instructions

Application table	Application	Dilution
	IHC-P	0.5 - 1 µg/ml
	WB	0.1 - 0.5 µg/ml
Application Note	IHC-P: Antigen Retrieval: By heat mediation. * The dilutions indicate recommended starting dilutions and the optimal dilutions or concentrations should be determined by the scientist.	

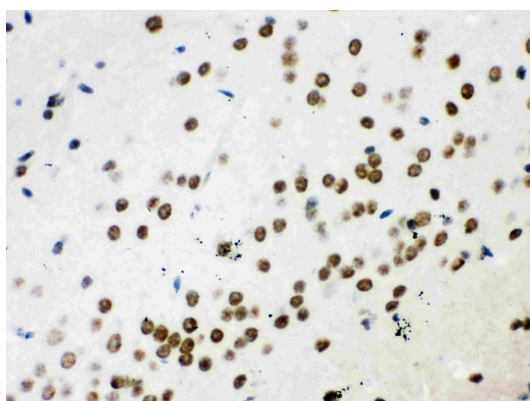
### Properties

Form	Liquid
Purification	Affinity purification with immunogen.
Buffer	0.9% NaCl, 0.2% Na <sub>2</sub> HPO <sub>4</sub> , 0.05% Sodium azide and 5% BSA.
Preservative	0.05% Sodium azide
Stabilizer	5% BSA
Concentration	0.5 mg/ml
Storage instruction	For continuous use, store undiluted antibody at 2-8°C for up to a week. For long-term storage, aliquot and store at -20°C or below. Storage in frost free freezers is not recommended. Avoid repeated freeze/thaw cycles. Suggest spin the vial prior to opening. The antibody solution should be gently mixed before use.

## Bioinformation

Gene Symbol	WNT2B
Gene Full Name	wingless-type MMTV integration site family, member 2B
Background	This gene encodes a member of the wingless-type MMTV integration site (WNT) family of highly conserved, secreted signaling factors. WNT family members function in a variety of developmental processes including regulation of cell growth and differentiation and are characterized by a WNT-core domain. This gene may play a role in human development as well as carcinogenesis. Alternative splicing results in multiple transcript variants. [provided by RefSeq, May 2014]
Function	Ligand for members of the frizzled family of seven transmembrane receptors. Probable developmental protein. May be a signaling molecule which affects the development of discrete regions of tissues. Is likely to signal over only few cell diameters. May be involved in normal development or differentiation as well as in carcinogenesis. [UniProt]
Calculated Mw	44 kDa
PTM	Palmitoleylation is required for efficient binding to frizzled receptors. Depalmitoleylation leads to Wnt signaling pathway inhibition. [UniProt]
Cellular Localization	Secreted, extracellular space, extracellular matrix. Secreted. [UniProt]

## Images



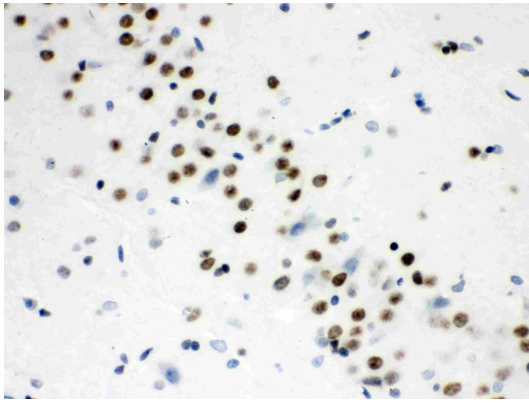
ARG59219 anti-Wnt2b antibody IHC-P image

Immunohistochemistry: Paraffin-embedded Mouse brain stained with ARG59219 anti-Wnt2b antibody.



ARG59219 anti-Wnt2b antibody WB image

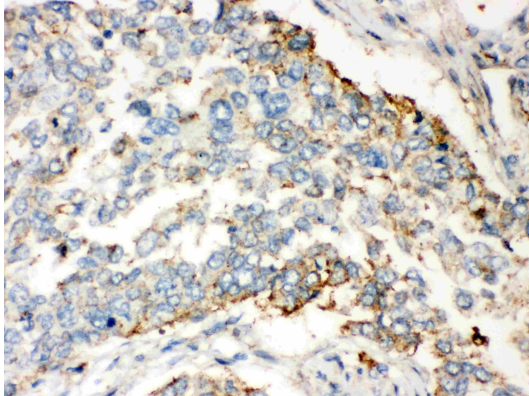
Western blot: 40 µg of 22RV1 whole cell lysate stained with ARG59219 anti-Wnt2b antibody at 0.5 µg/ml dilution.



ARG59219 anti-Wnt2b antibody IHC-P image

Immunohistochemistry: Paraffin-embedded Rat brain stained with ARG59219 anti-Wnt2b antibody.

---



ARG59219 anti-Wnt2b antibody IHC-P image

Immunohistochemistry: Paraffin-embedded Human lung cancer stained with ARG59219 anti-Wnt2b antibody.

---