

ARG59234 anti-IL32 antibody

Package: 50 µg
Store at: -20°C

Summary

Product Description	Rabbit Polyclonal antibody recognizes IL32
Tested Reactivity	Hu, Ms
Tested Application	ICC/IF, IHC-P, WB
Host	Rabbit
Clonality	Polyclonal
Isotype	IgG
Target Name	IL32
Species	Human
Immunogen	A 15 aa synthetic peptide around the C-terminus of Human IL32. (within the last 50 aa)
Conjugation	Un-conjugated
Alternate Names	IL-32gamma; IL-32beta; IL-32delta; Interleukin-32; TAIa; TAIc; TAIb; NK4; TAI; IL-32; TAI; Natural killer cells protein 4; Tumor necrosis factor alpha-inducing factor; IL-32alpha

Application Instructions

Application table	Application	Dilution
	ICC/IF	20 µg/ml
	IHC-P	5 µg/ml
	WB	5 - 10 µg/ml
Application Note	* The dilutions indicate recommended starting dilutions and the optimal dilutions or concentrations should be determined by the scientist.	

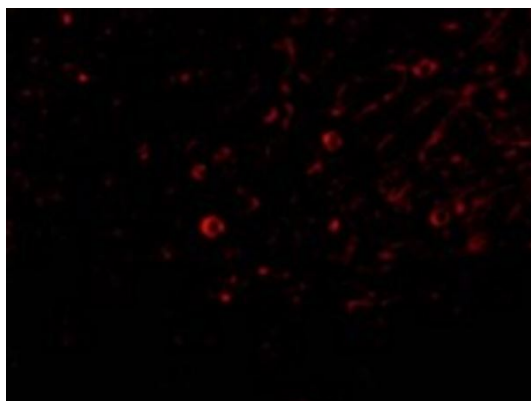
Properties

Form	Liquid
Purification	Affinity purification with immunogen.
Buffer	PBS and 0.02% Sodium azide.
Preservative	0.02% Sodium azide
Concentration	1 mg/ml
Storage instruction	For continuous use, store undiluted antibody at 2-8°C for up to a week. For long-term storage, aliquot and store at -20°C or below. Storage in frost free freezers is not recommended. Avoid repeated freeze/thaw cycles. Suggest spin the vial prior to opening. The antibody solution should be gently mixed before use.
Note	For laboratory research only, not for drug, diagnostic or other use.

Bioinformation

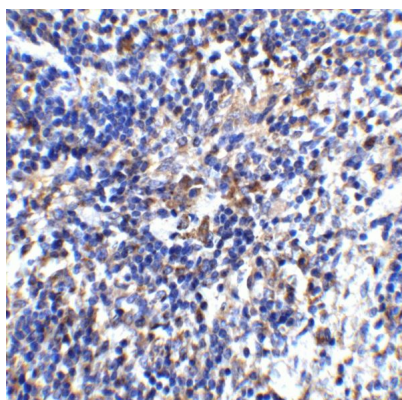
Gene Symbol	IL32
Gene Full Name	interleukin 32
Background	This gene encodes a member of the cytokine family. The protein contains a tyrosine sulfation site, 3 potential N-myristoylation sites, multiple putative phosphorylation sites, and an RGD cell-attachment sequence. Expression of this protein is increased after the activation of T-cells by mitogens or the activation of NK cells by IL-2. This protein induces the production of TNFalpha from macrophage cells. Alternate transcriptional splice variants, encoding different isoforms, have been characterized. [provided by RefSeq, Jul 2008]
Function	Cytokine that may play a role in innate and adaptive immune responses. It induces various cytokines such as TNFA/TNF-alpha and IL8. It activates typical cytokine signal pathways of NF-kappa-B and p38 MAPK. [UniProt]
Calculated Mw	27 kDa
Cellular Localization	Secreted. [UniProt]

Images



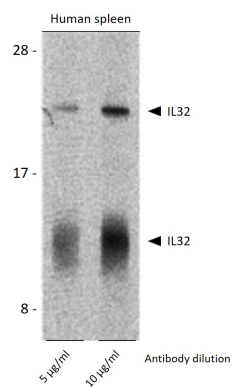
ARG59234 anti-IL32 antibody ICC/IF image

Immunofluorescence: Human spleen cells stained with ARG59234 anti-IL32 antibody (red) at 20 µg/ml dilution.



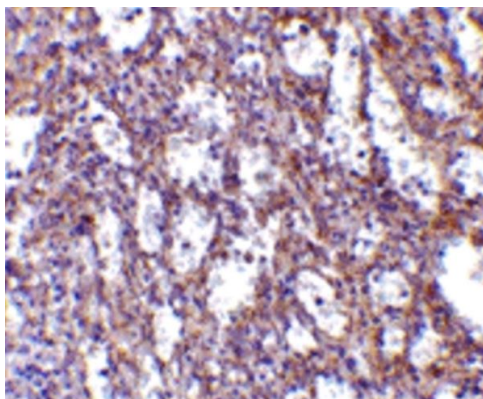
ARG59234 anti-IL32 antibody IHC-P image

Immunohistochemistry: Paraffin-embedded Mouse spleen stained with ARG59234 anti-IL32 antibody at 2 µg/ml dilution.



ARG59234 anti-IL32 antibody WB image

Western blot: Human spleen lysate stained with ARG59234 anti-IL32 antibody at 5 and 10 µg/ml dilution. The blot shows two isoforms of IL32.



ARG59234 anti-IL32 antibody IHC-P image

Immunohistochemistry: Paraffin-embedded Human spleen stained with ARG59234 anti-IL32 antibody at 10 µg/ml dilution.