

## ARG59246 anti-IRF9 antibody

Package: 50 µl  
Store at: -20°C

### Summary

Product Description	Rabbit Polyclonal antibody recognizes IRF9
Tested Reactivity	Hu
Predict Reactivity	Ms, Rat, Cow, Dog, Gpig, Hrs, Rb, Zfsh
Tested Application	IHC-P, WB
Host	Rabbit
Clonality	Polyclonal
Isotype	IgG
Target Name	IRF9
Species	Human
Immunogen	Synthetic peptide around the N-terminal region of Human IRF9. (within the following region: PWKHAGKQDFREDQDAAFFKAWAIFKGYKEGDTGGPAVWVWTRLRALNK)
Conjugation	Un-conjugated
Alternate Names	ISGF-3 gamma; Transcriptional regulator ISGF3 subunit gamma; ISGF3G; ISGF3; Interferon-stimulated gene factor 3 gamma; IRF-9; ISGF3 p48 subunit; p48; IFN-alpha-responsive transcription factor subunit; Interferon regulatory factor 9

### Application Instructions

Predict Reactivity Note	Predicted Homology Based On Immunogen Sequence: Cow: 100%; Dog: 100%; Guinea Pig: 100%; Horse: 100%; Mouse: 100%; Rabbit: 100%; Rat: 100%; Zebrafish: 79%						
Application table	<table border="1"> <thead> <tr> <th>Application</th> <th>Dilution</th> </tr> </thead> <tbody> <tr> <td>IHC-P</td> <td>Assay-dependent</td> </tr> <tr> <td>WB</td> <td>0.2 - 1 µg/ml</td> </tr> </tbody> </table>	Application	Dilution	IHC-P	Assay-dependent	WB	0.2 - 1 µg/ml
Application	Dilution						
IHC-P	Assay-dependent						
WB	0.2 - 1 µg/ml						
Application Note	* The dilutions indicate recommended starting dilutions and the optimal dilutions or concentrations should be determined by the scientist.						
Positive Control	HepG2						
Observed Size	~ 40 kDa						

### Properties

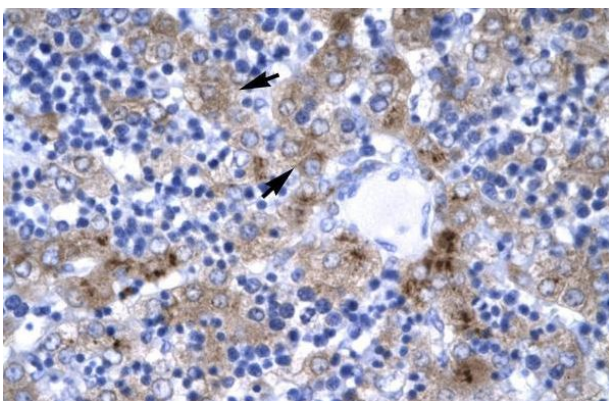
Form	Liquid
Purification	Affinity purified.
Buffer	PBS, 0.09% (w/v) Sodium azide and 2% Sucrose.
Preservative	0.09% (w/v) Sodium azide

Stabilizer	2% Sucrose
Concentration	Batch dependent: 0.5 - 1 mg/ml
Storage instruction	For continuous use, store undiluted antibody at 2-8°C for up to a week. For long-term storage, aliquot and store at -20°C or below. Storage in frost free freezers is not recommended. Avoid repeated freeze/thaw cycles. Suggest spin the vial prior to opening. The antibody solution should be gently mixed before use.
Note	For laboratory research only, not for drug, diagnostic or other use.

## Bioinformation

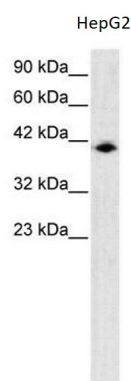
Gene Symbol	IRF9
Gene Full Name	interferon regulatory factor 9
Function	Transcription factor that mediates signaling by type I IFNs (IFN-alpha and IFN-beta). Following type I IFN binding to cell surface receptors, Jak kinases (TYK2 and JAK1) are activated, leading to tyrosine phosphorylation of STAT1 and STAT2. IRF9/ISGF3G associates with the phosphorylated STAT1:STAT2 dimer to form a complex termed ISGF3 transcription factor, that enters the nucleus. ISGF3 binds to the IFN stimulated response element (ISRE) to activate the transcription of interferon stimulated genes, which drive the cell in an antiviral state. [UniProt]
Calculated Mw	44 kDa
Cellular Localization	Cytoplasm. Nucleus. Note=Translocated into the nucleus upon activation by IFN-alpha/beta. [UniProt]

## Images



ARG59246 anti-IRF9 antibody IHC-P image

Immunohistochemistry: Paraffin-embedded Human liver stained with ARG59246 anti-IRF9 antibody.



ARG59246 anti-IRF9 antibody WB image

Western blot: HepG2 cell lysate stained with ARG59246 anti-IRF9 antibody at 0.2 - 1 µg/ml dilution.