

## ARG59262 anti-CLPX antibody

Package: 100 µl  
Store at: -20°C

### Summary

Product Description	Rabbit Polyclonal antibody recognizes CLPX
Tested Reactivity	Hu
Predict Reactivity	Rat
Tested Application	FACS, IHC-P, WB
Host	Rabbit
Clonality	Polyclonal
Isotype	IgG
Target Name	CLPX
Species	Human
Immunogen	KLH-conjugated synthetic peptide corresponding to aa. 449-477 (C-terminus) of Human CLPX.
Conjugation	Un-conjugated
Alternate Names	ATP-dependent Clp protease ATP-binding subunit clpX-like, mitochondrial

### Application Instructions

Application table	Application	Dilution
	FACS	1:10 - 1:50
	IHC-P	1:50 - 1:100
	WB	1:1000
Application Note	* The dilutions indicate recommended starting dilutions and the optimal dilutions or concentrations should be determined by the scientist.	
Positive Control	Human heart	
Observed Size	70 kDa	

### Properties

Form	Liquid
Purification	Purification with Protein A and immunogen peptide.
Buffer	PBS and 0.09% (W/V) Sodium azide.
Preservative	0.09% (W/V) Sodium azide
Storage instruction	For continuous use, store undiluted antibody at 2-8°C for up to a week. For long-term storage, aliquot and store at -20°C or below. Storage in frost free freezers is not recommended. Avoid repeated freeze/thaw cycles. Suggest spin the vial prior to opening. The antibody solution should be gently mixed before use.

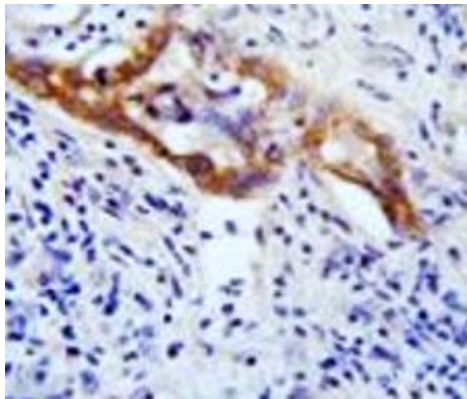
Note

For laboratory research only, not for drug, diagnostic or other use.

Bioinformation

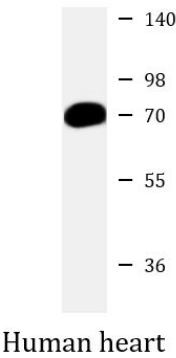
Gene Symbol	CLPX
Gene Full Name	caseinolytic mitochondrial matrix peptidase chaperone subunit
Function	ATP-dependent specificity component of the Clp protease complex. Hydrolyzes ATP. Targets specific substrates for degradation by the Clp complex. Can perform chaperone functions in the absence of CLPP. Enhances the DNA-binding activity of TFAM and is required for maintaining a normal mitochondrial nucleoid structure. [UniProt]
Calculated Mw	69 kDa
Cellular Localization	Mitochondrion. Mitochondrion matrix, mitochondrion nucleoid. [UniProt]

Images



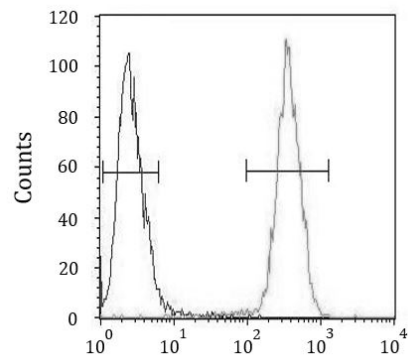
ARG59262 anti-CLPX antibody IHC-P image

Immunohistochemistry: Formalin-fixed and paraffin-embedded Human hepatocarcinoma stained with ARG59262 anti-CLPX antibody.



ARG59262 anti-CLPX antibody WB image

Western blot: 35 µg of Human heart lysate stained with ARG59262 anti-CLPX antibody at 1:1000 dilution.



#### ARG59262 anti-CLPX antibody FACS image

Flow Cytometry: 293 cells stained with ARG59262 anti-CLPX antibody (right histogram) or without primary antibody as control (left histogram), followed by incubation with FITC labelled secondary antibody.