

## ARG59282 anti-Loricrin antibody

Package: 100 µl  
Store at: -20°C

### Summary

Product Description	Rabbit Polyclonal antibody recognizes Loricrin
Tested Reactivity	Hu
Tested Application	IHC-P, WB
Host	Rabbit
Clonality	Polyclonal
Isotype	IgG
Target Name	Loricrin
Species	Human
Immunogen	Synthetic peptide derived from Human Loricrin.
Conjugation	Un-conjugated
Alternate Names	Loricrin

### Application Instructions

Application table	Application	Dilution
	IHC-P	1:50 - 1:200
	WB	1:1000 - 1:5000
Application Note	* The dilutions indicate recommended starting dilutions and the optimal dilutions or concentrations should be determined by the scientist.	
Observed Size	~ 35 kDa	

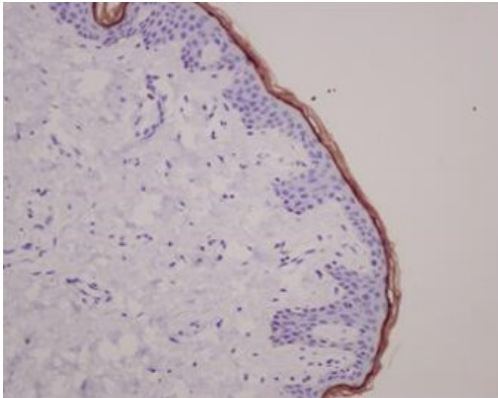
### Properties

Form	Liquid
Purification	Affinity purified.
Buffer	PBS (pH 7.4), 150mM NaCl, 0.02% Sodium azide and 50% Glycerol.
Preservative	0.02% Sodium azide
Stabilizer	50% Glycerol
Storage instruction	For continuous use, store undiluted antibody at 2-8°C for up to a week. For long-term storage, aliquot and store at -20°C. Storage in frost free freezers is not recommended. Avoid repeated freeze/thaw cycles. Suggest spin the vial prior to opening. The antibody solution should be gently mixed before use.
Note	For laboratory research only, not for drug, diagnostic or other use.

Bioinformation

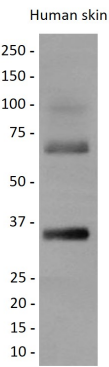
Gene Symbol	LOR
Gene Full Name	loricrin
Background	This gene encodes loricrin, a major protein component of the cornified cell envelope found in terminally differentiated epidermal cells. Mutations in this gene are associated with Vohwinkel's syndrome and progressive symmetric erythrokeratoderma, both inherited skin diseases. [provided by RefSeq, Jul 2008]
Function	Major keratinocyte cell envelope protein. [UniProt]
Calculated Mw	26 kDa
PTM	Substrate of transglutaminases. Some glutamines and lysines are cross-linked to other loricrin molecules and to SPRRs proteins.  Contains inter- or intramolecular disulfide-bonds. [UniProt]
Cellular Localization	Cytoplasm. Nucleus, nucleoplasm. [UniProt]

Images



ARG59282 anti-Loricrin antibody IHC-P image

Immunohistochemistry: Paraffin-embedded Human skin stained with ARG59282 anti-Loricrin antibody.



ARG59282 anti-Loricrin antibody WB image

Western blot: Human skin lysate stained with ARG59282 anti-Loricrin antibody.