

ARG59304 anti-CEP68 antibody

Package: 50 µg
Store at: -20°C

Summary

Product Description	Rabbit Polyclonal antibody recognizes CEP68
Tested Reactivity	Hu, Ms, Rat
Tested Application	WB
Host	Rabbit
Clonality	Polyclonal
Isotype	IgG
Target Name	CEP68
Species	Human
Immunogen	Synthetic peptide corresponding to a sequence of Human CEP68. (ELICWLYNVADVTDHGTAAARSNLTSKSSLQLYRQFKKDID)
Conjugation	Un-conjugated
Alternate Names	Cep68; Centrosomal protein of 68 kDa; KIAA0582

Application Instructions

Application table	Application	Dilution
	WB	0.1 - 0.5 µg/ml
Application Note	* The dilutions indicate recommended starting dilutions and the optimal dilutions or concentrations should be determined by the scientist.	

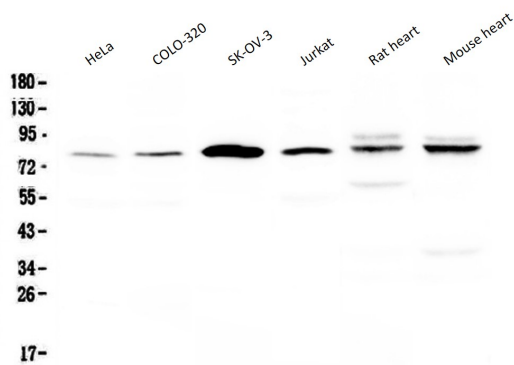
Properties

Form	Liquid
Purification	Affinity purification with immunogen.
Buffer	0.9% NaCl, 0.2% Na ₂ HPO ₄ , 0.05% Sodium azide and 4% Trehalose.
Preservative	0.05% Sodium azide
Stabilizer	4% Trehalose
Concentration	0.5 mg/ml
Storage instruction	For continuous use, store undiluted antibody at 2-8°C for up to a week. For long-term storage, aliquot and store at -20°C or below. Storage in frost free freezers is not recommended. Avoid repeated freeze/thaw cycles. Suggest spin the vial prior to opening. The antibody solution should be gently mixed before use.
Note	For laboratory research only, not for drug, diagnostic or other use.

Bioinformation

Gene Symbol	CEP68
Gene Full Name	centrosomal protein 68kDa
Calculated Mw	81 kDa
PTM	<p>Phosphorylation by PLK1 is required for binding to BTRC in prometaphase (PubMed:25503564). Phosphorylated directly or indirectly by NEK2 (PubMed:24554434). NEK2-mediated phosphorylation promotes CEP68 dissociation from the centrosome and its degradation at the onset of mitosis (PubMed:25704143).</p> <p>Ubiquitinated and targeted for proteasomal degradation in early mitosis by the SCF(BTRC) and/or SCF(FBXW11) E3 ubiquitin-protein ligase complexes (PubMed:25704143, PubMed:25503564). Degradation is complete by prometaphase and is required for removal of CDK5RAP2 from the peripheral pericentriolar material and subsequent centriole separation (PubMed:25503564). [UniProt]</p>
Cellular Localization	Cytoplasm, cytoskeleton, microtubule organizing center, centrosome. Note=Localizes to thin fibers protruding away from the proximal ends of the two centrioles. Dissociates from interphase centrosomes at the onset of mitosis. [UniProt]

Images



ARG59304 anti-CEP68 antibody WB image

Western blot: 50 µg of samples under reducing conditions. HeLa, COLO-320, SK-OV-3, Jurkat, Rat heart and Mouse heart lysates stained with ARG59304 anti-CEP68 antibody at 0.5 µg/ml, overnight at 4°C.