

ARG59311 anti-Smoothelin antibody

Package: 50 µg
Store at: -20°C

Summary

Product Description	Rabbit Polyclonal antibody recognizes Smoothelin
Tested Reactivity	Hu, Ms
Tested Application	ICC/IF, WB
Host	Rabbit
Clonality	Polyclonal
Isotype	IgG
Target Name	Smoothelin
Species	Human
Immunogen	Synthetic peptide corresponding to a sequence of Human Smoothelin. (QELEREEALASKRFRAERQDNKENWLHSQQREAEQR)
Conjugation	Un-conjugated
Alternate Names	SMSMO

Application Instructions

Application table	Application	Dilution
	ICC/IF	1:200 - 1:1000
	WB	0.1 - 0.5 µg/ml
Application Note	* The dilutions indicate recommended starting dilutions and the optimal dilutions or concentrations should be determined by the scientist.	

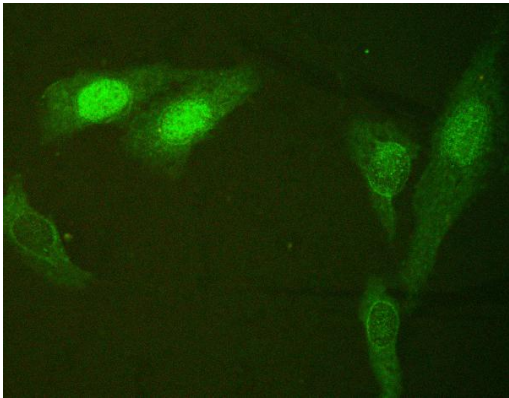
Properties

Form	Liquid
Purification	Affinity purification with immunogen.
Buffer	0.9% NaCl, 0.2% Na ₂ HPO ₄ , 0.05% Sodium azide and 4% Trehalose.
Preservative	0.05% Sodium azide
Stabilizer	4% Trehalose
Concentration	0.5 mg/ml
Storage instruction	For continuous use, store undiluted antibody at 2-8°C for up to a week. For long-term storage, aliquot and store at -20°C or below. Storage in frost free freezers is not recommended. Avoid repeated freeze/thaw cycles. Suggest spin the vial prior to opening. The antibody solution should be gently mixed before use.
Note	For laboratory research only, not for drug, diagnostic or other use.

Bioinformation

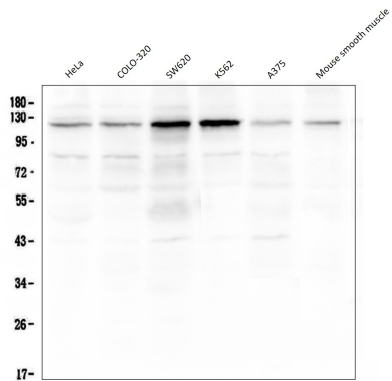
Gene Symbol	SMTN
Gene Full Name	smoothelin
Background	This gene encodes a structural protein that is found exclusively in contractile smooth muscle cells. It associates with stress fibers and constitutes part of the cytoskeleton. This gene is localized to chromosome 22q12.3, distal to the TUPLE1 locus and outside the DiGeorge syndrome deletion. Alternative splicing of this gene results in multiple transcript variants encoding distinct isoforms. [provided by RefSeq, May 2011]
Function	Structural protein of the cytoskeleton. [UniProt]
Calculated Mw	99 kDa
Cellular Localization	Cytoplasm, cytoskeleton. Note=Exhibits a filamentous organization. [UniProt]

Images



ARG59311 anti-Smoothelin antibody ICC/IF image

Immunofluorescence: U2OS cells were blocked with 10% goat serum and then stained with ARG59311 anti-Smoothelin antibody (green) at 2 µg/ml dilution, overnight at 4°C.



ARG59311 anti-Smoothelin antibody WB image

Western blot: 50 µg of samples under reducing conditions. HeLa, COLO-320, SW620, K562, A375 and Mouse smooth muscle lysates stained with ARG59311 anti-Smoothelin antibody at 0.5 µg/ml, overnight at 4°C.