

ARG59335 anti-KIF3A antibody

Package: 50 µg
Store at: -20°C

Summary

Product Description	Rabbit Polyclonal antibody recognizes KIF3A
Tested Reactivity	Hu, Ms, Rat
Tested Application	WB
Host	Rabbit
Clonality	Polyclonal
Isotype	IgG
Target Name	KIF3A
Species	Human
Immunogen	Recombinant protein corresponding to D485-Q699 of Human KIF3A.
Conjugation	Un-conjugated
Alternate Names	KLP-20; Kinesin-like protein KIF3A; FLA10; Microtubule plus end-directed kinesin motor 3A

Application Instructions

Application table	Application	Dilution
	WB	0.1 - 0.5 µg/ml
Application Note	* The dilutions indicate recommended starting dilutions and the optimal dilutions or concentrations should be determined by the scientist.	

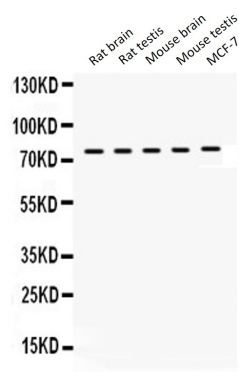
Properties

Form	Liquid
Purification	Affinity purification with immunogen.
Buffer	0.9% NaCl, 0.2% Na ₂ HPO ₄ , 0.05% Sodium azide and 5% BSA.
Preservative	0.05% Sodium azide
Stabilizer	5% BSA
Concentration	0.5 mg/ml
Storage instruction	For continuous use, store undiluted antibody at 2-8°C for up to a week. For long-term storage, aliquot and store at -20°C or below. Storage in frost free freezers is not recommended. Avoid repeated freeze/thaw cycles. Suggest spin the vial prior to opening. The antibody solution should be gently mixed before use.
Note	For laboratory research only, not for drug, diagnostic or other use.

Bioinformation

Gene Symbol	KIF3A
Gene Full Name	kinesin family member 3A
Function	Microtubule-based anterograde translocator for membranous organelles. Plus end-directed microtubule sliding activity in vitro. Plays a role in primary cilia formation (By similarity). [UniProt]
Calculated Mw	80 kDa
Cellular Localization	Cytoplasm, cytoskeleton. Cell projection, cilium. Cytoplasm, cytoskeleton, microtubule organizing center, centrosome, centriole. Note=Localizes to the subdistal appendage region of the centriole. [UniProt]

Images



ARG59335 anti-KIF3A antibody WB image

Western blot: 50 µg of Rat brain, 50 µg of Rat testis, 50 µg of Mouse brain, 50 µg of Mouse testis and 40 µg of MCF-7 whole cell lysates stained with ARG59335 anti-KIF3A antibody at 0.5 µg/ml dilution.